



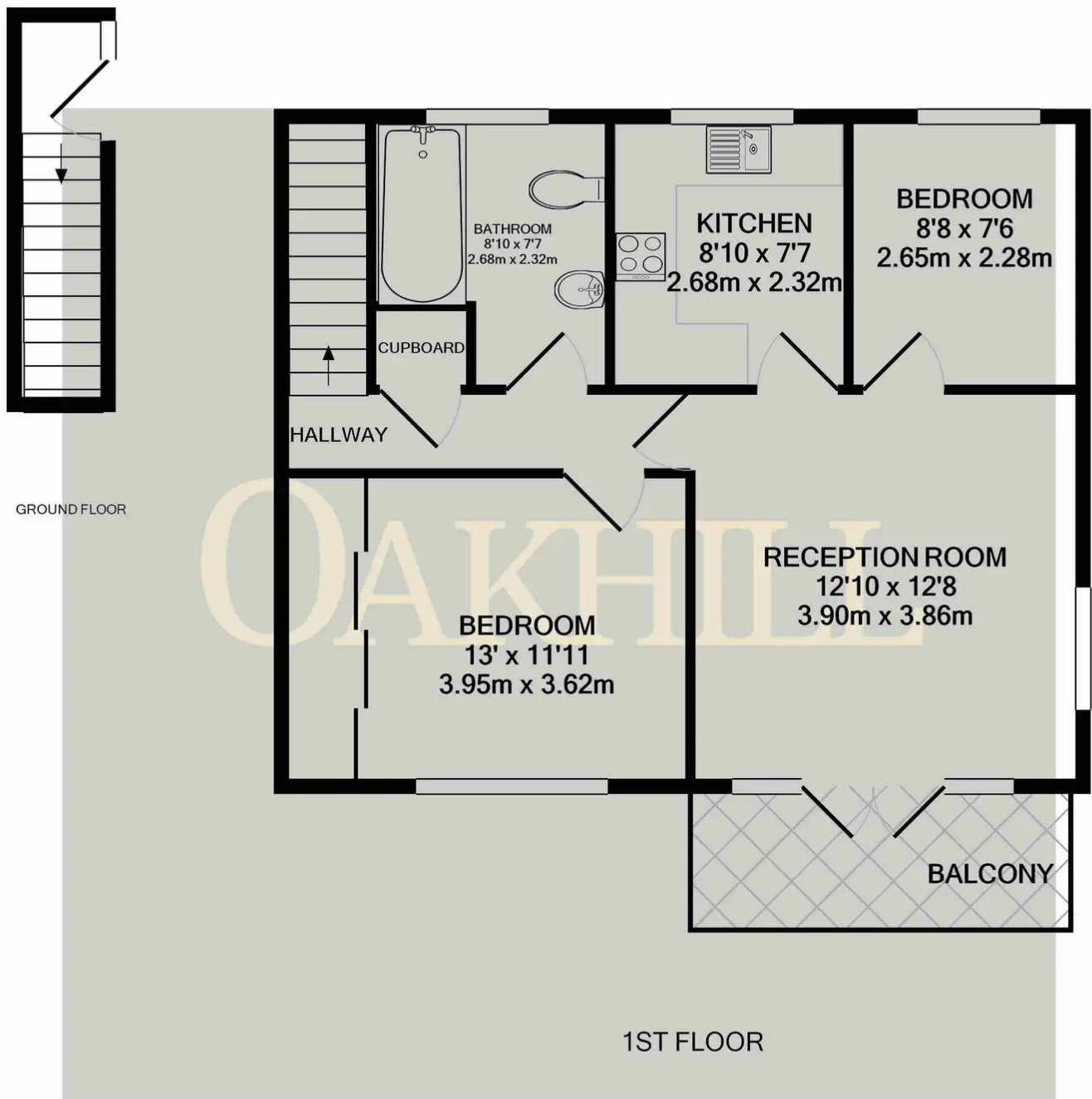
## Ravenswood Gardens, Isleworth – TW7 4JG

£350,000 Leasehold

Situated in a quiet cul-de-sac, within a short walk of Isleworth train station and local amenities, this delightful two bedroom, first floor maisonette is offered to the market with no forward chain. Benefiting from its own private entrance way, the property offers a master bedroom with built in wardrobes, a second double bedroom, modern family bathroom, kitchen and a spacious dual aspect reception room which leads onto a private balcony. Externally the property offers its own private rear garden. The property also benefits from gas central heating, double glazing and access to loft space.

OAKHILL





Whilst every attempt has been made to ensure the accuracy of the floor plan contained here, measurements of doors, windows, rooms and any other items are approximate and no responsibility is taken for any error, omission, or mis-statement. This plan is for illustrative purposes only and should be used as such by any prospective purchaser. The services, systems and appliances shown have not been tested and no guarantee as to their operability or efficiency can be given  
 Made with Metropix ©2024



Oakhill Estate Agents

6 South Street, Isleworth, TW7 7BG

