



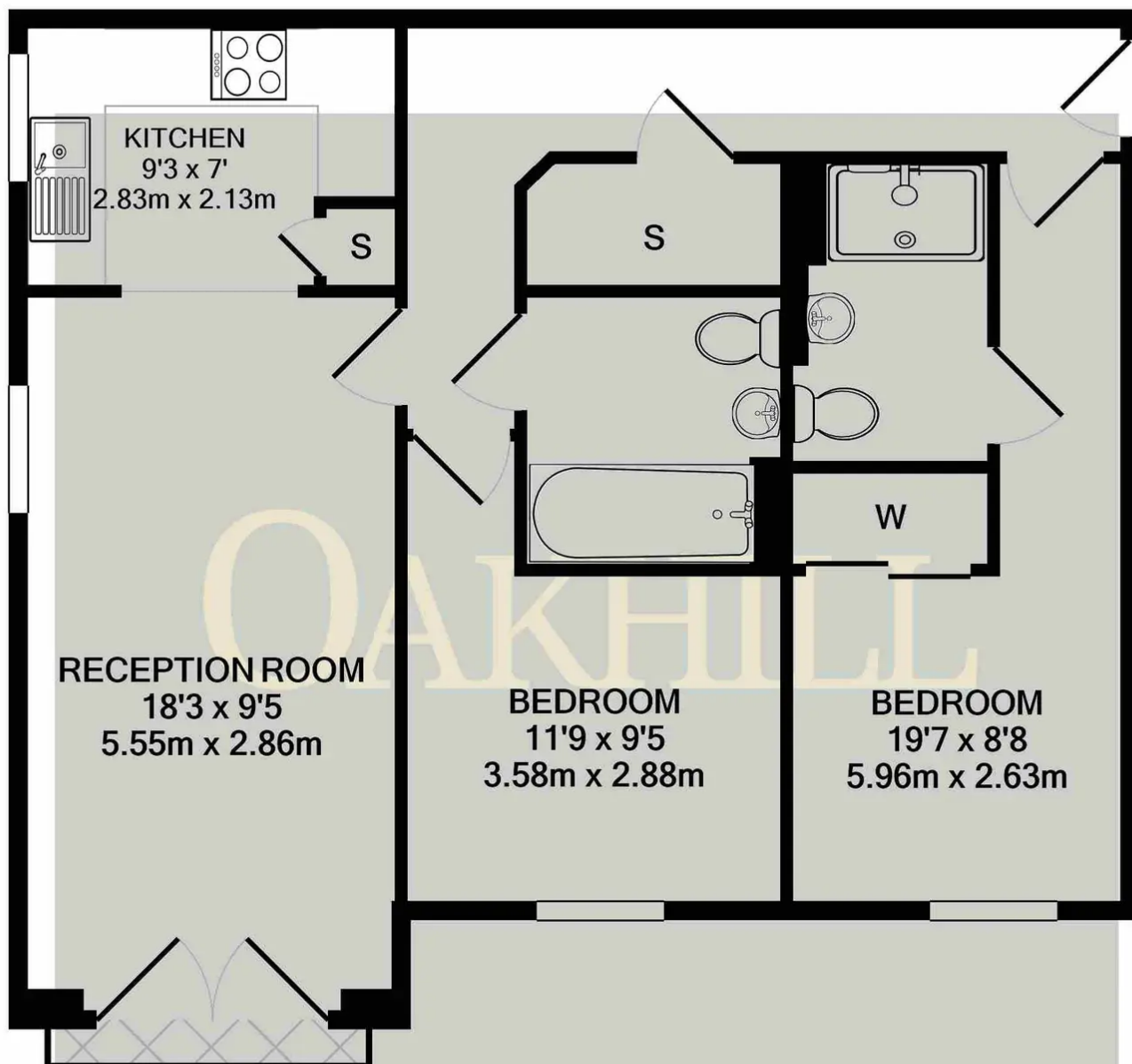
Worton Road – TW7 6DS

£300,000 Leasehold

This first floor two bedroom apartment is offered to the market with no forward chain. Situated in a modern development close to excellent transport links, local schools and amenities. The property offers a master bedroom with en-suite shower room, second double bedroom, modern family bathroom, good sized kitchen with built in appliances and spacious dual aspect reception room. The property also benefits from allocated, lift access and bike storage.

OAKHILL





Whilst every attempt has been made to ensure the accuracy of the floor plan contained here, measurements of doors, windows, rooms and any other items are approximate and no responsibility is taken for any error, omission, or mis-statement. This plan is for illustrative purposes only and should be used as such by any prospective purchaser. The services, systems and appliances shown have not been tested and no guarantee as to their operability or efficiency can be given

Made with Metropix ©2023



Oakhill Estate Agents

6 South Street, Isleworth, TW7 7BG

