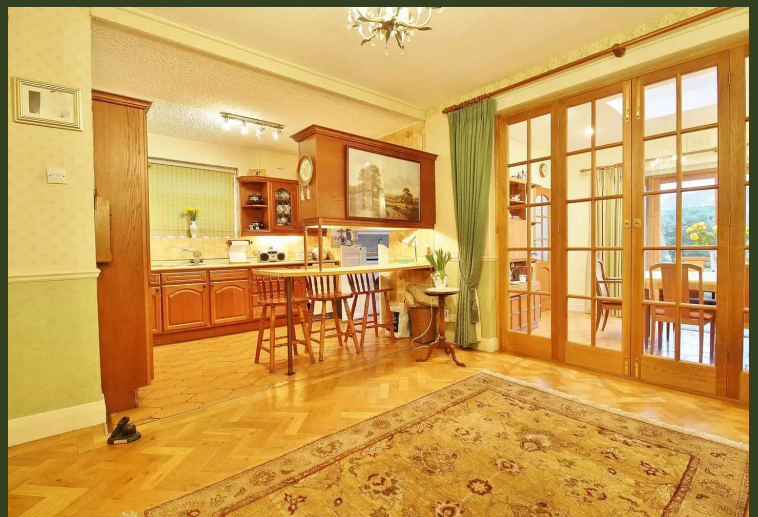


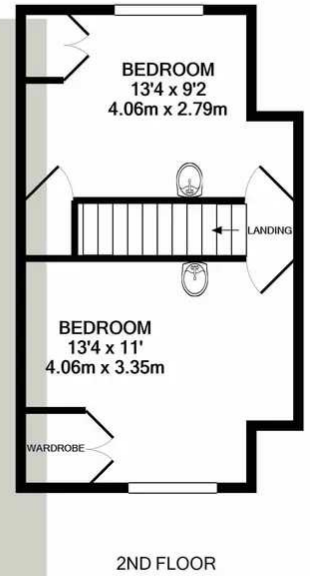
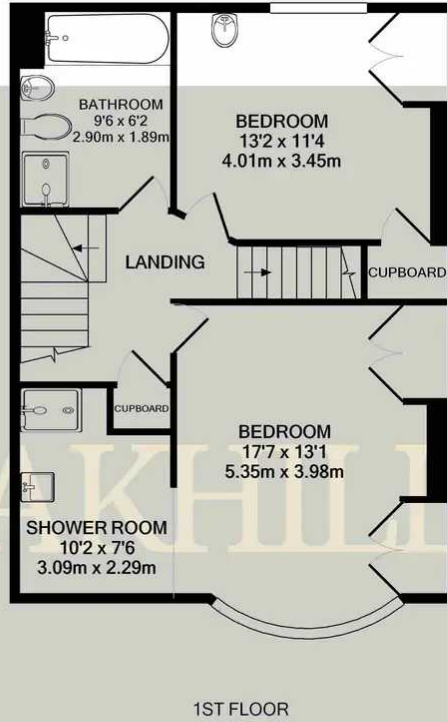
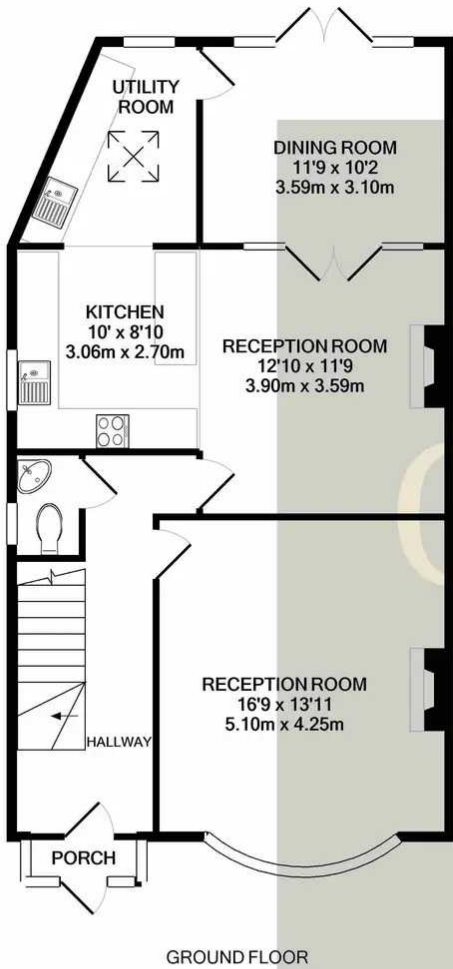


Bassett Gardens, Isleworth – TW7 4QY

£875,000 Freehold

Situated on a popular residential road, close to Osterley Underground station, Osterley Park, local schools, and amenities, this four bedroom, semi detached family home is offered to the market with no forward chain. The ground floor accommodation offers a welcoming hallway with downstairs wc, spacious front reception room with bay window and feature fireplace, second reception room with a fireplace, kitchen, utility room and a dining room with direct access to the private rear garden. The first floor features a large master bedroom with built in wardrobes and a en-suite shower room, second double bedroom with built in wardrobe and family bathroom. The loft has been converted to provide two further double bedrooms, both with built in wardrobes. Externally the property offers a good-sized rear garden with side access, separate garage, and a shared driveway. The property benefits from ample internal storage, gas central heating and double glazing throughout.





Whilst every attempt has been made to ensure the accuracy of the floor plan contained here, measurements of doors, windows, rooms and any other items are approximate and no responsibility is taken for any error, omission, or mis-statement. This plan is for illustrative purposes only and should be used as such by any prospective purchaser. The services, systems and appliances shown have not been tested and no guarantee as to their operability or efficiency can be given
Made with Metropix ©2024



Oakhill Estate Agents

6 South Street, Isleworth, TW7 7BG

