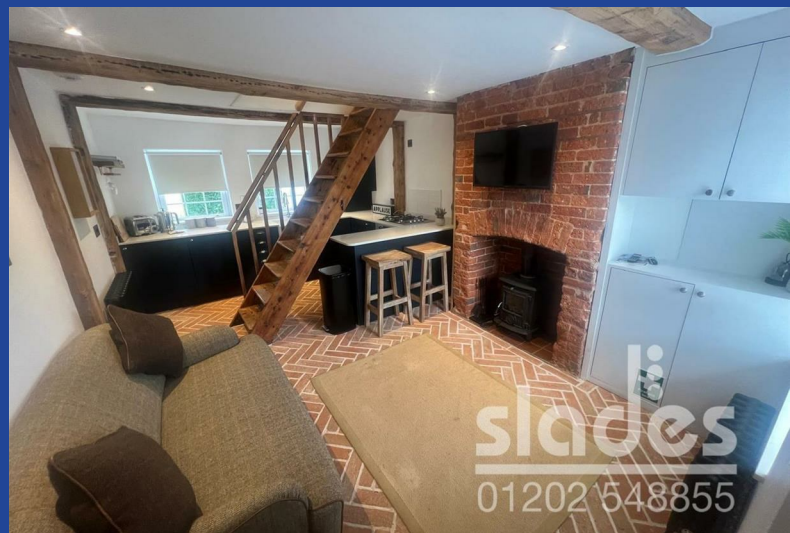




147 Christchurch Road

, Ringwood, BH24 3AH

Price Guide £209,950



Road Map



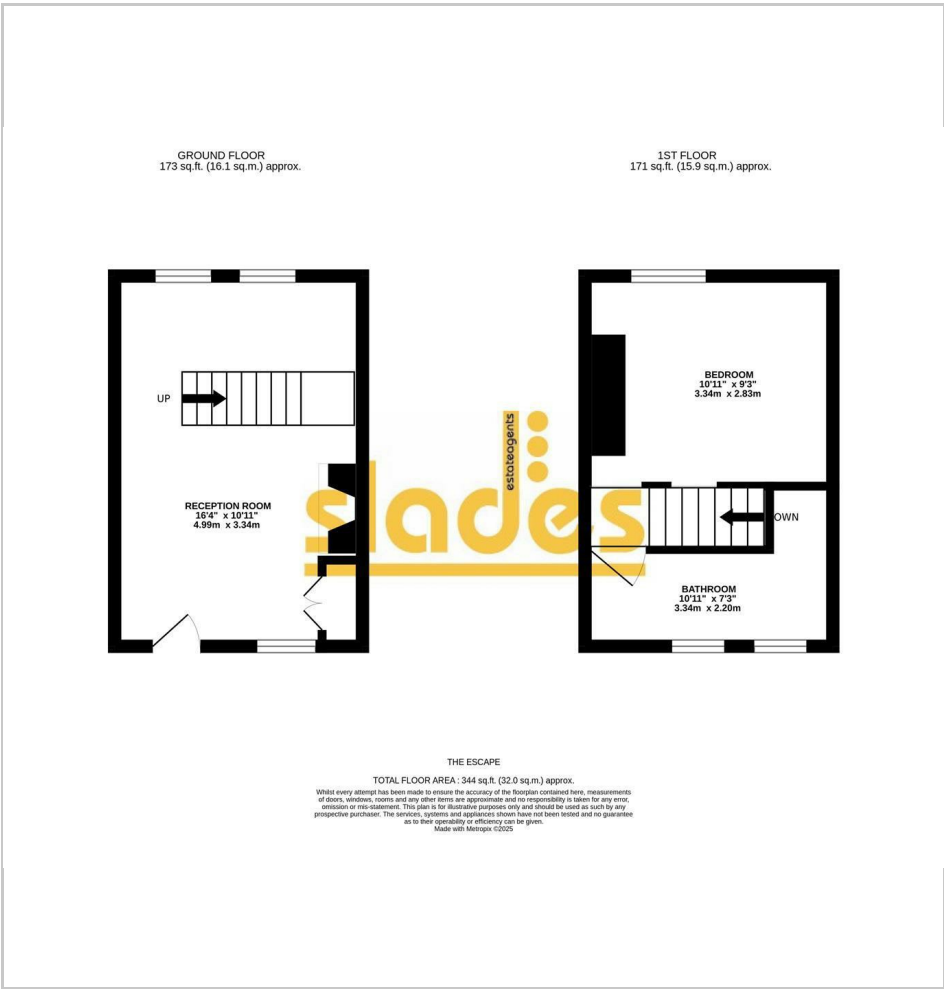
Hybrid Map



Terrain Map



Floor Plan



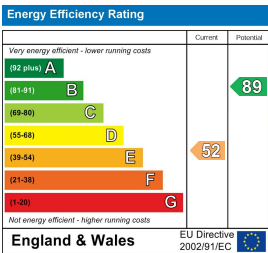
- Extensively Refurbished Character Mid Terraced House
- Stunning Open Plan Kitchen/Lounge with feature Log Burner
- uPVC Double Glazing & GFCH
- Spacious Double Bedroom
- Stylish Bathroom with Separate Shower
- Within a Level Walk to Ringwood Town Centre
- Ideal FTB or Investment/Air Bnb
- No Forward Chain

Viewing

Please contact our Slades Estate Agents Office on 01202548855 if you wish to arrange a viewing appointment for this property or require further information.



Energy Efficiency Graph



These particulars, whilst believed to be accurate are set out as a general outline only for guidance and do not constitute any part of an offer or contract. Intending purchasers should not rely on them as statements of representation of fact, but must satisfy themselves by inspection or otherwise as to their accuracy. No person in this firms employment has the authority to make or give any representation or warranty in respect of the property.

**** NO FORWARD CHAIN ** A sympathetically refurbished 1 BEDROOM Victorian MID TERRACED HOUSE set within a level walk of Ringwood High Street.**



Nestled on the charming Christchurch Road in Ringwood, this delightful Victorian terraced house 'The Escape' offers beautiful style and charm for those seeking a cosy and characterful home with feature oak beams and brick tiled floor and a 'Aga' Log burner to name a few. The property boasts a well-proportioned reception room, perfect for relaxation or entertaining guests. The double bedroom provides a tranquil retreat, ideal for restful nights.

The bathroom is conveniently located, ensuring ease of access and functionality offering a Burlington roll top, freestanding bath and a separate shower unit. This property is perfect for first-time buyers, couples, or those looking to downsize, offering a blend of historical charm and modern living.

The surrounding area boasts a vibrant community with local amenities, parks, and excellent transport links, making it an ideal location for both work and leisure. With its Victorian architecture and inviting atmosphere, this terraced house is a wonderful opportunity to embrace the character of Ringwood living. Don't miss the chance to make this charming property your new home.



