

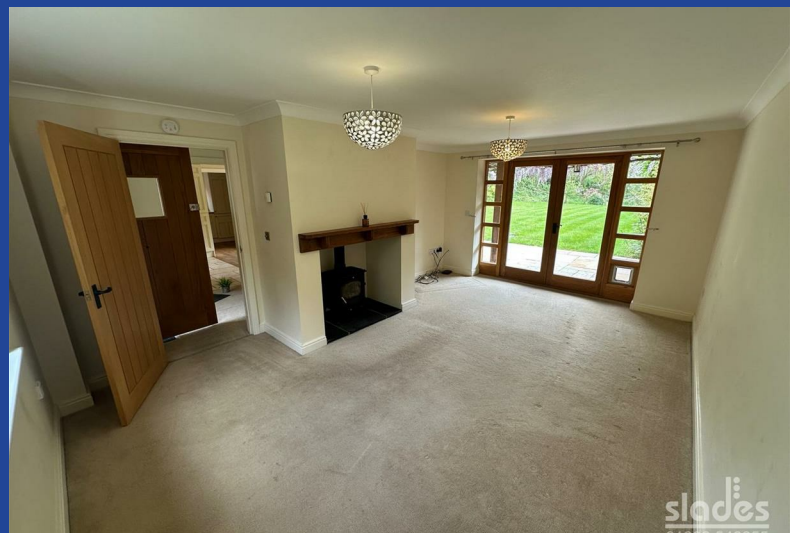


Poole Road

Lytchett Matravers, Poole, BH16 6AG

£2,100 PCM

3 2 2 C



Road Map



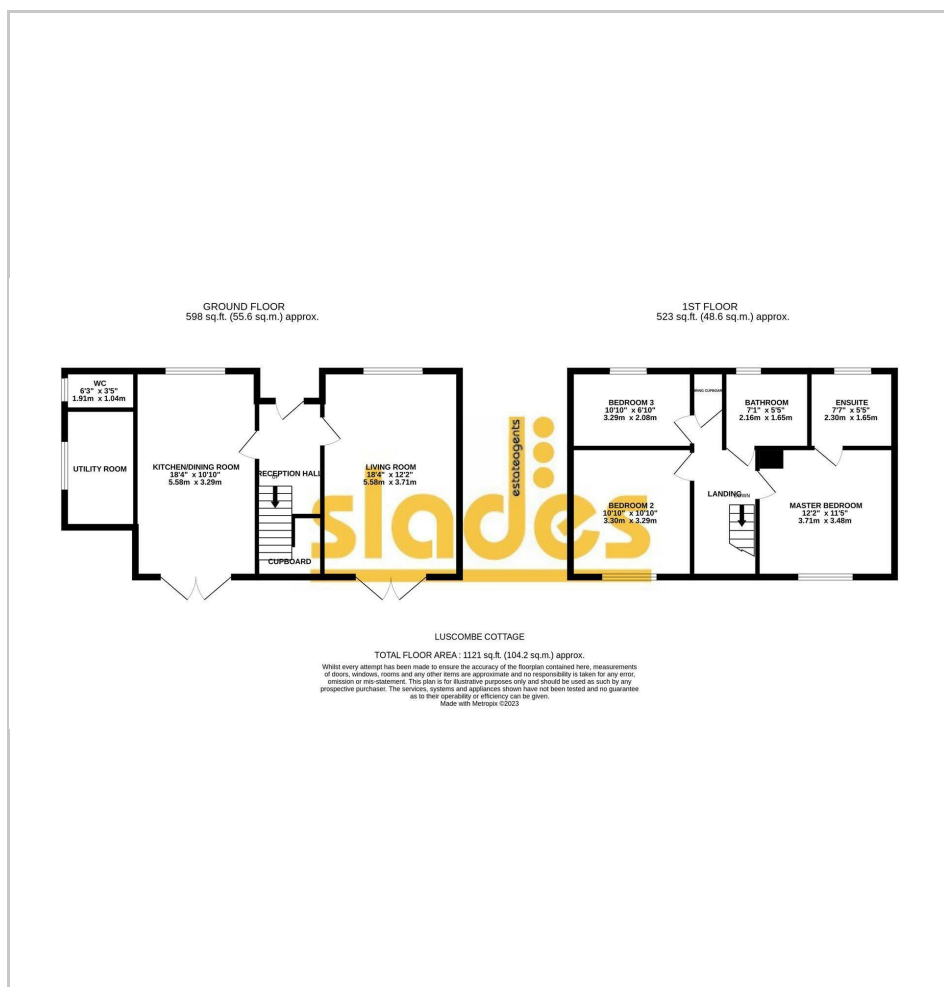
Hybrid Map



Terrain Map



Floor Plan



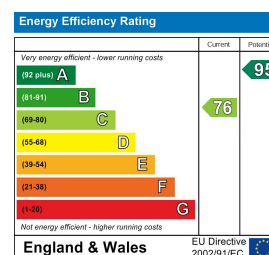
- Rural Location
- Gated Development of only 2 properties
- 3 bedroom
- 2 reception rooms
- Kitchen
- Utility Room
- Garage
- Large Garden (tenant needs to be a keen gardener)
- AVAILABLE MAY 2025

Viewing

Please contact our Slades Estate Agents Office on 01202548855 if you wish to arrange a viewing appointment for this property or require further information.



Energy Efficiency Graph



These particulars, whilst believed to be accurate are set out as a general outline only for guidance and do not constitute any part of an offer or contract. Intending purchasers should not rely on them as statements of representation of fact, but must satisfy themselves by inspection or otherwise as to their accuracy. No person in this firm's employment has the authority to make or give any representation or warranty in respect of the property.

301 Wimborne Road, Bournemouth, BH9 2AA
Tel: 01202548855 Email: info@sladesproperty.co.uk <https://www.sladesproperty.co.uk>

**** VIEWINGS AVAILABLE ** A Unique 3 bedroom cottage set within gated wooded grounds offering well presented accommodation and large outdoor space. Available MAY 2025 for long term family let.**





