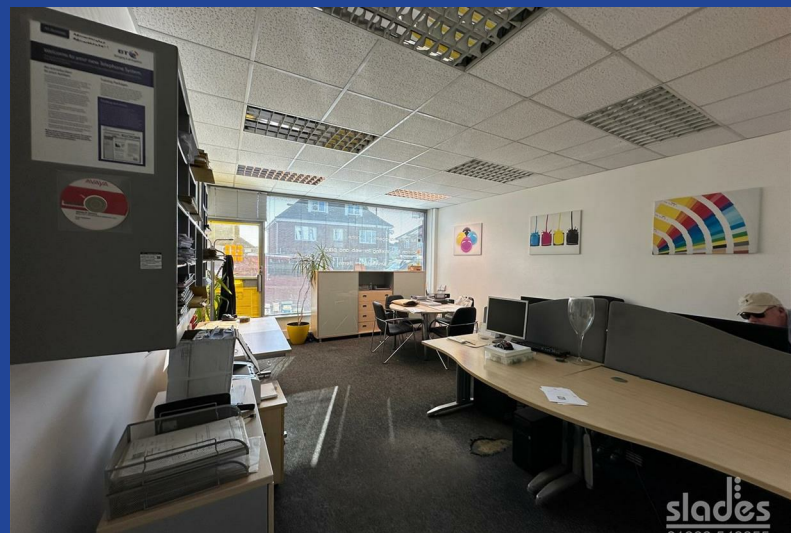
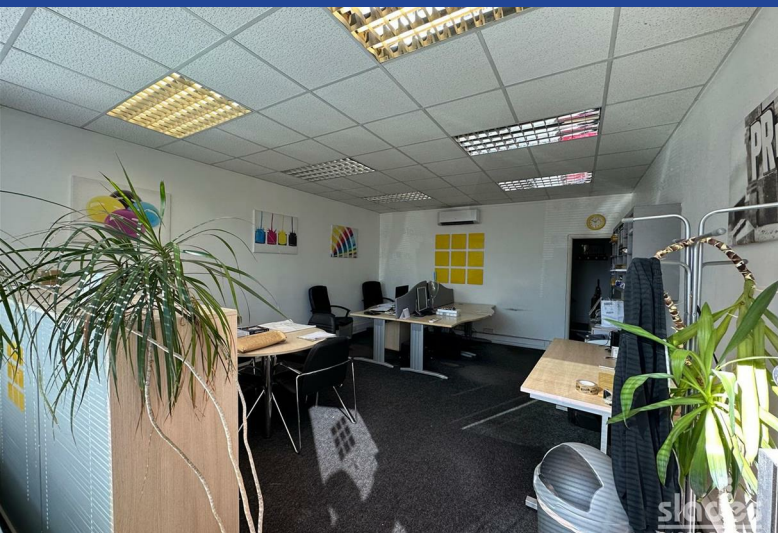




672 Wimborne Road

Winton, Bournemouth, BH9 2EG

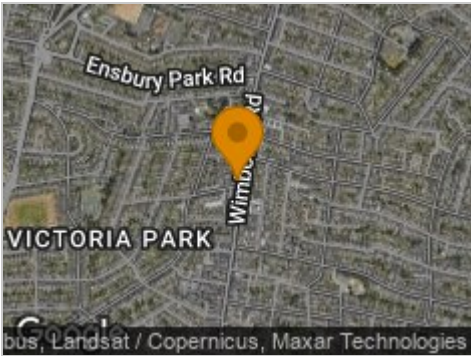
Offers In The Region Of £95,000



Road Map



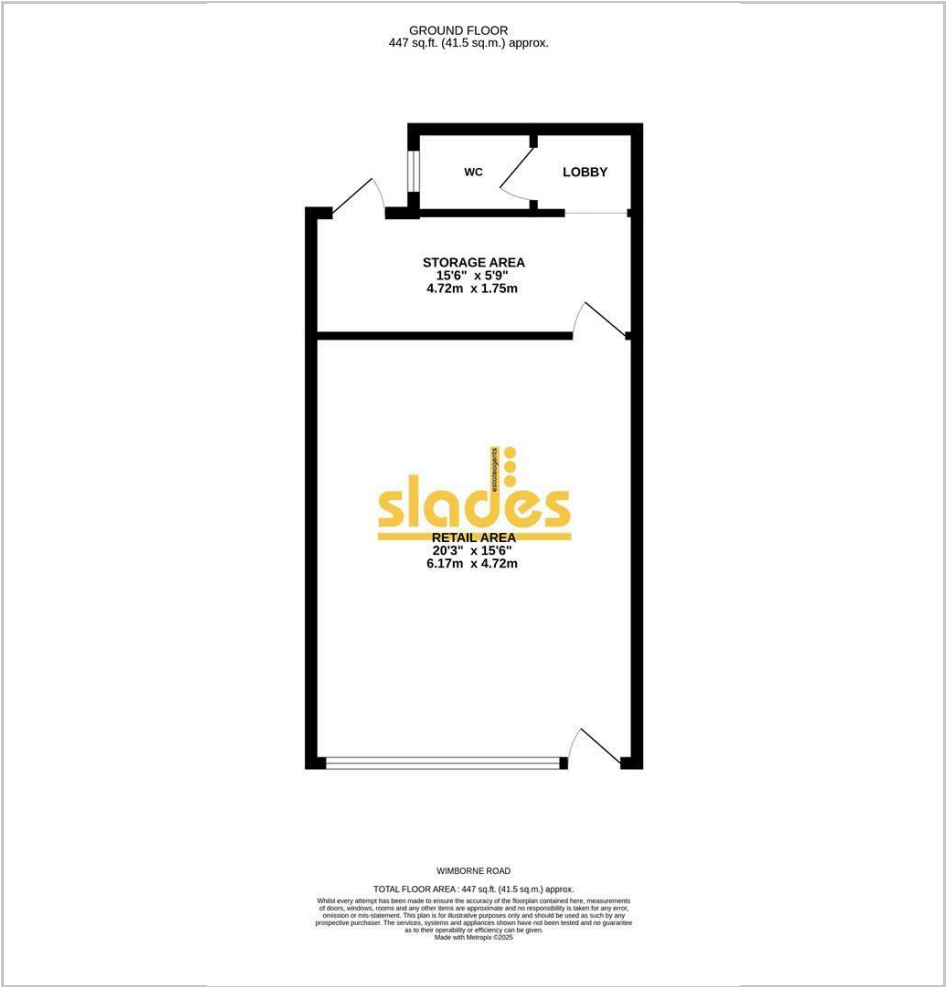
Hybrid Map



Terrain Map



Floor Plan



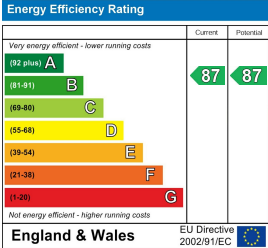
- Freehold Lock Up Shop Unit
Approx 450sqft
- Busy High Street Location
- Very Well Presented
- Modern Shop Front
- Rear Storage Area
- Internal WC
- Rear Access to Jameson Road
- Vacant Possession Offered

Viewing

Please contact our Slades Estate Agents Office on 01202548855 if you wish to arrange a viewing appointment for this property or require further information.



Energy Efficiency Graph



These particulars, whilst believed to be accurate are set out as a general outline only for guidance and do not constitute any part of an offer or contract. Intending purchasers should not rely on them as statements of representation of fact, but must satisfy themselves by inspection or otherwise as to their accuracy. No person in this firms employment has the authority to make or give any representation or warranty in respect of the property.

A very well presented FREEHOLD 'lock up' retail shop unit in this busy high street location now offered for sale with vacant possession. Ideal for own use or perfect investment opportunity.

