



16a Denmark Road

Winton, Bournemouth, BH9 1PB

£1,100 Per Month



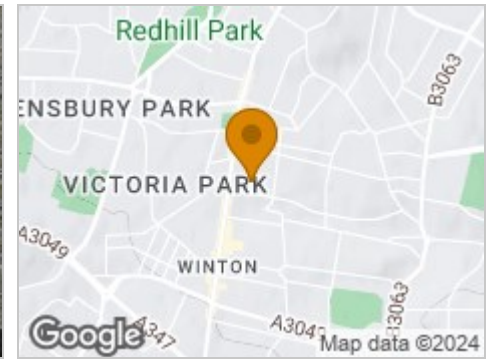
Road Map



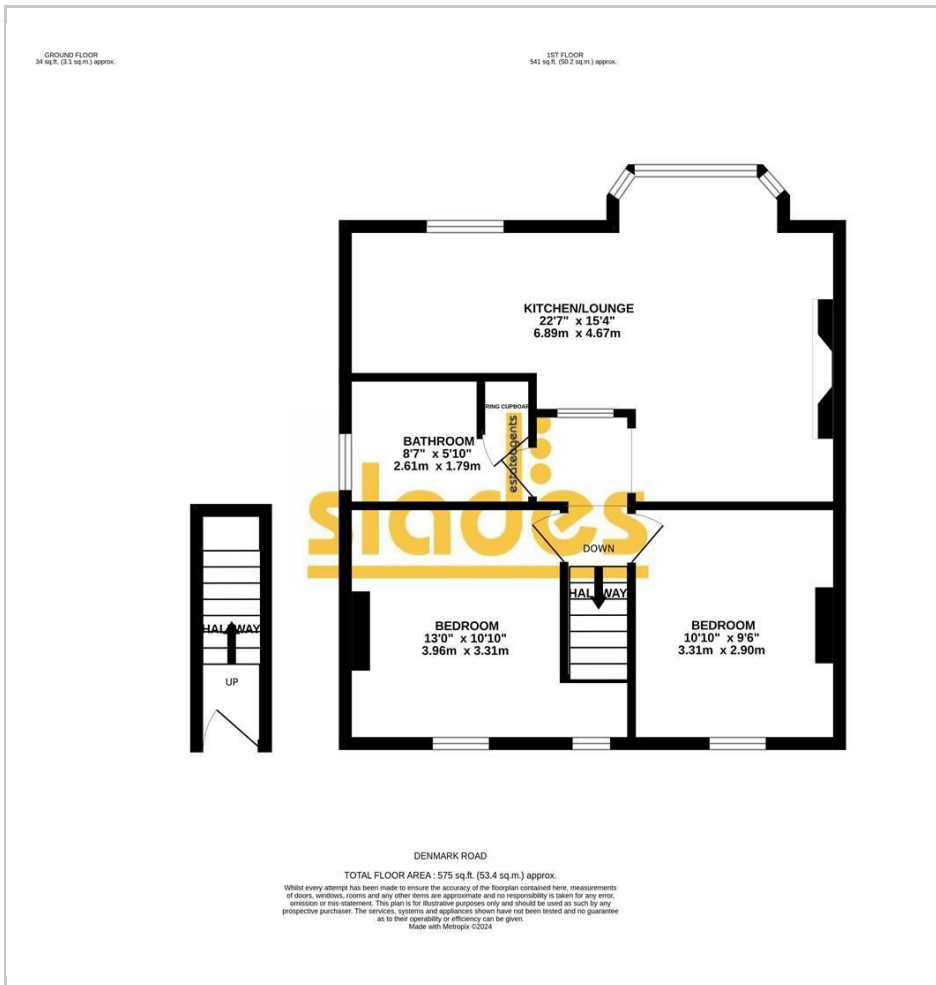
Hybrid Map



Terrain Map



Floor Plan



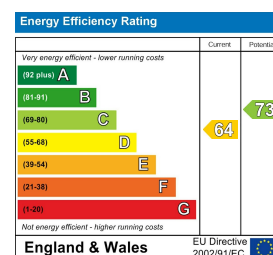
- PRIVATE ENTRANCE
- STAIRS TO FIRST FLOOR
- SPACIOUS OPEN PLAN LIVING ROOM & KITCHEN
- 2 DOUBLE BEDROOMS
- MODERN BATHROOM WITH SHOWER OVER BATH
- GAS CENTRAL HEATING
- OFF ROAD PARKING AVAILABLE EARLY AUGUST 2024
- UNFURNISHED

Viewing

Please contact our Slades Estate Agents Office on 01202548855 if you wish to arrange a viewing appointment for this property or require further information.



Energy Efficiency Graph



These particulars, whilst believed to be accurate are set out as a general outline only for guidance and do not constitute any part of an offer or contract. Intending purchasers should not rely on them as statements of representation of fact, but must satisfy themselves by inspection or otherwise as to their accuracy. No person in this firm's employment has the authority to make or give any representation or warranty in respect of the property.

301 Wimborne Road, Bournemouth, BH9 2AA
Tel: 01202548855 Email: info@sladesproperty.co.uk <https://www.sladesproperty.co.uk>

A recently modernised 2 DOUBLE BEDROOM first floor apartment with OFF ROAD PARKING located in central Winton. NOT SUITABLE FOR YOUNG CHILDREN DUE TO STEEP STAIRCASE



