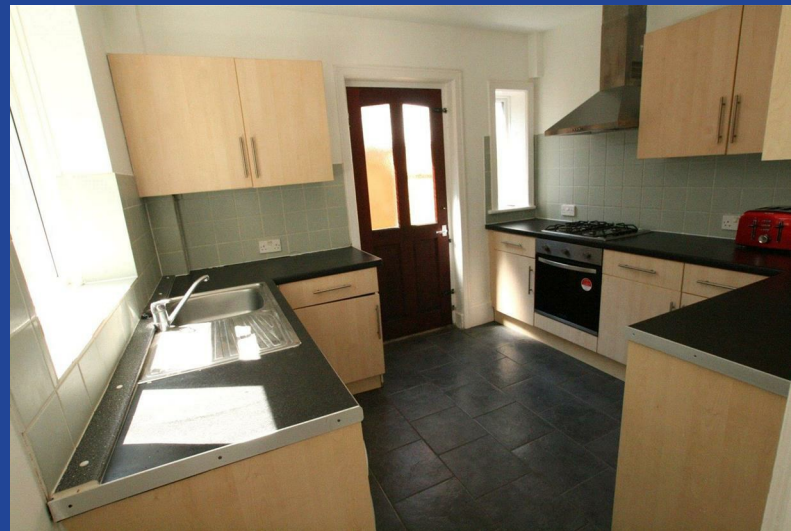




## 6a Rushton Crescent

Meyrick Park, Bournemouth, BH3 7AF

£2,200 PCM



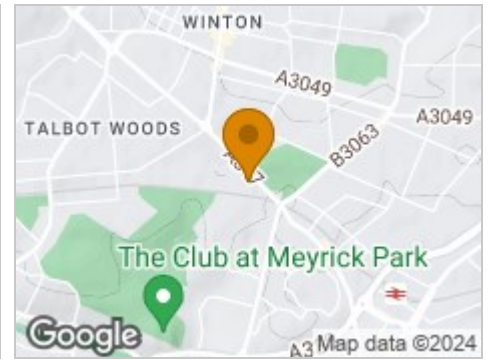
## Road Map



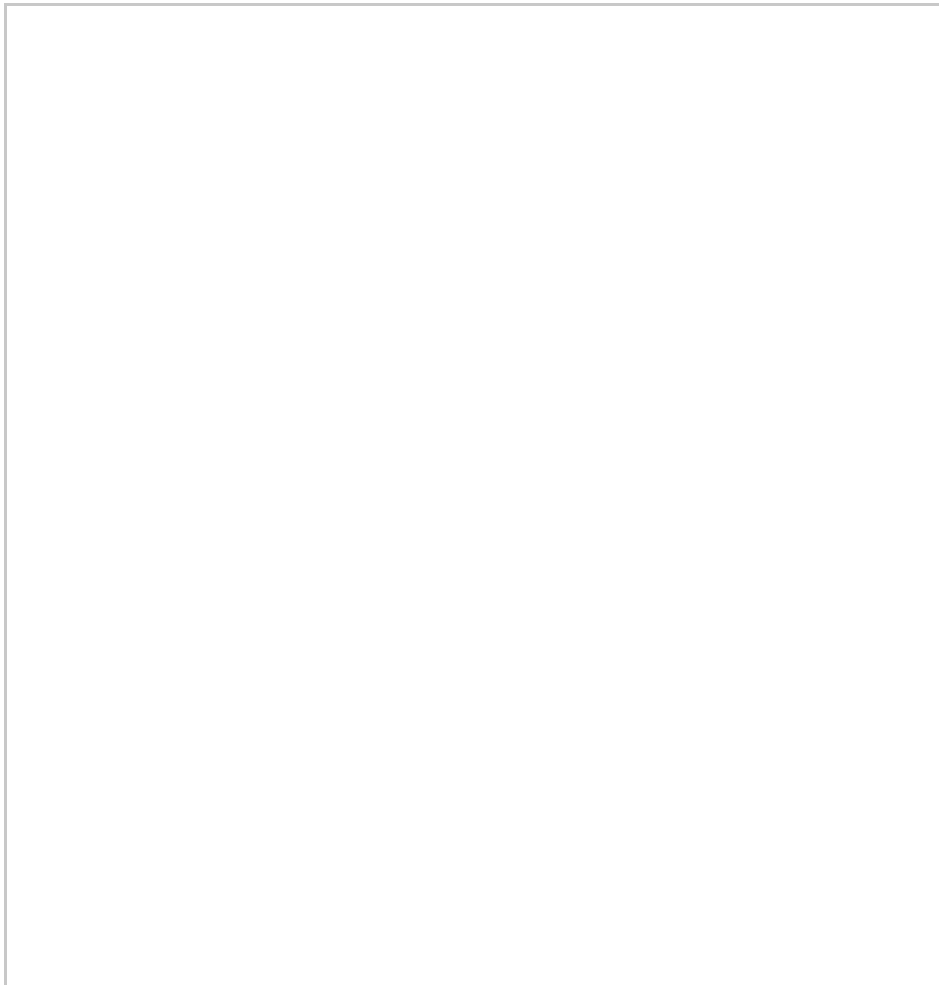
## Hybrid Map



## Terrain Map



## Floor Plan



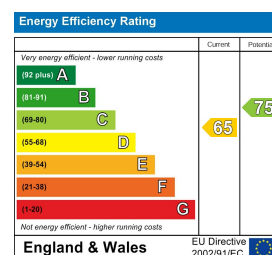
- Private Entrance
- Spacious Lounge
- Modern Kitchen
- Large Bathroom
- 3 or 4 Bedrooms
- Private Garden
- Part Furnished
- Ground Floor Flat
- Ideal For Families or Sharers
- Available 1st July 2023

## Viewing

Please contact our Slades Estate Agents Office on 01202548855 if you wish to arrange a viewing appointment for this property or require further information.



## Energy Efficiency Graph



These particulars, whilst believed to be accurate are set out as a general outline only for guidance and do not constitute any part of an offer or contract. Intending purchasers should not rely on them as statements of representation of fact, but must satisfy themselves by inspection or otherwise as to their accuracy. No person in this firm's employment has the authority to make or give any representation or warranty in respect of the property.

301 Wimborne Road, Bournemouth, BH9 2AA  
Tel: 01202548855 Email: [info@sladesproperty.co.uk](mailto:info@sladesproperty.co.uk) <https://www.sladesproperty.co.uk>

**\*\* PART FURNISHED \*\* A spacious and well presented 3 or 4 bedroom GROUND FLOOR apartment with PRIVATE GARDEN. Ideal for Families or Sharers. Available July 2024**



