






hanham hall

House Types

-  The Tundra
One bedroom coach house
-  The Stratus and The Cumulus
One and two bedroom apartments
-  The Antila and The Carina
One and two bedroom apartment
-  The Storm
Two bedroom coach house
-  The Nimbus
Two bedroom cottage
-  The Temperat
Three bedroom cottage
-  The Panama
Four bedroom cottage
-  The Cirrus
Four bedroom townhouse
-  The Savannah
Five Bedroom townhouse
-  Affordable Housing
Inc plots 76, 77, 78, 79, 80,
81, 147, 148, 149, 150, 151, 152

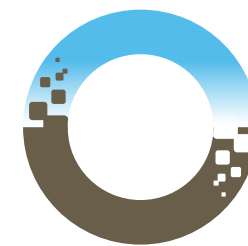




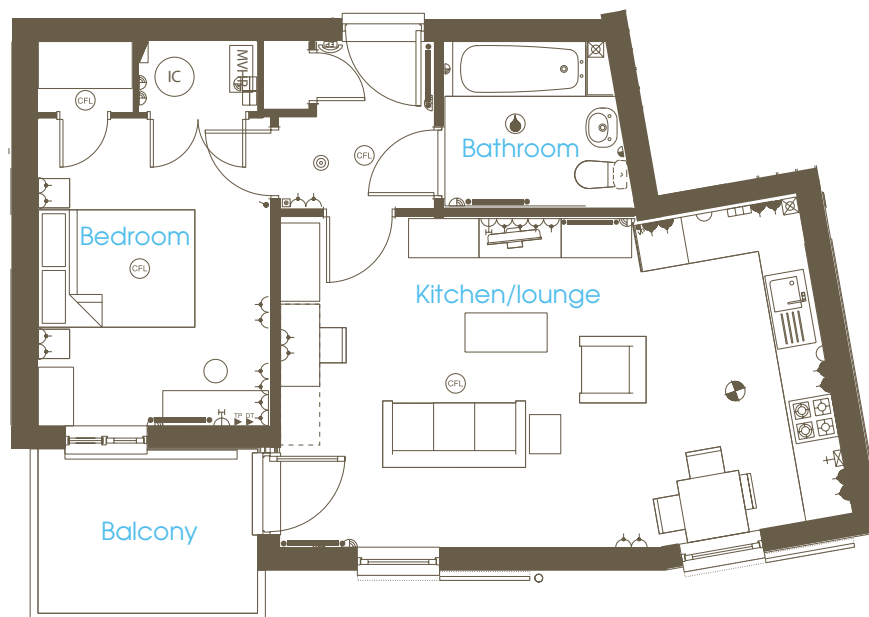
The Antila

1 Bedroom Apartment

- Open plan kitchen/lounge
- Access to balcony from lounge
- Secure telephone entry system



hanham hall



| | |
|----------------|---------------------------------------|
| Bedroom | 3995 x 3152mm 13' 1" x 10' 4" |
| Kitchen/Lounge | 4288(max) x 7928mm 14' 1" x 26' 1" |
| Bathroom | 2208 x 2877mm(max) 7' 3" x 9' 5" |

Approximate dimensions

KEY

| | | | | | | | |
|-----|---|---|---|------|---|---|-------------------------------|
| CFL | Pendant lamp fitting | ▼ | Switched socket above worktop / cabinet | ⌋ | Socket Outlet Switched From ACP | ⌋ | Gas point |
| ⊕ | Batten lamp fitting | ⌋ | Double switched socket above worktop | ⌋ | Shower point | ⌋ | Extractor fan |
| ⊕ | Splashproof IPX4 lamp fitting | ⌋ | Cooker Control Unit | ⌋ | T.V. aerial socket compatible with Sky* | ⌋ | Consumer Unit |
| ⌋ | Switched socket outlet installed at 450mm above PFL | ⌋ | Radiator | TP ▶ | Internal telephone point | ⌋ | Appliance Control Panel (ACP) |
| ⌋ | Double switched socket outlet installed at 450mm | ⌋ | Cylinder | DP ▶ | Data point | ⌋ | Boiler |
| | | ⌋ | Telephone entry point | ⌋ | Smoke detector | ⌋ | Heat Recovery Ventilation |
| | | | | | | ⌋ | Immersion Cylinder |

NOTE: Dimensions should not be used for carpet sizes, appliance spaces or items of furniture. Purchasers' furniture may be of a different size to that indicated. **IMPORTANT NOTICE:** These particulars are for illustration only. We operate a policy of a continuous product development and individual features such as windows, garages and elevational treatments may vary from time to time as may heating and electrical layouts. Consequently these particulars should be treated as general guidance only and cannot be relied upon as accurately describing any of the specified matters prescribed by any order made under the property misdescriptions act 1991. Nor do they constitute a contract, part of a contract or a warranty.

www.barratthomes.co.uk

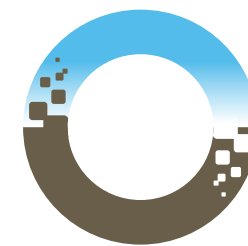




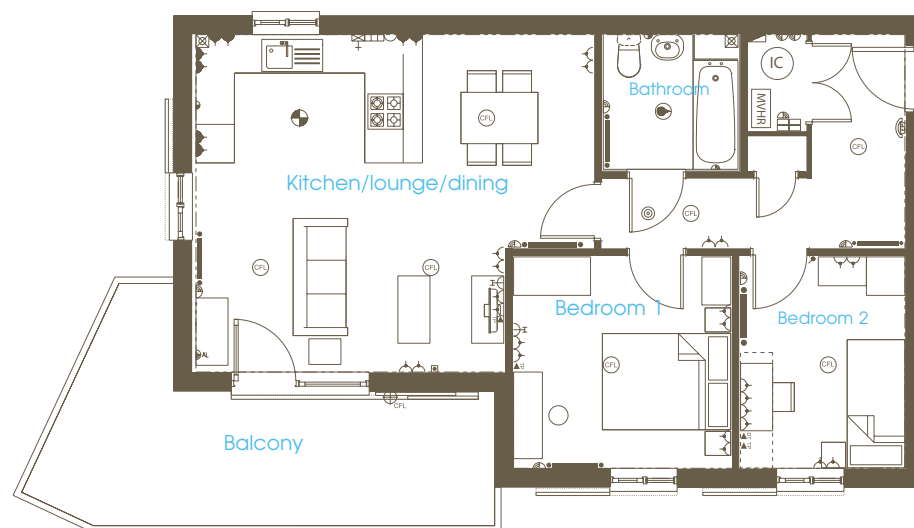
The Carina

2 Bedroom Apartment

- Spacious open plan kitchen/lounge with dining area
- Access to balcony from lounge
- Secure telephone entry system



hanham hall



| | |
|-----------------------|--|
| Bedroom 1 | 3394 x 3458mm 11' 2" x 11' 4" |
| Bedroom 2 | 3394 x 2615mm 11' 2" x 8' 7" |
| Kitchen/lounge/dining | 5385(max) x 6331mm(max) 17' 8" x 20' 9" |
| Bathroom | 2271 x 2191mm 7' 5" x 7' 2" |

Approximate dimensions

KEY

| | | | | | | | |
|-----|---|---|---|------|---|---|-------------------------------|
| CFL | Pendant lamp fitting | ▼ | Switched socket above worktop / cabinet | ⌋ | Socket Outlet Switched From ACP | ⬆ | Gas point |
| ⊕ | Batten lamp fitting | ⚡ | Double switched socket above worktop | ⌋ | Shower point | ⌋ | Extractor fan |
| ⊕ | Splashproof IPX4 lamp fitting | ⚡ | Cooker Control Unit | ⌋ | T.V. aerial socket compatible with Sky* | ⌋ | Consumer Unit |
| ⊕ | Switched socket outlet installed at 450mm above PFL | ⚡ | Radiator | TP ▶ | Internal telephone point | ⌋ | Appliance Control Panel (ACP) |
| ⊕ | Double switched socket outlet installed at 450mm | ⚡ | Cylinder | DP ▶ | Data point | ⌋ | Boiler |
| | | ⚡ | Telephone entry point | ⊙ | Smoke detector | ⌋ | Heat Recovery Ventilation |
| | | | | | | ⌋ | Immersion Cylinder |

NOTE: Dimensions should not be used for carpet sizes, appliance spaces or items of furniture. Purchasers' furniture may be of a different size to that indicated. **IMPORTANT NOTICE:** These particulars are for illustration only. We operate a policy of a continuous product development and individual features such as windows, garages and elevational treatments may vary from time to time as may heating and electrical layouts. Consequently these particulars should be treated as general guidance only and cannot be relied upon as accurately describing any of the specified matters prescribed by any order made under the property misdescriptions act 1991. Nor do they constitute a contract, part of a contract or a warranty.

www.barratthomes.co.uk

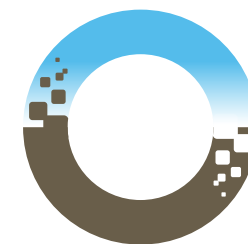




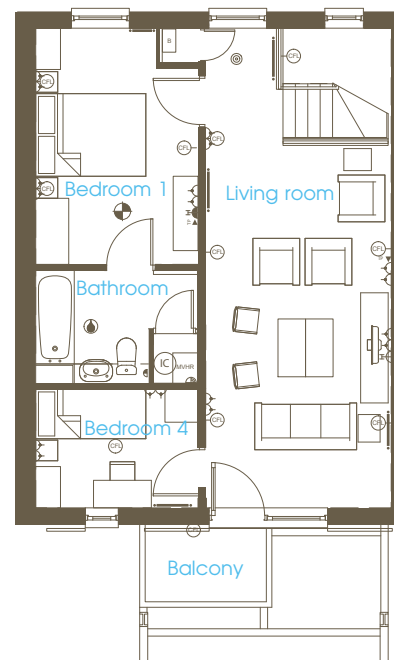
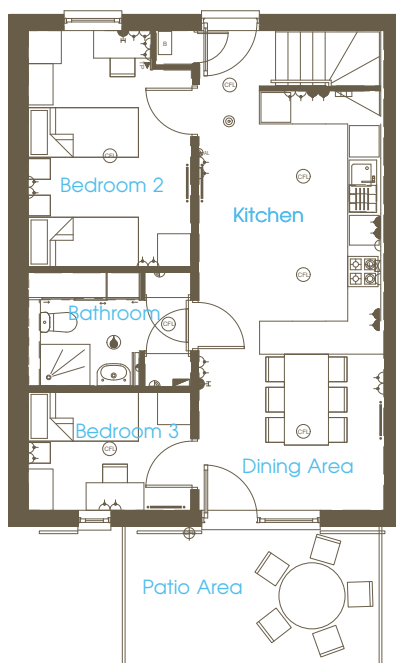
The Panama

4 Bedroom Cottage

- Large living area with access to balcony
- Spacious kitchen/diner with access to the back garden
- Family bathroom and separate shower room



hanham hall



Ground Floor

| | |
|----------------|---|
| Kitchen/Dining | 8835 (max) x 3445mm (max) (28'11" x 11'3") |
| Bedroom 2 | 4364 (max) x 3008mm (max) (14'3" x 9'10") |
| Bedroom 3 | 2230 x 3008mm (7'3" x 9'10") |
| WC | 1550 (max) x 3008mm (max) (5'1" x 9'10") |

Approximate dimensions

First Floor

| | |
|-----------|---|
| Living | 8835 (max) x 3445mm (max) (28'11" x 11'3") |
| Bedroom 1 | 4364 x 3008mm (14'3" x 9'10") |
| Bedroom 4 | 2230 x 3008mm (7'3" x 9'10") |
| Bathroom | 2111 (max) x 3008mm (max) (6'11" x 9'10") |

Approximate dimensions

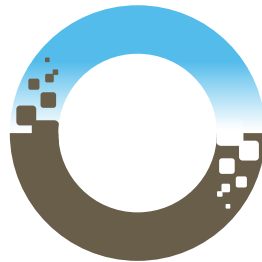
KEY

| | | | | | | | |
|-----|--|---|--|---|--|---|-------------------------------|
| CFL | Pendant lamp fitting | ▼ | Switched socket above worktop / cabinet | ⌋ | Socket Outlet Switched From ACP | ⌋ | Gas point |
| ⊕ | Batten lamp fitting | ⌋ | Double switched socket above worktop | ⌋ | Shower point | ⌋ | Extractor fan |
| ⊕ | Splashproof IPX4 lamp fitting | ⌋ | Cooker Control Unit | ⌋ | TV aerial socket compatible with Sky+ | ⌋ | Consumer Unit |
| ⌋ | Switched socket outlet installed at 450mm above PFL | ⌋ | Radiator | ⌋ | Internal telephone point | ⌋ | Appliance Control Panel (ACP) |
| ⌋ | Double switched socket outlet installed at 450mm | ⌋ | Cylinder | ⌋ | Data point | ⌋ | Boiler |
| | | ⌋ | Telephone entry point | ⌋ | Smoke detector | ⌋ | Heat Recovery Ventilation |
| | | | | ⌋ | | ⌋ | Immersion Cylinder |

NOTE: Dimensions should not be used for carpet sizes, appliance spaces or items of furniture. Purchasers' furniture may be of a different size to that indicated. **IMPORTANT NOTICE:** These particulars are for illustration only. We operate a policy of a continuous product development and individual features such as windows, garages and elevational treatments may vary from time to time as may heating and electrical layouts. Consequently these particulars should be treated as general guidance only and cannot be relied upon as accurately describing any of the specified matters prescribed by any order made under the property misdescriptions act 1991. Nor do they constitute a contract, part of a contract or a warranty.

www.barratthomes.co.uk





hanham hall

Hanham Hall, Whittucks Road, Bristol, BS15 3HY
Tel: 0844 811 1855

www.barratthomes.co.uk/hanhamhall

