

L·D·B

SALES, LETTINGS
& MANAGEMENT



BROMPTON PARK CRESCENT, LONDON

NESTLED IN THE DESIRABLE BROMPTON PARK CRESCENT, THIS NEWLY REFURBISHED PROPERTY OFFERS A MODERN AND STYLISH LIVING EXPERIENCE IN THE HEART OF LONDON. THE RESIDENCE FEATURES TWO WELL-PROPORTIONED BEDROOMS AND TWO CONTEMPORARY BATHROOMS, MAKING IT IDEAL FOR PROFESSIONALS SEEKING COMFORT AND CONVENIENCE.

SITUATED WITHIN A SECURE GATED COMMUNITY, THIS PROPERTY NOT ONLY PROVIDES PEACE OF MIND BUT ALSO A SENSE OF EXCLUSIVITY. THE LOCATION IS PARTICULARLY ADVANTAGEOUS, WITH WEST BROMPTON STATION JUST A FIVE-MINUTE WALK AWAY, OFFERING EXCELLENT TRANSPORT LINKS TO THE REST OF LONDON.

ACCESS TO SWIMMING POOL & GYM WITHIN FACILITY.

DO NOT MISS THE CHANCE TO MAKE THIS CHARMING HOME YOUR OWN.

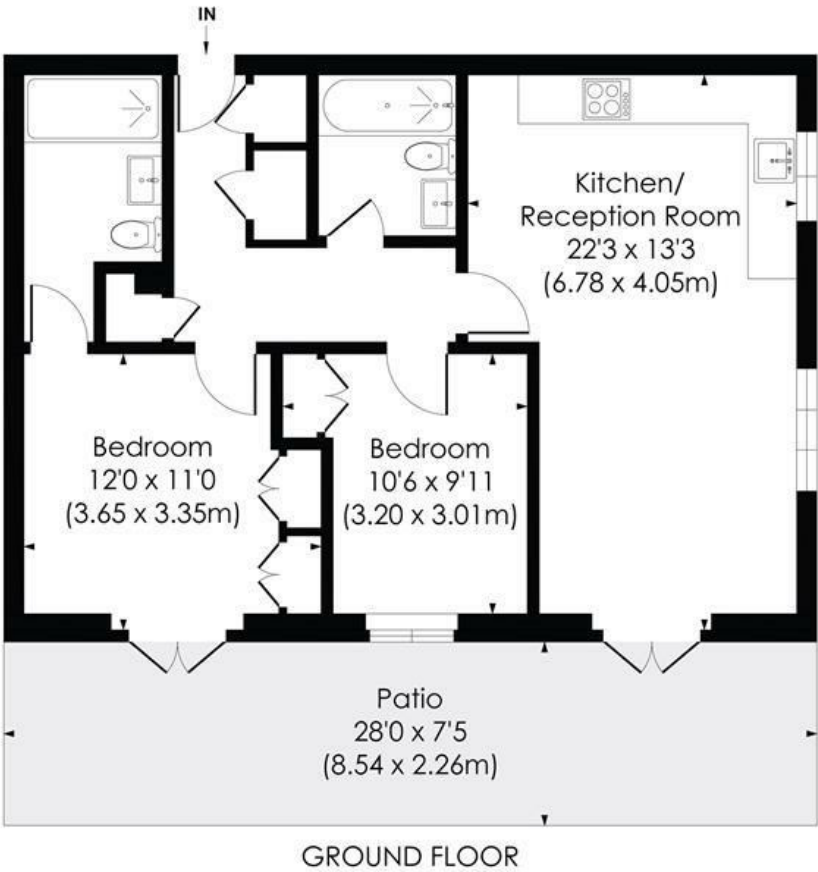
- NEWLY REFURBISHED
- GATED COMMUNITY
- WOOD FLOORS THROUGHOUT
- TWO BATHROOMS

£3,097 PER CALENDAR MONTH

BROMPTON PARK CRESCENT, SW6

Approx. Gross Internal Floor Area

689 Sq. ft/64.05 Sq. m



© Pixangle Property Marketing Ltd. info@pixangle.com Tel: 0208 870 2118

This floor plan has been prepared for the purpose of illustration only in accordance with the latest RICS code of measuring practice and is not to scale. All measurements and areas are approximate and whilst every effort has been made to ensure the accuracy of the plan contained here, no responsibility is taken for any error, omission or misstatement.

