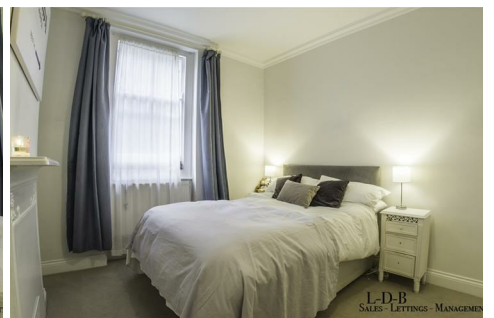


L·D·B

SALES, LETTINGS
& MANAGEMENT



14 COLEHILL GARDENS, FULHAM PALACE ROAD, LONDON, SW6

657

LDB ARE PROUD TO BRING TO THE MARKET THIS STUNNING PROPERTY TUCKED AWAY ON A QUIET SIDE STREET SITUATED OPPOSITE BISHOPS PARK. IT HAS BRIGHT AND AIRY LIVING SPACES AND HAS BEEN RECENTLY REFURBISHED TO A HIGH STANDARD THROUGHOUT. BEING CLOSE TO PUBLIC TRANSPORT WITH TWO LARGE DOUBLE BEDROOMS AND A SEPARATE LIVING AREA, THIS FLAT WILL NOT STAY AVAILABLE FOR LONG.

CALL ONE OF OUR TEAM MEMBERS TODAY TO ARRANGE A VIEWING

- FANTASTIC LOCATION
- TWO LARGE DOUBLE BEDROOMS
- BRIGHT & AIRY
- OPPOSITE BISHOPS PARK
- LARGE SEPARATE LOUNGE

£2,300 PCM

