

L·D·B

SALES, LETTINGS
& MANAGEMENT



TFF, 38 Woodstock Road, Chiswick, London, W4 1UF

SITUATED ON THE DESIRABLE WOODSTOCK ROAD IN CHISWICK, THIS SPLENDID TWO-BEDROOM FLAT OFFERS A PERFECT BLEND OF MODERN COMFORT AND CLASSIC CHARM. RECENTLY REDECORATED THROUGHOUT, THE PROPERTY BOASTS A FRESH AND INVITING ATMOSPHERE, MAKING IT AN IDEAL HOME FOR INDIVIDUALS OR PROFESSIONAL SHARERS SEEKING A STYLISH LIVING SPACE.

THE PROPERTY FEATURES A LARGE SEPARATE LIVING ROOM, PROVIDING AMPLE SPACE FOR RELAXATION AND ENTERTAINING GUESTS. THE ROOM IS FILLED WITH NATURAL LIGHT, CREATING A WARM AND WELCOMING ENVIRONMENT. THE FLAT FEATURES TWO WELL-PROPORTIONED BEDROOMS, A STANDOUT FEATURE OF THIS PROPERTY IS THE BRAND NEW BATHROOM, DESIGNED WITH CONTEMPORARY FIXTURES AND FINISHES THAT ENHANCE THE OVERALL APPEAL OF THE FLAT.

THE FANTASTIC LOCATION OF THIS FLAT FURTHER ENHANCES ITS DESIRABILITY. CHISWICK IS KNOWN FOR ITS VIBRANT COMMUNITY, EXCELLENT AMENITIES, AND BEAUTIFUL GREEN SPACES, MAKING IT A SOUGHT-AFTER AREA FOR THOSE LOOKING TO ENJOY THE BEST OF LONDON LIVING.

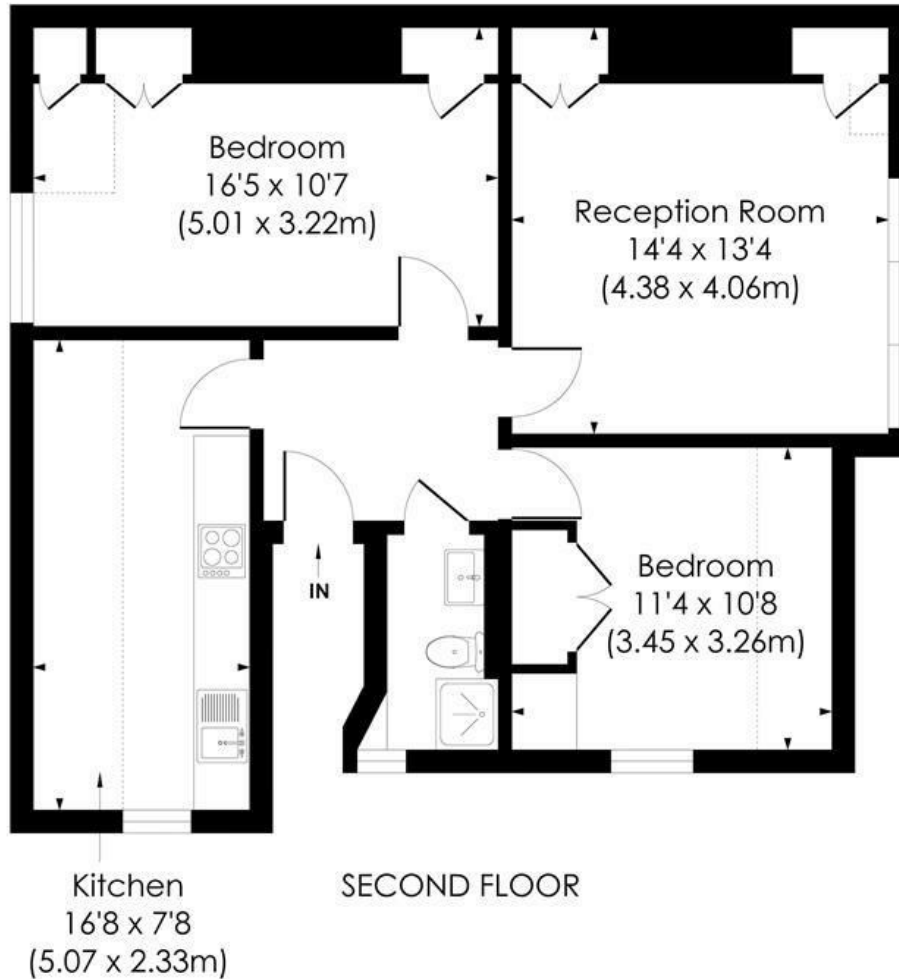
- BRIGHT AND SPACIOUS
- TWO DOUBLE BEDROOMS
- BRAND NEW BATHROOM
- NEWLY REDECORATED THROUGH OUT
- LARGE SEPARATE LIVING ROOM
- EAT-IN KITCHEN
- FANTASTIC LOCATION

£2,375 PER CALENDAR MONTH

WOODSTOCK ROAD, W4

Approx. Gross Internal Floor Area

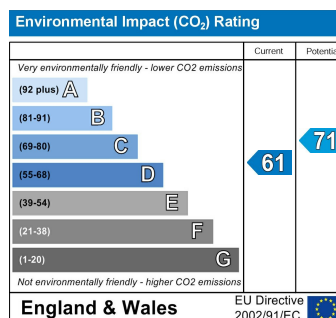
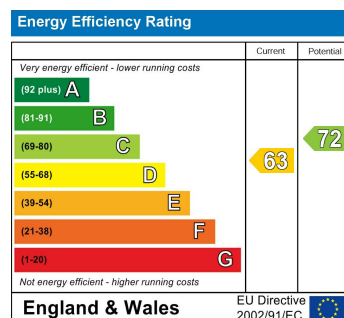
729 Sq. ft/67.69 Sq. m



© Pixangle Property Marketing Ltd. info@pixangle.com Tel: 0208 870 2118

pixangle
PROPERTY MARKETING

This floor plan has been prepared for the purpose of illustration only in accordance with the latest RICS code of measuring practice and is not to scale. All measurements and areas are approximate and whilst every effort has been made to ensure the accuracy of the plan contained here, no responsibility is taken for any error, omission or misstatement.



206 FULHAM PALACE ROAD, HAMMERSMITH, W6 9PA

TEL: 020 7610 1662 EMAIL: ENQUIRIES@L-D-B.CO.UK HTTP://WWW.L-D-B.CO.UK