

# L·D·B

SALES, LETTINGS  
& MANAGEMENT



## 36 SOMERSET ROAD, WIMBLEDON, LONDON, SW19 5JX

DISCOVER YOUR DREAM HOME IN THE HEART OF WIMBLEDON. THIS BEAUTIFULLY RENOVATED FAMILY RESIDENCE OFFERS A PERFECT BLEND OF MODERN COMFORT AND CLASSIC CHARM, FEATURING A SPACIOUS AND MODERN LIVING SPACE WITH A CONTEMPORARY KITCHEN AND TWO BATHROOMS. RELAX IN YOUR PRIVATE, EXCEPTIONALLY LARGE GARDEN, IDEAL FOR ENTERTAINING GUESTS OR SIMPLY ENJOYING THE OUTDOORS.

SITUATED IN A DESIRABLE NEIGHBOURHOOD NEAR TOP-RATED SCHOOLS, PARKS, AND LOCAL AMENITIES, THIS STUNNING PROPERTY WON'T LAST LONG. DON'T MISS THIS OPPORTUNITY TO MAKE IT YOURS. CONTACT US TODAY TO SCHEDULE A VIEWING.

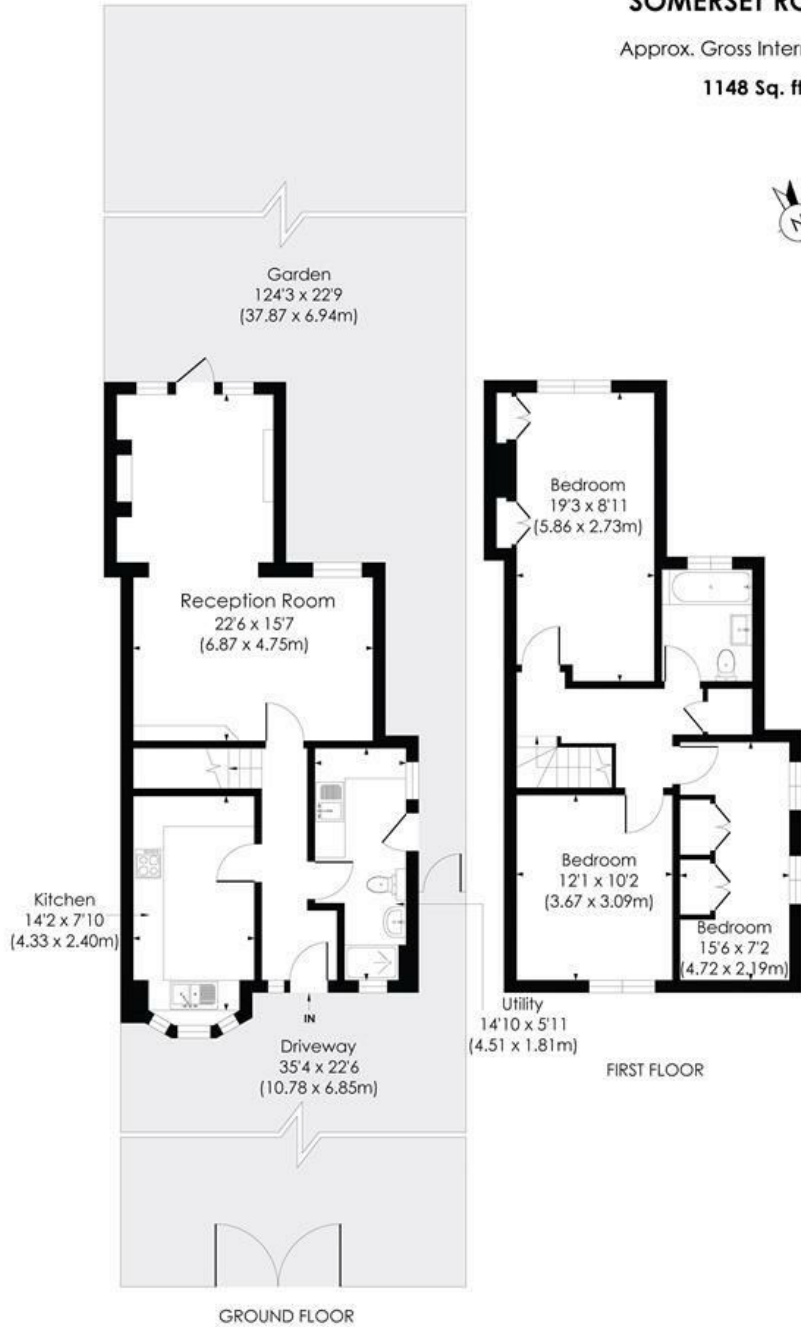
- LARGE PRIVATE GARDEN
- AVAILABLE NOW
- FURNISHED / UNFURNISHED
- NEWLY REFURBISHED THROUGHOUT
- TWO BATHROOMS
- THREE DOUBLE BEDROOMS
- OFF STREET PARKING

£3,995 PER CALENDAR MONTH

# SOMERSET ROAD, SW19

Approx. Gross Internal Floor Area

1148 Sq. ft/106.60 Sq. m



© Pixangle Property Marketing Ltd. info@pixangle.com Tel: 0208 870 2118



This floor plan has been prepared for the purpose of illustration only in accordance with the latest RICS code of measuring practice and is not to scale. All measurements and areas are approximate and whilst every effort has been made to ensure the accuracy of the plan contained here, no responsibility is taken for any error, omission or misstatement.

