



3 Rodsley Lane, Yeaveley, Ashbourne, DE6 2DT

O.I.R.O £285,000

Scofield Stone are pleased to bring for sale located in a tranquil village setting surrounded by green spaces and countryside, this charming three bedroom end of terrace property. The house is in good condition and offers a delightful mix of comfort and characterful features.

3 Rodsley Lane, Yeaveley, Ashbourne, DE6 2DT

Summary description

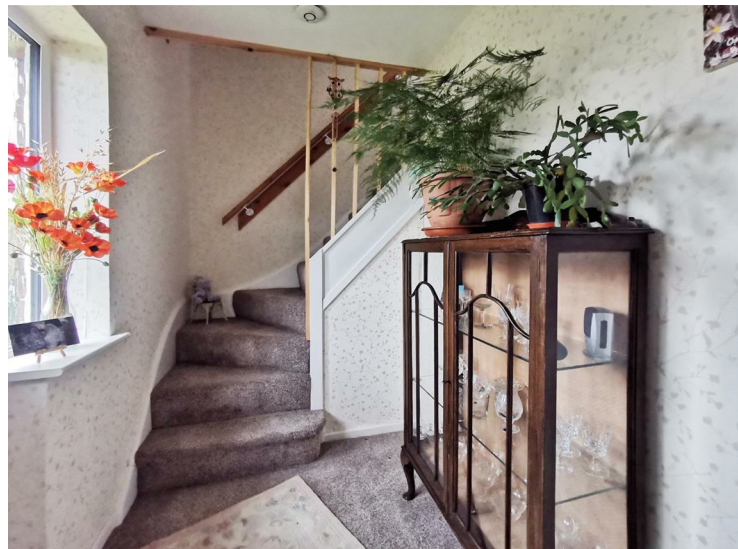
As you enter the property, you are greeted by a reception room that overlooks the garden and features an inviting open fire, perfect for cosy evenings. The ground floor also includes a well-equipped kitchen with original quarry tiles and a Rayburn stove. Additionally, there is a guest toilet within the utility room for added convenience.

Upstairs, the property boasts three bedrooms. Bedroom one is a spacious double bedroom providing ample space for relaxation, while the second bedroom offers built-in wardrobes and stunning views over fields. The third bedroom is perfect as a single bedroom or home office.

Completing the accommodation is a bathroom with a separate toilet and a bath with an electric shower over. The property also benefits from a generous front and rear garden, double glazing throughout, and unique features such as a fireplace and beautiful views.

With its appealing features and peaceful location, this property is ideal for some upgrades and extension subject to local planning permissions. A great property for families and couples seeking a comfortable home with a touch of countryside charm.

Hallway



Having an uPVC door and double-glazed window, stairs leading to the first floor and a door off to;

Lounge Diner

13'5" max x 18'11" (4.11m max x 5.79m)



Spacious room with an original open fireplace double glazed window to the front aspect, uPVC double glazed patio door and windows to the rear garden and door off to;

Kitchen

8'9" min x 13'2" (2.68m min x 4.03m)



Fitted with wall and base units housing a stainless-steel sink and drainer, electric oven and hob. The original solid fuel Rayburn heats the water as well as an usable cooker. Access to the side with an uPVC double glazed window and door.

Vestibule

2'9" x 4'2" (0.86m x 1.28m)

Rear vestibule with door off to;

Utility/WC

5'8" x 4'1" (1.73m x 1.27m)

Plumbing for washing machine, wall cupboard and work surface, low level WC, corner wash basin, obscured upvc double glazed window.

Landing

Loft access, uPVC double glazed window to the side aspect, airing cupboard and doors off to;

3 Rodsley Lane, Yeaveley, Ashbourne, DE6 2DT

Separate Toilet



Fitted with a white low-level WC and UPVC double glazed window to the side aspect.

Bathroom

6'3" x 5'7" (1.93m x 1.72m)



Fitted with the original bath and sink with an electric shower over and obscured uPVC double glazed window to the rear aspect.

Bedroom One

13'8" max x 10'1" (4.17m max x 3.09m)



Having an original fireplace and uPVC double glazed window to the front aspect.

Bedroom Two

8'8" x 11'10" plus wardrobe (2.65m x 3.61m plus wardrobe)



With a built-in wardrobe and uPVC double glazed window to the rear aspect overlooking views.

3 Rodsley Lane, Yeaveley, Ashbourne, DE6 2DT

Bedroom Three

6'5" x 10'1" (1.97m x 3.08m)



Having an over stairs cupboard and uPVC double glazed window to the front aspect.

Outside front

Mainly lawned with established borders and a slabbed pathway to the front and rear.

Outside Rear



Beautifully maintained being tiered with individual planting areas, patio and slab pathway to the rear with two ponds, established plantings, wooden shed and timber and hedge boundaries.

Material Information

Verified Material Information

Asking price: Offers in region of £285,000

Council tax band: B

Council tax annual charge: £1677.44 a year (£139.79 a month)

Tenure: Freehold

Property type: House

Property construction: Standard form

Number and types of room: 3 bedrooms, 1 bathroom, 1 reception

Electricity supply: Mains electricity

Solar Panels: No

Other electricity sources: No

Water supply: Mains water supply

Sewerage: Mains

Heating: Solid fuel

Heating features: Double glazing, Wood burner, and Open fire

Broadband: FTTC (Fibre to the Cabinet)

Mobile coverage: O2 - Excellent, Vodafone - Great, Three - Excellent, EE - Excellent

Parking: None

Building safety issues: No

Restrictions - Listed Building: No

Restrictions - Conservation Area: No

Restrictions - Tree Preservation Orders: None

Public right of way: No

Long-term flood risk: No

Coastal erosion risk: No

Planning permission issues: No

Accessibility and adaptations: None

Coal mining area: No

Non-coal mining area: Yes

Energy Performance rating: F

All information is provided without warranty. Contains HM Land Registry data © Crown copyright and database right 2021. This data is licensed under the Open Government Licence v3.0.

The information contained is intended to help you decide whether the property is suitable for you. You should verify any answers which are important to you with your property lawyer or surveyor or ask for quotes from the appropriate trade experts: builder, plumber, electrician, damp, and timber expert.

Disclaimer 03/2021

These particulars, whilst believed to be accurate are set out as a general outline only for guidance and do not constitute any part of an offer or contract. Floor plans are not drawn to scale and room dimensions are subject to a +/- 50mm (2") tolerance and are based on the maximum dimensions in each room. Intending purchasers



Sales: 01283 777100
Lettings: 01332 511000

www.scofieldstone.co.uk

3 Rodsley Lane, Yeaveley, Ashbourne, DE6 2DT

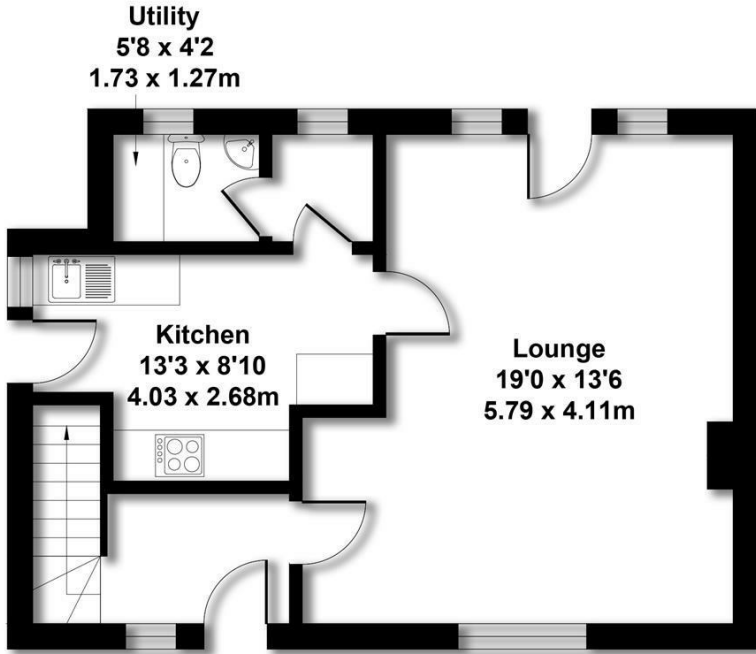
should not rely on them as statements of representation of fact but must satisfy themselves by inspection or otherwise as to their accuracy. No person in this firm's employment has the authority to make or give any representation or warranty in respect of the property or offer any legal advice regarding any aspect of the property and any buyer should consult their own legal representative on any such matters.



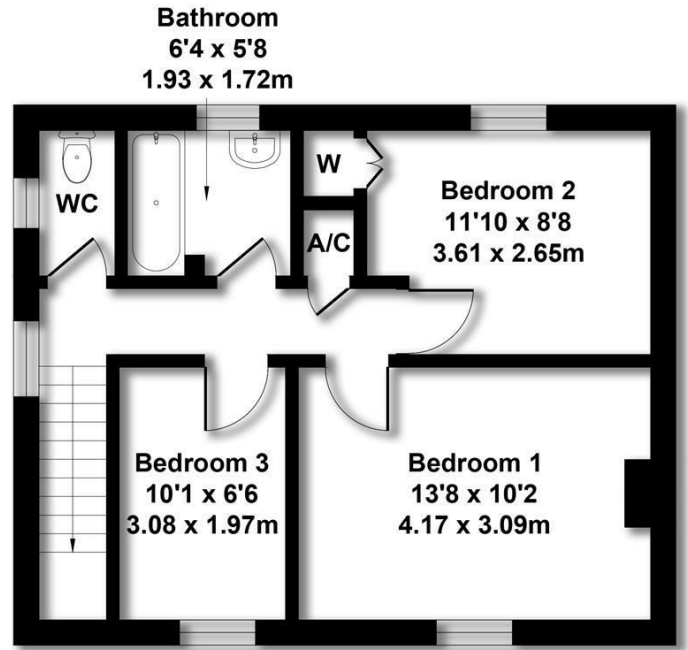
Sales: 01283 777100
Lettings: 01332 511000
www.scofieldstone.co.uk

3 Rodsley Lane

Approximate Gross Internal Area
957 sq ft - 89 sq m

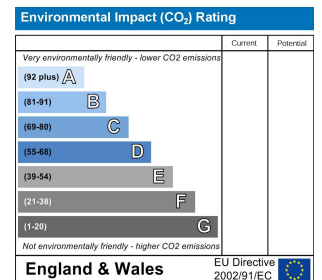
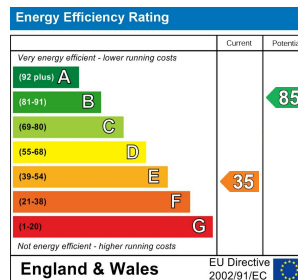


GROUND FLOOR



FIRST FLOOR

Not to Scale. Produced by The Plan Portal 2024
For Illustrative Purposes Only.



Mickleover Office
11 The Square,
Mickleover,
Derby DE3 0DD

Hilton Office
Unit 6, Neighbourhood Centre
Witham Close,
Hilton, Derby DE65 5JR

t: Sales 01283 777100
t: Lettings 01332 511000
e: info@scofieldstone.co.uk
w: www.scofieldstone.co.uk

Co Reg No. 8975758 VAT No. GB186513980