



1 Glade Brow, Grotton, Saddleworth OL4 4LW

Offers Over £500,000

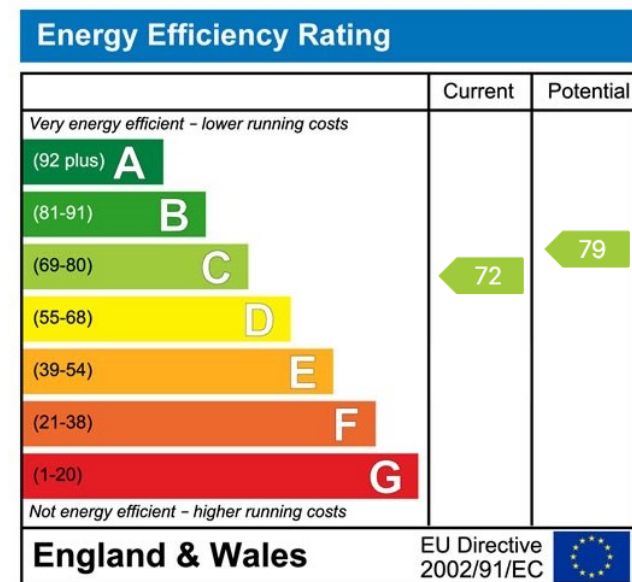
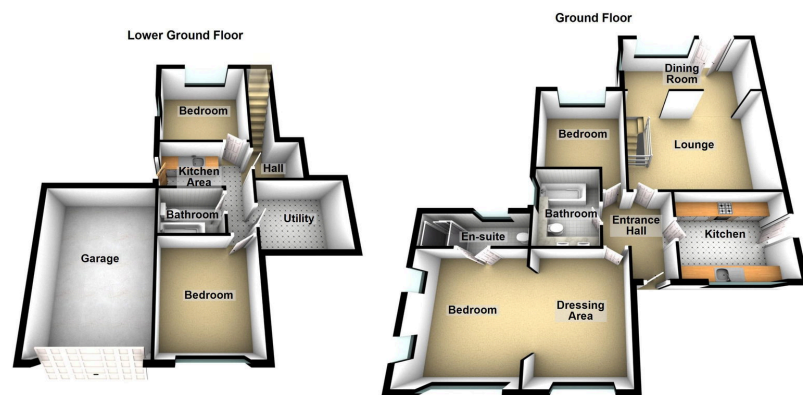
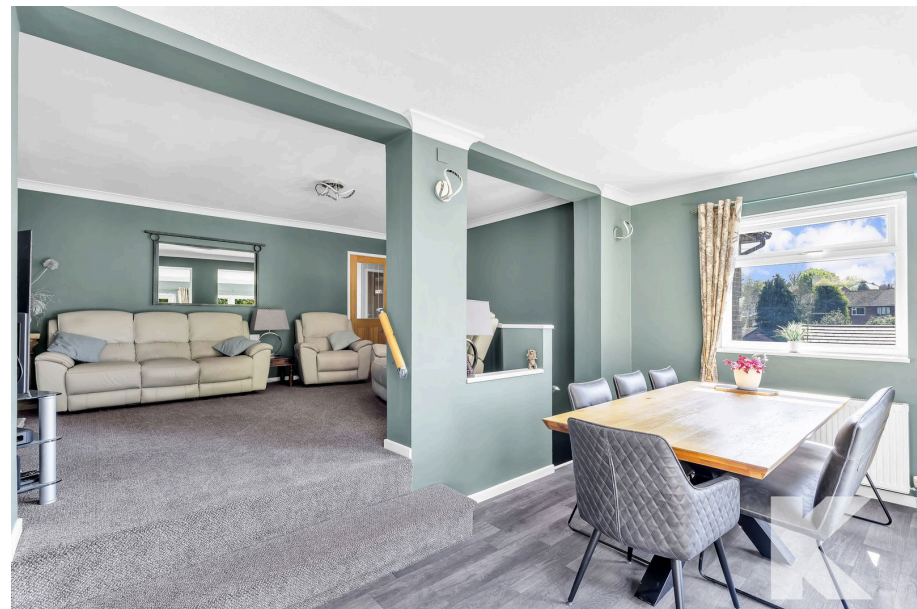
🛏 4 🚿 3 🛋 2



- Detached Property
- Four Bedrooms
- Two Reception Rooms
- Three Bathrooms
- Superb Family Home
- Move In Condition
- EPC - C



Kirkham Property are pleased to offer for sale this superb four bedroom, two reception room detached family home situated in the ever popular area of Grotton in Saddleworth. Presented in move in condition the current owners have meticulously maintained the property and installed quality fixtures and fitting throughout. This property is all ready for the next buyer to call it home. Internally the ample, versatile living space comprises of entrance hallway, lounge open plan to split level dining room overlooking the mature gardens, modern fitted kitchen including appliances, four bedrooms (an amazing master bedroom with dressing area and en-suite), three bath/shower rooms and utility room. Externally there are private established mature gardens to three sides including a lawned garden with steps/ path and shrubs to the front plus a driveway leading to a garage with electric remote door, to the rear a patio and lawned garden and to the side is a sun trap patio with lawned garden.



Chadderton Office

509 Middleton Road,
Chadderton, Oldham,
OL9 9SH

chadderton@kirkham-property.co.uk
t: 0161 626 5688