



10 Lime Grove, Royton, Oldham, OL2 6TH

£209,950

🛏 3 🚿 1 🛋 2



- Semi-Detached House
- Three Bedrooms
- Driveway & Garage
- Conservatory
- Convenient Location to Royton Centre
- EPC Rating: D

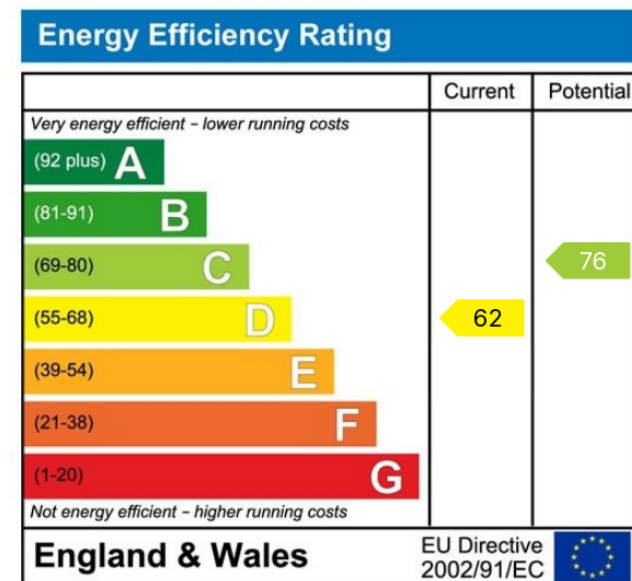
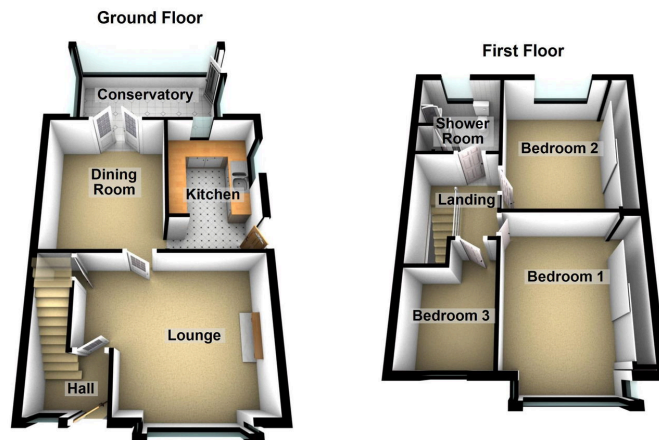


REDUCED & NO CHAIN Offered for sale is this 1930's semi detached family home located in this popular spot in Royton.

Close to good quality local schools and amenities.
Accommodation comprising: Entrance hallway, lounge, dining room, conservatory and a kitchen. To the first floor there are three bedrooms and a shower room.

Externally there is an enclosed rear garden, driveway to the front and a garage to the rear.

Walking distance to Royton centre. Contact us today to arrange a viewing.



Chadderton Office

509 Middleton Road,
Chadderton, Oldham,
OL9 9SH

chadderton@kirkham-property.co.uk
t: 0161 626 5688