



4 Monarch Close, Royton

£184,950

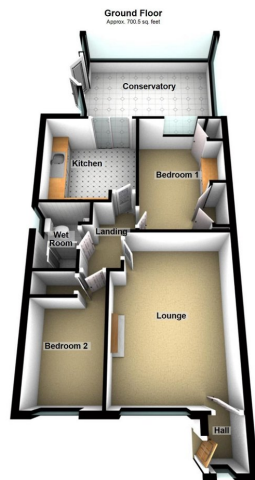
🛏️ 2 🚿 1 🛋️ 2



- No Chain
- Two Bedrooms
- Wet Room
- Great Outlook To The Rear
- Semi Detached True Bungalow
- Large Conservatory
- Good Condition Throughout
- EPC: tbc



Offered for sale is this two bedroom true bungalow located in this tucked away cul-de-sac in Royton. Close to local shops and within an easy walk of Royton centre. Accommodation comprising: Entrance hall, lounge, kitchen, two bedrooms and a wet room. Also there is a good size conservatory overlooking the garden. Externally is a rear garden that over looks an open field to watch the days go by. Offered in good condition throughout and also with no chain. Call us today to arrange a viewing.



Total area: approx. 700.5 sq. feet

Chadderton Office

509 Middleton Road,
Chadderton, Oldham,
OL9 9SH

chadderton@kirkham-property.co.uk

t: 0161 626 5688