



13 Fairway Crescent, Royton

£235,000

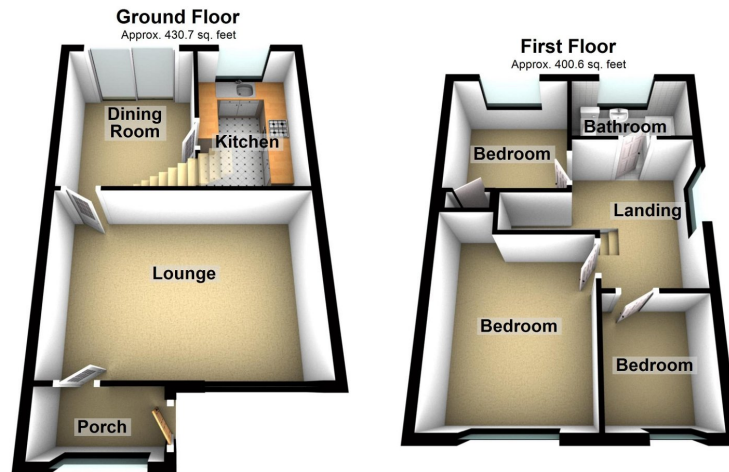
🛏️ 3 🚿 1 🚪 2



- Semi Detached Family Home • Three Bedrooms
- Recently Fitted Kitchen • Lovely Bathroom
- Close To Royton Centre • Long Driveway & Garage
- Private Rear Garden • EPC: D



NO CHAIN. Located in this tucked away cul-de-sac just off Firbank Road in Royton is this three bedroom semi detached family home having recently undergone an update. Accommodation comprising; Entrance porch, large lounge, dining room and a kitchen. To the first floor three good size bedrooms and a family bathroom. Externally a good size rear garden, garage and a frontal driveway for up to three cars. Local schools within a short walk. Royton town centre within walking distance. Motorway networks in close proximity. Call us today to arrange an appointment to view what could be your next home!



Total area: approx. 831.3 sq. feet

Energy Efficiency Rating		
	Current	Potential
Very energy efficient - lower running costs		
(92 plus) A		
(81-91) B		87
(69-80) C		
(55-68) D	56	
(39-54) E		
(21-38) F		
(1-20) G		
Not energy efficient - higher running costs		
England & Wales	EU Directive 2002/91/EC	

Chadderton Office

509 Middleton Road,
Chadderton, Oldham,
OL9 9SH

chadderton@kirkham-property.co.uk
t: 0161 626 5688