



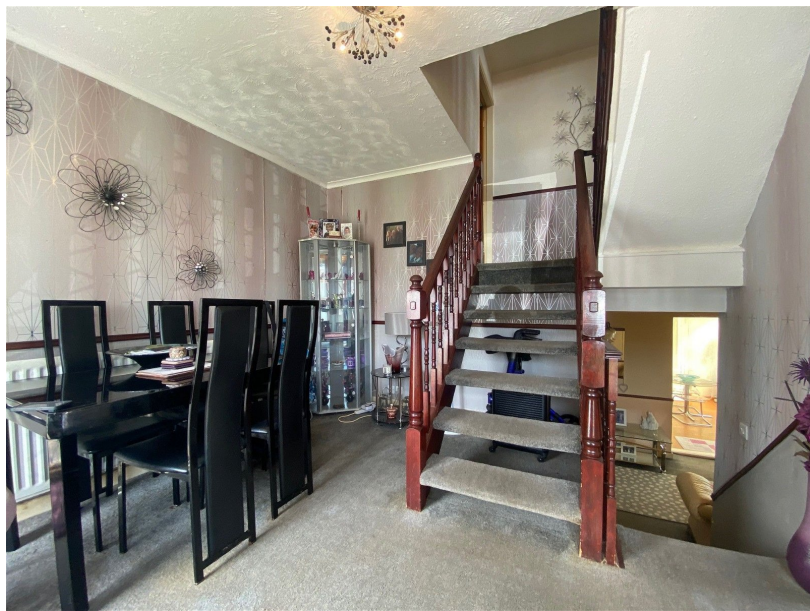
56 Wakefield Drive, Chadderton

£225,000

🛏️ 3 🚿 1 🚗 2



- Semi-Detached Property
- Accommodation over 4 Levels
- Front & Rear Gardens
- Garage
- Three Spacious Bedrooms
- GCH & Double Glazed
- Off-Road Parking
- EPC Rating - D



A Spacious Three Bedroom Semi-Detached Family Property, offered for sale with NO CHAIN therefore VACANT POSSESSION.

Ideally situated in a quiet cul-de-sac location yet close to local transport links, local amenities and the north west motorway network.

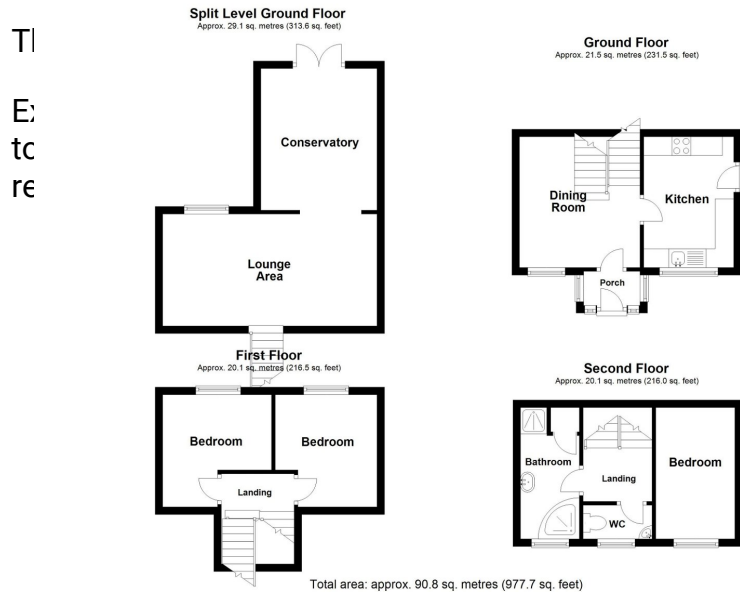
The well proportioned accommodation comprises:-

Ground Floor: Porch, Dining Area & Kitchen.

Lower Ground Floor: Large Lounge Area & Conservatory.

First Floor: Two Double Bedrooms.

Second Floor: Double Bedroom, WC & Bathroom.



g.
rea
e

Score	Energy rating	Current	Potential
92+	A		
81-91	B		81 B
69-80	C		
55-68	D	64 D	
39-54	E		
21-38	F		
1-20	G		

Chadderton Office

509 Middleton Road,
Chadderton, Oldham,
OL9 9SH

chadderton@kirkham-property.co.uk
t: 0161 626 5688