



75 Oozewood Road, Royton

£349,995

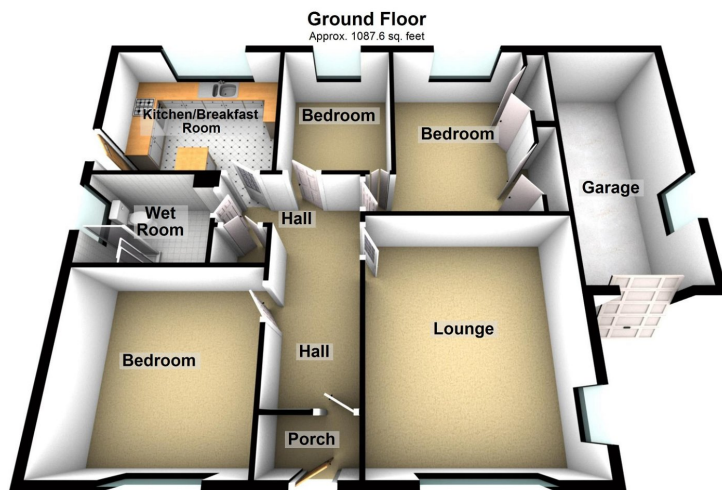
3 1 1



- Individual Detached Bungalow
- No Chain
- A Stones Throw From Tandle Hills
- Garage And Driveway
- Three Bedrooms
- Wonderful Condition Throughout
- South Facing Rear Garden
- EPC: D



Offered for sale is this beautifully presented three bedroom true bungalow located within a stones throw of the award winning Tandle Hill Country Park has No Chain. This lovely home boasts a fantastic south facing rear garden and a large greenhouse. Accommodation comprising of: Entrance porch, large hallway, lounge, well appointed kitchen/breakfast room with fitted appliances, three bedrooms and an exquisite wet room. The property has been re wired and maintained to a high standard. Call us today to view this wonderful property.



Total area: approx. 1087.6 sq. feet

Energy Efficiency Rating		
	Current	Potential
Very energy efficient - lower running costs		
(92 plus) A		
(81-91) B		
(69-80) C		73
(55-68) D	62	
(39-54) E		
(21-38) F		
(1-20) G		
Not energy efficient - higher running costs		
England & Wales	EU Directive 2002/91/EC	

Chadderton Office

509 Middleton Road,
Chadderton, Oldham,
OL9 9SH

chadderton@kirkham-property.co.uk
t: 0161 626 5688