



End Terraced Villa

7 Pladda Court, Irvine, KA11 1DN



taylorandhenderson.co.uk



7 Pladda Court

Taylor & Henderson are delighted to bring to the market this beautifully presented end terrace villa located within an established residential locale and easy access to amenities. The accommodation comprises entrance hallway, modern fitted kitchen, 2 generous storage cupboards in the hallway 1 is currently used as a utility room, under staircase storage, lounge with patio doors out into the rear garden all on the ground floor. The upper level offers modern shower room with free standing shower cubicle, 2 double bedrooms and a further 2 storage cupboards. The property further benefits from double glazing, gas central heating, ample storage throughout and an attached garage. The front garden is paved fully up to the front door for low easy maintenance, there is an attached garage which is tarmacked for easy access. The enclosed rear garden has a decked seating area straight out from the lounge, with artificial lawn beyond and is surrounded by a wooden fence with gated access to the side of the cul-de-sac. The property is conveniently situated within easy access of all local amenities, including local shops, sports and recreational facilities with Ravenspark Golf Course and Irvine Club Golf Course, schools and regular public transport services. Irvine offers good road and rail links to Glasgow, neighbouring Ayrshire towns and the M8 motorway network, thus providing ease of travel throughout West Central Scotland.

Hall	9'9 x 12'3
Lounge	19'7 x 11'7
Utility cupboard	
Kitchen	10'5 x 9'2
Bedroom 1	15'6 x 9'7
Bedroom 2	11'8 x 9'8
Shower Room	9'5 x 5'8

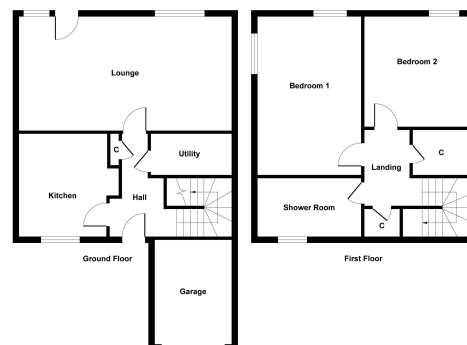
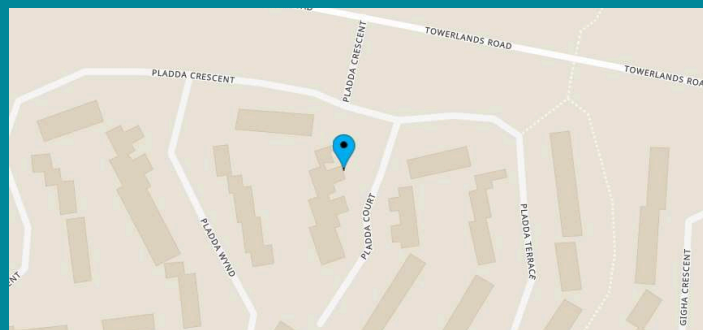


Illustration for identification purposes only, measurements are approximate, not to scale.
Produced by Eureka Property

Viewing
Through solicitors on 01294 606700

Email
property@taylorandhenderson.co.uk

Reference E492009



rightmove



zoopla

OnTheMarket



Taylor
HENDERSON
PROPERTY LTD

DISCLAIMER: Whilst we endeavour to make these particulars as accurate as possible, they do not form part of any contract of offer, nor are they guaranteed. Measurements are approximate and in most cases are taken with a digital/sonic-measuring device and are taken to the widest point. We have not tested the electricity, gas or water services or any appliances. Photographs are reproduced for general information and it must not be inferred that any item is included for sale with the property. If there is any part of this that you find misleading or simply wish clarification on any point, please contact our office immediately when we will endeavour to assist you in any way possible.