



Top Floor Flat

11 Overton Crescent, West Kilbride, KA23 9HG



taylorandhenderson.co.uk

1		2		1		C	EPC rating
---	--	---	--	---	--	---	----------------------

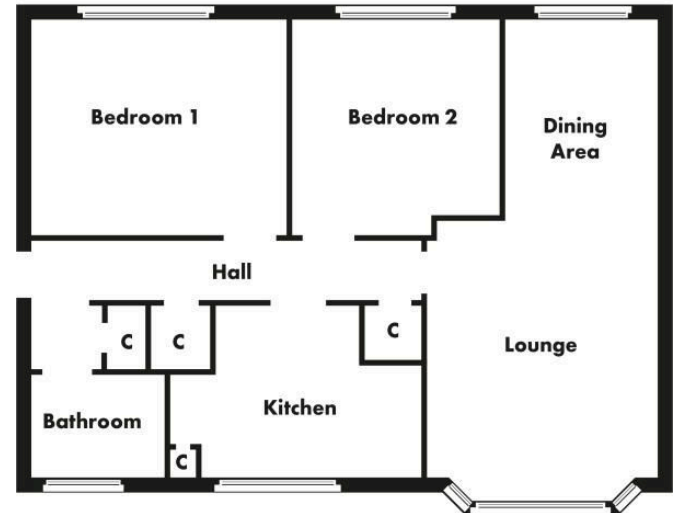
11 Overton Crescent

Taylor and Henderson are delighted to bring to the market this bright and spacious top floor flat in true walk in condition located in an extremely popular, established residential pocket and is within walking distance of all town centre amenities. The accommodation on offer that has been freshly painted throughout offers hallway, bay windowed lounge open to dining room, modern fully fitted kitchen with integrated appliances, 2 double bedrooms one with free standing wardrobes, modern bathroom with over bath shower and excellent cupboard space for storage. Features include double glazing, gas central heating, generous storage space, neat and tidy communal gardens front and rear. The coastal village of West Kilbride and nearby Seamill offer a variety of local amenities including primary school, train station, golf course and beach. The popular Seamill Hydro provides restaurants and leisure facilities. A yachting marina is located nearby. A wide range of further amenities can be found at nearby Largs. The area is also well located for road and rail links to Glasgow City Centre, Glasgow and Prestwick airports and all West motorway networks, thus providing ease of travel throughout West Central Scotland.

Hallway	18'7 x 3'4
Lounge	27'8 x 9'9
Kitchen	10'7 x 9'9
Bedroom 1	14'5 x 10'9
Bedroom 2	10'9 x 10'9
Bathroom	7'0 x 6'3



Floor plans are indicative only - not to scale.



Viewing
Through solicitors on 01294 606700

Email
property@taylorandhenderson.co.uk

Reference E480398