



# Detached Bungalow

Meikle Ittington Farm, ARDROSSAN, KA22 7NX



[taylorandhenderson.co.uk](http://taylorandhenderson.co.uk)

1		3		1		D	<b>EPC</b> rating
---	--	---	--	---	--	---	----------------------



# Meikle Ittington Farm

Taylor and Henderson are delighted to bring to the market, this rarely available rural Detached Cottage boasting country views from all angles.

The accommodation in fresh decorative order throughout, comprises of entrance porch, lounge with feature fireplace, fitted kitchen with door leading to the gardens, 3 double bedrooms and bathroom.

The property also benefits generous storage, double glazing, off road parking and brand new carpets throughout.

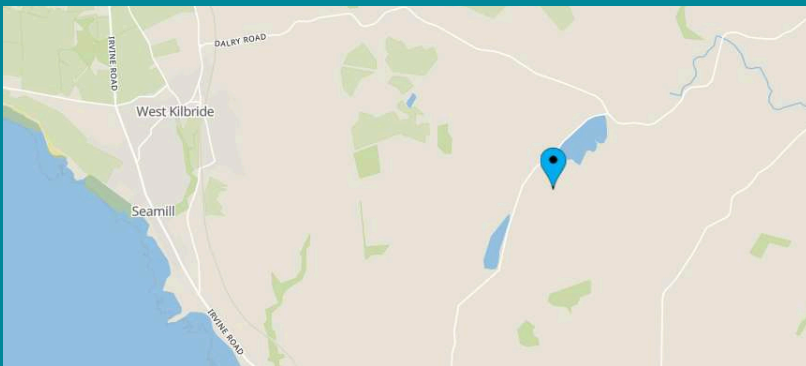
The property benefits a Biomass Boiler which is best described as a community boiler servicing 3 houses. The gardens are mostly laid in lawn, there are decorative chips around the cottage.

Ardrossan and nearby Saltcoats and Dalry both offer a range of local amenities including beach, local shops, supermarket, restaurants, schools, train station and bus services are close by, there is a regular ferry service to the Isle of Arran from Ardrossan Harbour. This excellent property is conveniently situated for all local amenities including road and regular rail links to Glasgow and all West Coast towns.

## Measurements

Entrance Porch	
Lounge	24'11 x 14'5
Kitchen	13'5 x 8'7
Bedroom 1	14'9 x 13'5
Bedroom 2	12'4 x 10'6
Bedroom 3	11'5 x 9'7
Bathroom	9'7 x 4'7

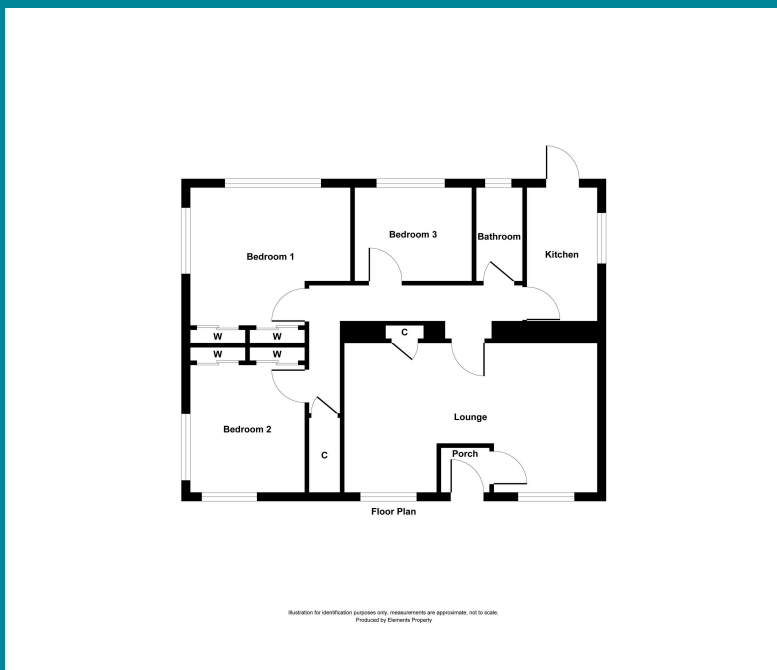




Viewing  
Through solicitors on 01294 606700

Email  
[property@taylorandhenderson.co.uk](mailto:property@taylorandhenderson.co.uk)

Reference  
E474591



## Our Offices

51 Hamilton Street, Saltcoats, Ayrshire, KA21 5DX  
Tel: 01294 606700 & Fax: 01294 464827

22 Bank Street, Irvine, Ayrshire, KA12 0AG  
Tel: 01294 278306 & Fax: 01294 272886

83 Main Street, Kilwinning, Ayrshire, KA13 6AN  
Tel: 01294 557506 & Fax: 01294 558552  
Email: [property@taylorandhenderson.co.uk](mailto:property@taylorandhenderson.co.uk)

espc rightmove  zoopla  OnTheMarket



DISCLAIMER: Whilst we endeavour to make these particulars as accurate as possible, they do not form part of any contract of offer, nor are they guaranteed. Measurements are approximate and in most cases are taken with a digital/sonic-measuring device and are taken to the widest point. We have not tested the electricity, gas or water services or any appliances. Photographs are reproduced for general information and it must not be inferred that any item is included for sale with the property. If there is any part of this that you find misleading or simply wish clarification on any point, please contact our office immediately when we will endeavour to assist you in any way possible.