



ST. PETER'S STREET

London N1



ST. PETER'S STREET

A four bedroom, Georgian townhouse located on the ever popular St Peter Street, Islington.



Local Authority: London Borough of Islington

Council Tax band: G

Tenure: Freehold

Asking price: £2,500,000



ST. PETER'S STREET, LONDON N1

A rare opportunity to acquire this elegant Grade II listed Georgian townhouse in the heart of Islington, offering over 2,100 sq. ft. of beautifully presented living space across five storeys. Featuring an abundance of period charm, this exquisite home seamlessly blends historic character with modern comforts.

The lower ground floor features a spacious eat-in kitchen, providing direct access to a large private rear garden, perfect for outdoor entertaining. At the front, there is a well-proportioned guest bedroom and a bathroom alongside ample storage space.

On the raised ground floor, a double reception room is bathed in natural light, showcasing high ceilings, wooden flooring, original fireplaces, and intricate cornicing. A guest W.C. is conveniently located on this level.







ST. PETER'S STREET, LONDON N1

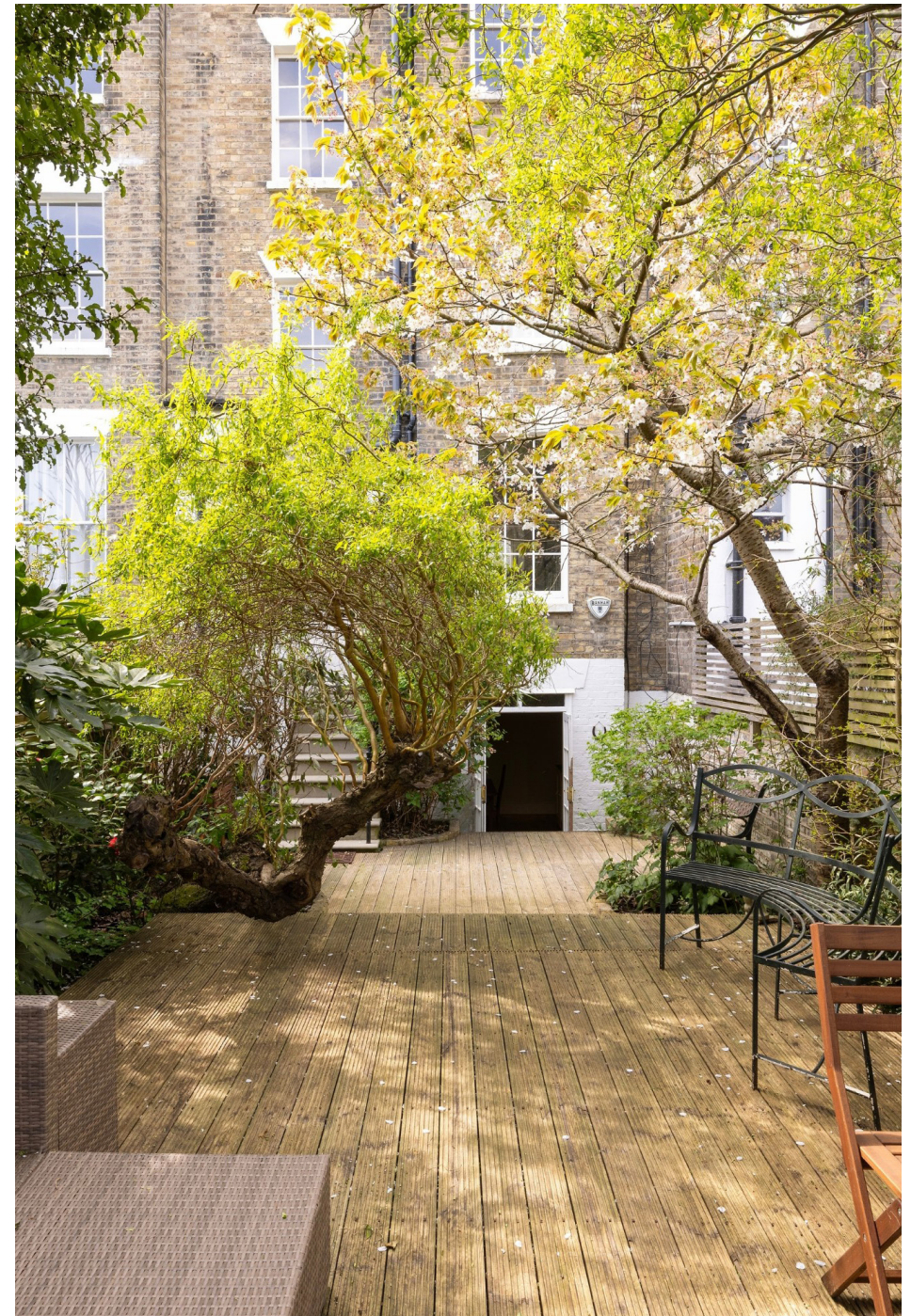
The first floor is dedicated to the principal bedroom, complete with fitted wardrobes and double doors leading to a spacious en-suite bathroom featuring a separate bathtub and contemporary finishes.

The second floor hosts two further generously sized double bedrooms, both with built-in wardrobes, while a staircase leads up to a stylish family bathroom.



ST PETER'S STREET, LONDON N1

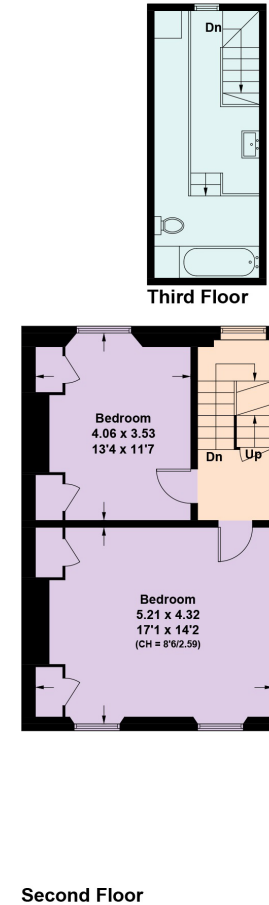
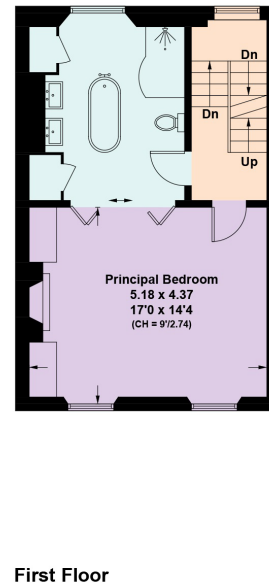
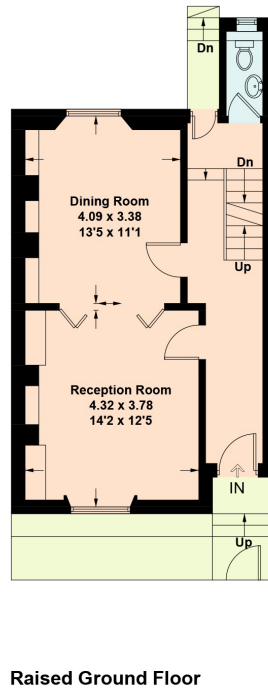
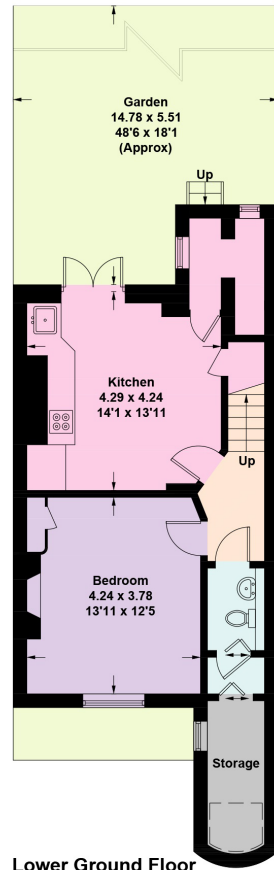
St Peter's Street is conveniently located for all the amenities of central Islington. The nearest Underground station can be found at Angel (Northern line - 0.5 miles), which provides quick and easy access to the City via Bank and to King's Cross/St Pancras for high speed rail connections to Europe. Both Upper Street and Essex Road provide excellent bus routes to the City, the West End and beyond.







St. Peter Street, N1



Approximate Gross Internal Area = 196.8 sq m / 2,118 sq ft
Including Limited Use Area (2.6 sq m / 28 sq ft)

This plan is for layout guidance only. Not drawn to scale unless stated. Windows and door openings are approximate. Whilst every care is taken in the preparation of this plan, please check all dimensions, shapes and compass bearings before making any decisions reliant upon them. (ID767266)

We would be delighted
to tell you more.

Sebastian Toy
+44 203 657 7348
sebastian.toy@knightfrank.com

Knight Frank Islington & Kings Cross
321-322, Upper St
London, N1 2XQ

[knightfrank.co.uk](https://www.knightfrank.co.uk)

Your partners in property

1. Particulars: These particulars are not an offer or contract, nor part of one. You should not rely on statements given by Knight Frank in the particulars, by word of mouth or in writing ("information") as being factually accurate about the property, its condition or its value. Neither Knight Frank nor any joint agent has any authority to make any representations about the property, and accordingly any information given is entirely without responsibility on the part of Knight Frank. 2. Material Information: Please note that the material information is provided to Knight Frank by third parties and is provided here as a guide only. While Knight Frank has taken steps to verify this information, we advise you to confirm the details of any such material information prior to any offer being submitted. If we are informed of changes to this information by the seller or another third party, we will use reasonable endeavours to update this as soon as practical. 3. Photos, Videos etc: The photographs, property videos and virtual viewings etc. show only certain parts of the property as they appeared at the time they were taken. Areas, measurements and distances given are approximate only. 4. Regulations etc: Any reference to alterations to, or use of, any part of the property does not mean that any necessary planning, building regulations or other consent has been obtained. A buyer must find out by inspection or in other ways that these matters have been properly dealt with and that all information is correct. 5. Fixtures and fittings: A list of the fitted carpets, curtains, light fittings and other items fixed to the property which are included in the sale (or may be available by separate negotiation) will be provided by the Seller's Solicitors. 6. VAT: The VAT position relating to the property may change without notice. 7. To find out how we process Personal Data, please refer to our Group Privacy Statement and other notices at <https://www.knightfrank.com/legals/privacy-statement>.

Particulars dated February 2025. Photographs and videos dated February 2025. All information is correct at the time of going to print. Knight Frank is the trading name of Knight Frank LLP. Knight Frank LLP is a limited liability partnership registered in England and Wales with registered number OC305934. Our registered office is at 55 Baker Street, London W1U 8AN. We use the term 'partner' to refer to a member of Knight Frank LLP, or an employee or consultant. A list of members names of Knight Frank LLP may be inspected at our registered office. If you do not want us to contact you further about our services then please contact us by either calling 020 3544 0692, email to marketing.help@knightfrank.com or post to our UK Residential Marketing Manager at our registered office (above) providing your name and address.