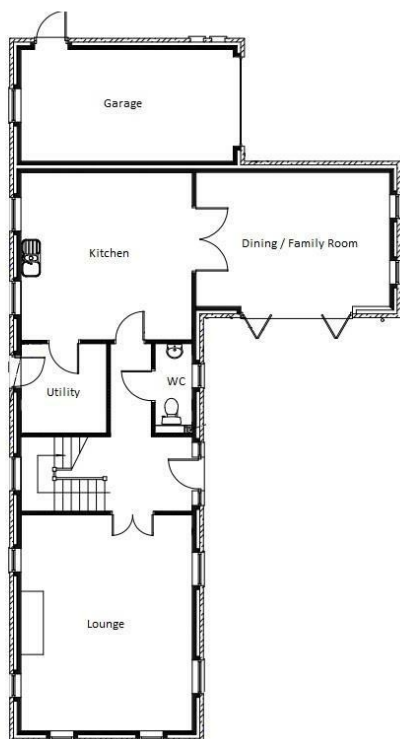




Whispers Barn, 1 Limestone Court, Laughton-en-le-morthen,

£1,795 PCM

- NEW BUILD BARN STYLE PROPERTY
- OAK INTERNAL DOORS & STAIRCASE
- FOUR BEDROOMS
- STRICTLY NO PETS OR SMOKERS
- HIGH SPECIFICATION THROUGHOUT
- HIGH END KITCHEN WITH APPLIANCES
- ALL WINDOWS WITH BLINDS
- UNDERFLOOR HEATING - MULTI ZONES
- TWO RECEPTION ROOMS
- WI-FI INCLUDED WITHIN RENTAL



GROUND FLOOR



FIRST FLOOR



Directions

Viewings

Viewings by arrangement only. Call 01226 799000 to make an appointment.

Council Tax Band

EPC Rating:

B

Energy Efficiency Rating		
	Current	Potential
Very energy efficient - lower running costs		
(92 plus) A		92
(81-91) B	85	
(69-80) C		
(55-68) D		
(39-54) E		
(21-38) F		
(1-20) G		
Not energy efficient - higher running costs		
England & Wales	EU Directive 2002/91/EC	