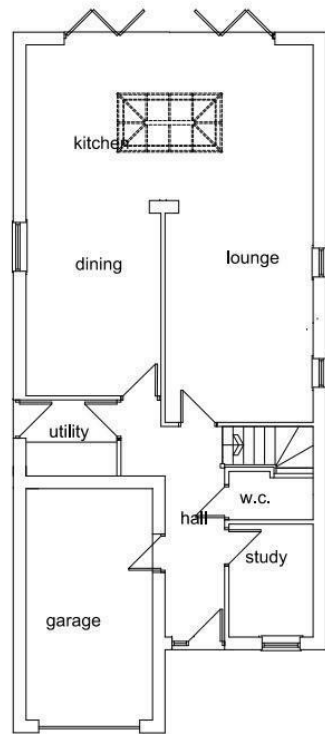




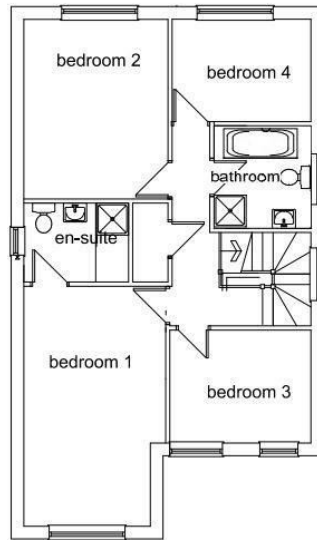
23 Martin Croft, Silkstone, Barnsley, S75 4JS

£599,950

- NATURAL STONE NEW BUILD
- PRIVATE ELECTRIC GATED CUL-DE-SAC
- UNDERFLOOR HEATING
- 1700 SQ FT PROPERTY
- FOUR BEDROOMS
- HIGH SPEC KITCHEN INCLUDING GRANITE WORKTOPS
- FLOOR COVERINGS INCLUDED
- INTEGRAL GARAGE
- INTEGRATED KITCHEN APPLIANCES
- DESIRABLE VILLAGE LOCATION



GROUND FLOOR PLAN



FIRST FLOOR PLAN



Directions

Viewings

Viewings by arrangement only. Call 01226 799000 to make an appointment.

Council Tax Band

New Build

EPC Rating:

Energy Efficiency Rating		Current	Potential
<i>Very energy efficient - lower running costs</i>			
(92 plus)	A		
(81-91)	B		
(69-80)	C		
(55-68)	D		
(39-54)	E		
(21-38)	F		
(1-20)	G		
<i>Not energy efficient - higher running costs</i>			
England & Wales		EU Directive 2002/91/EC	