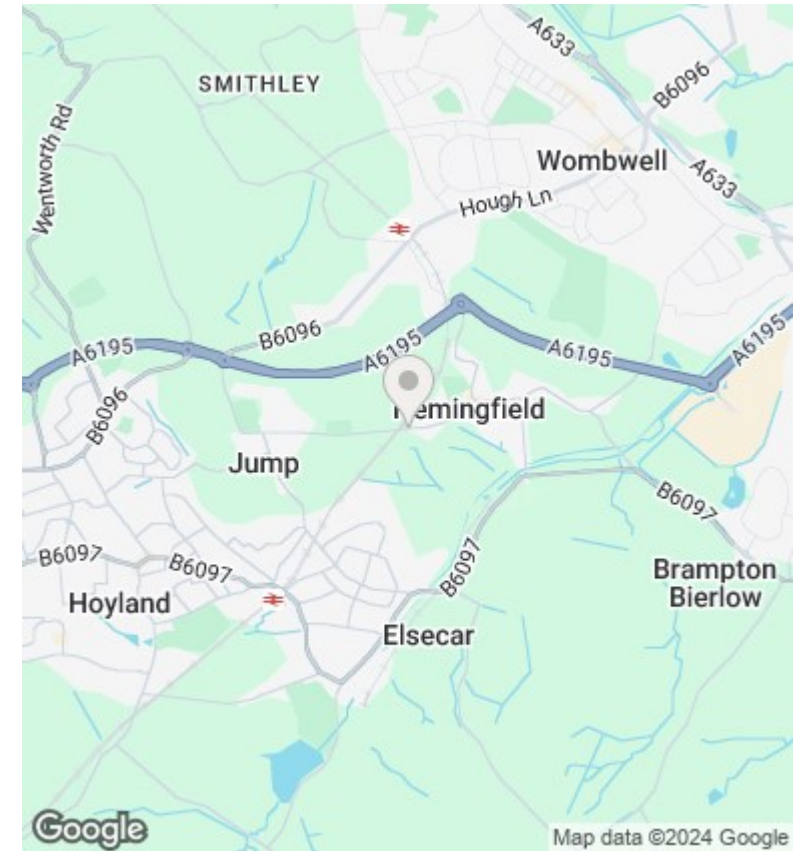
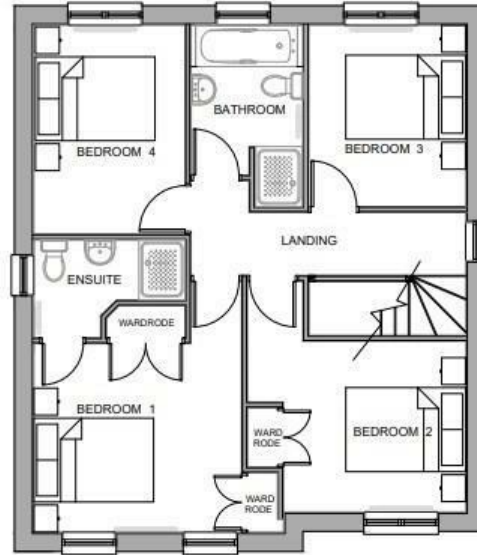
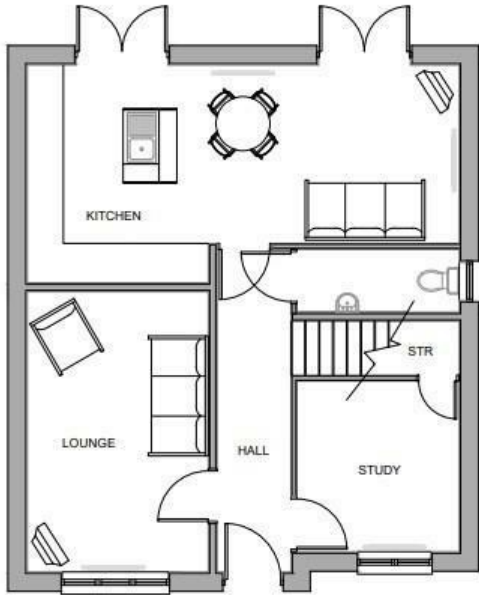


Plot 3 'The Hawthorns' Cemetery Road, Hemingfield, Barnsley, S73

£345,000

- FINAL PHASE OF NEW HOMES NOW RELEASED
- CUL-DE-SAC LOCATION
- LARGE OPEN PLAN KITCHEN DINER & FAMILY ROOM
- FOUR BEDROOM DETACHED
- UNDERFLOOR HEATING TO GROUND FLOOR
- 10 YEAR PREMIER BUILD GUARANTEE
- SINGLE GARAGE
- SEPARATE STUDY ROOM



Directions

Viewings

Viewings by arrangement only. Call 01226 799000 to make an appointment.

Council Tax Band

New Build

EPC Rating:

Energy Efficiency Rating		
	Current	Potential
<i>Very energy efficient - lower running costs</i>		
(92 plus) A		
(81-91) B		
(69-80) C		
(55-68) D		
(39-54) E		
(21-38) F		
(1-20) G		
<i>Not energy efficient - higher running costs</i>		
England & Wales	EU Directive 2002/91/EC	