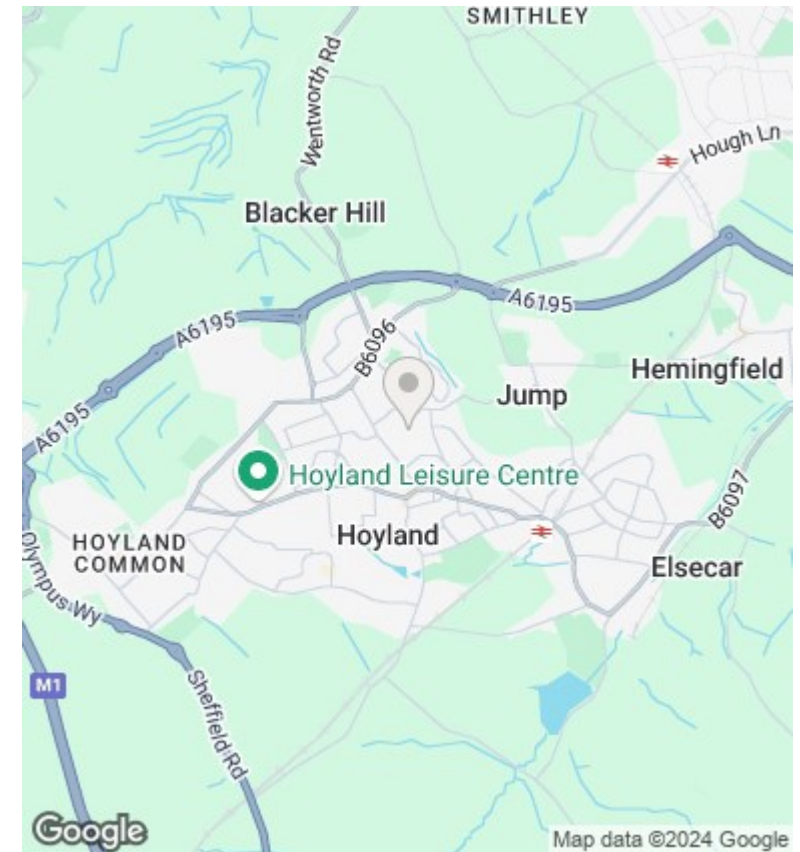
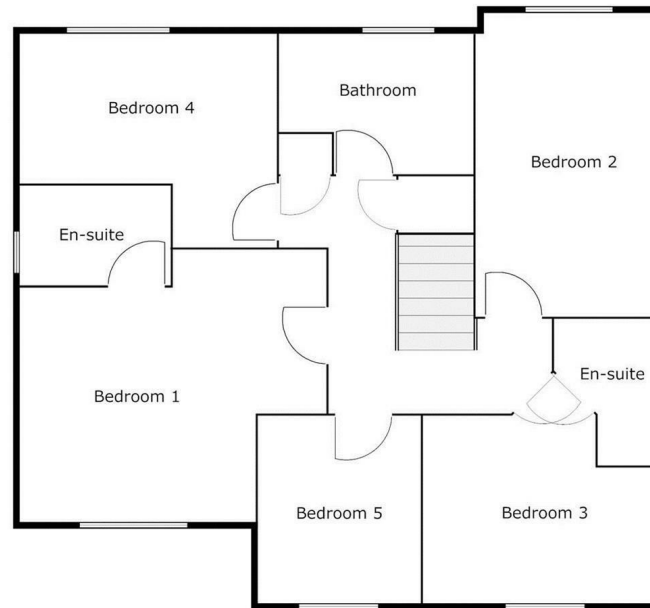
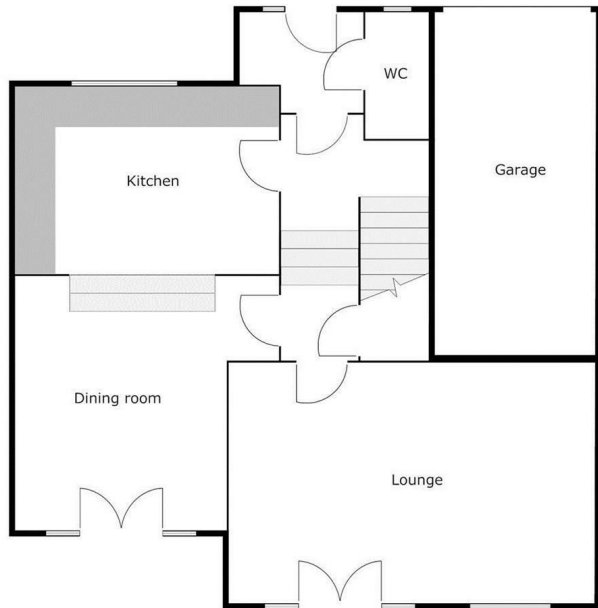




3 Rother Mews, Hoyland, Barnsley, S74 0PJ

Offers Over £399,950

- FIVE BEDROOMS
- PRIVATE CUL-DE-SAC
- ARTIFICIAL LAWN AND BRICK SUMERHOUSE
- TWO RECEPTION ROOMS
- OPEN PLAN KITCHEN/DINER
- VIEWING ESSENTIAL!
- TWO EN-SUITES
- INTEGRAL GARAGE
- APPROX 1750 SQ FT (INC GARAGE)



Directions

Viewings

Viewings by arrangement only. Call 01226 799000 to make an appointment.

Council Tax Band

E

EPC Rating:

C

Energy Efficiency Rating		
	Current	Potential
Very energy efficient - lower running costs		
(92 plus) A		
(81-91) B		
(69-80) C		
(55-68) D		
(39-54) E		
(21-38) F		
(1-20) G		
Not energy efficient - higher running costs		
England & Wales	EU Directive 2002/91/EC	