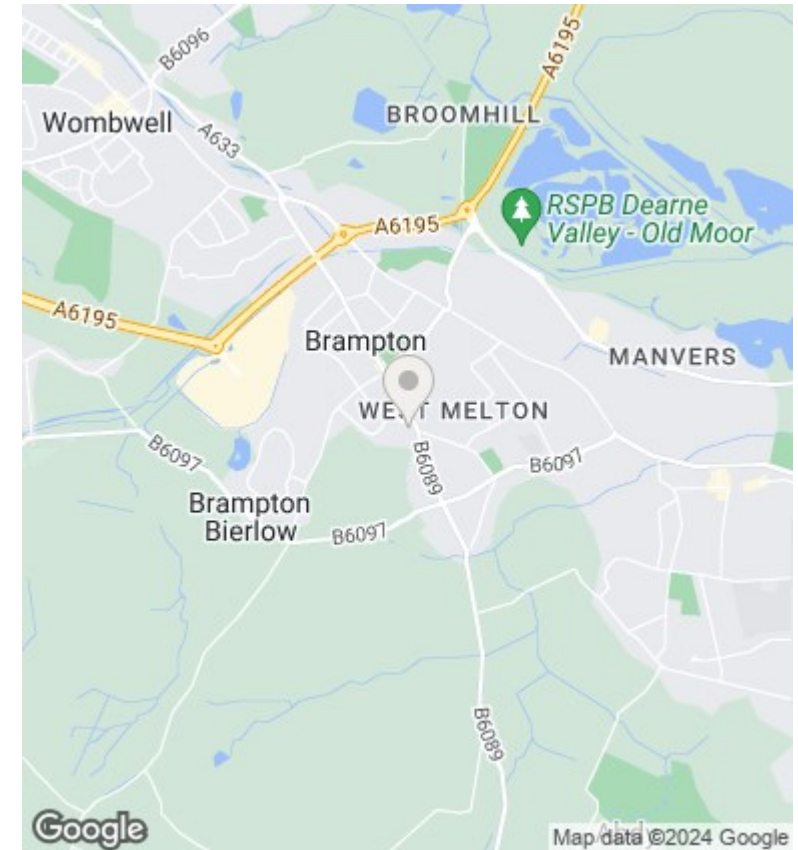
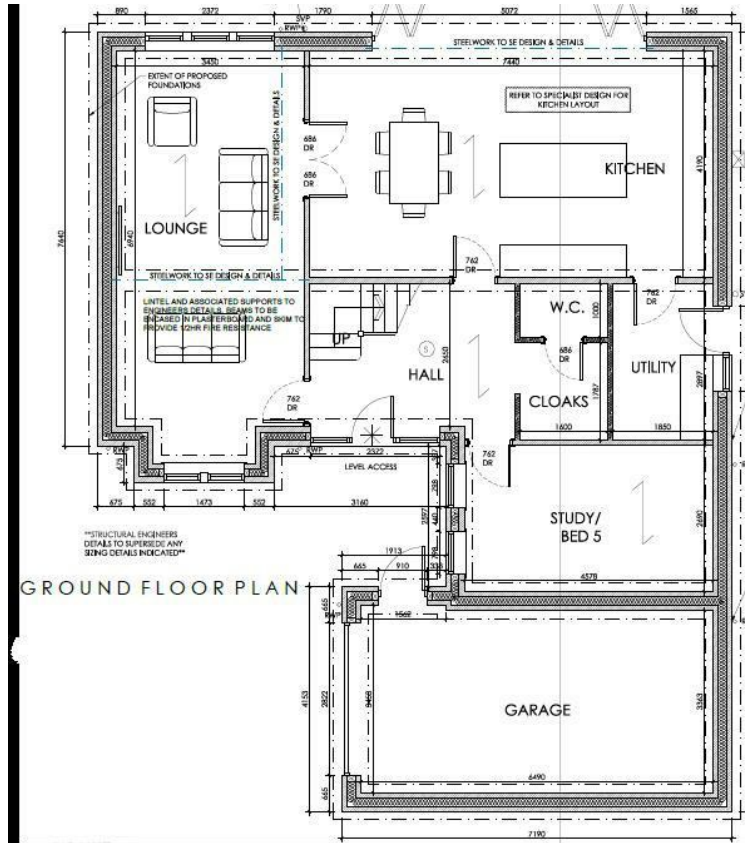




5 Wentworth Mews, Brampton Bierlow, Rotherham, S63 6GQ

£560,000

- NEW ENERGY EFFICIENT HOME
- 24FT LOUNGE
- SOLAR PANELS WITH BATTERY STORAGE
- HIGHLY INSULATED
- FIVE BEDROOMS
- 24FT FAMILY KITCHEN
- DETACHED GARAGE
- TWO EN-SUITE BEDROOMS
- GRANITE WORKTOPS
- GAS CENTRAL HEATING



Directions

Viewings

Viewings by arrangement only. Call 01226 799000 to make an appointment.

Council Tax Band

New Build

EPC Rating:

Energy Efficiency Rating		
	Current	Potential
<i>Very energy efficient - lower running costs</i>		
(92 plus) A		
(81-91) B		
(69-80) C		
(55-68) D		
(39-54) E		
(21-38) F		
(1-20) G		
<i>Not energy efficient - higher running costs</i>		
England & Wales	EU Directive 2002/91/EC	