



## FRONT ELEVATION



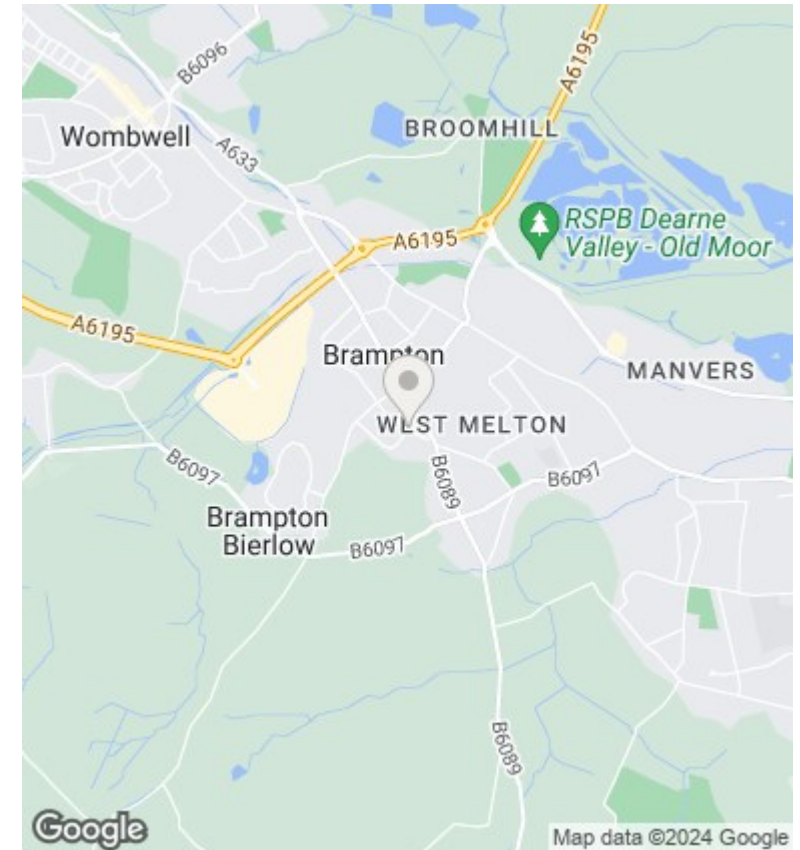
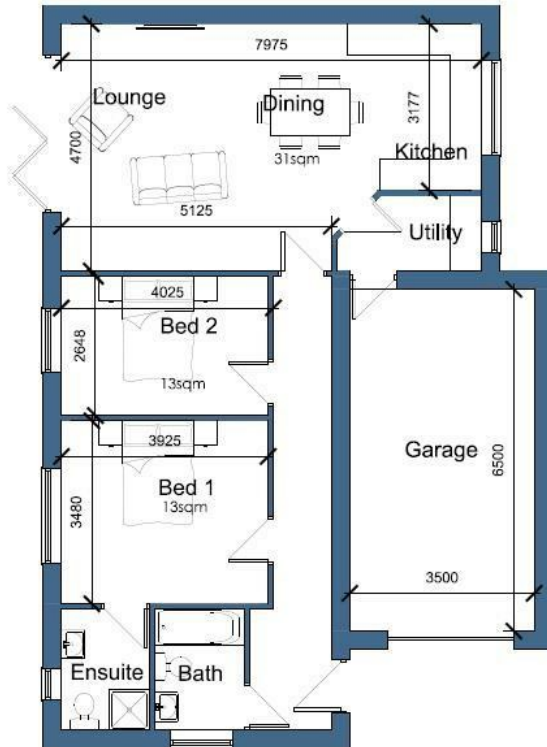
## REAR ELEVATION



### Plot 9 Wentworth Mews, off Manor Road, Brampton Bierlow,

£349,950

- HIGH STANDARD SPECIFICATION
- BI-FOLD DOORS TO LIVING AREAS
- FLOOR COVERINGS INCLUDED
- OVER 800 SQ FT (1050 INC GARAGE)
- TWO BEDROOMS
- FULLY INTEGRATED APPLIANCES
- SOLAR PANELS & BATTERY STORAGE
- EN-SUITE TO MASTER BEDROOM
- GARAGE
- BENEFIT OF LOWER ELECTRIC BILLS



## Directions

## Viewings

Viewings by arrangement only. Call 01226 799000 to make an appointment.

## Council Tax Band

New Build

## EPC Rating:

Energy Efficiency Rating		Current	Potential
<i>Very energy efficient - lower running costs</i>			
(92 plus)	<b>A</b>		
(81-91)	<b>B</b>		
(69-80)	<b>C</b>		
(55-68)	<b>D</b>		
(39-54)	<b>E</b>		
(21-38)	<b>F</b>		
(1-20)	<b>G</b>		
<i>Not energy efficient - higher running costs</i>			
<b>England &amp; Wales</b>		EU Directive 2002/91/EC	