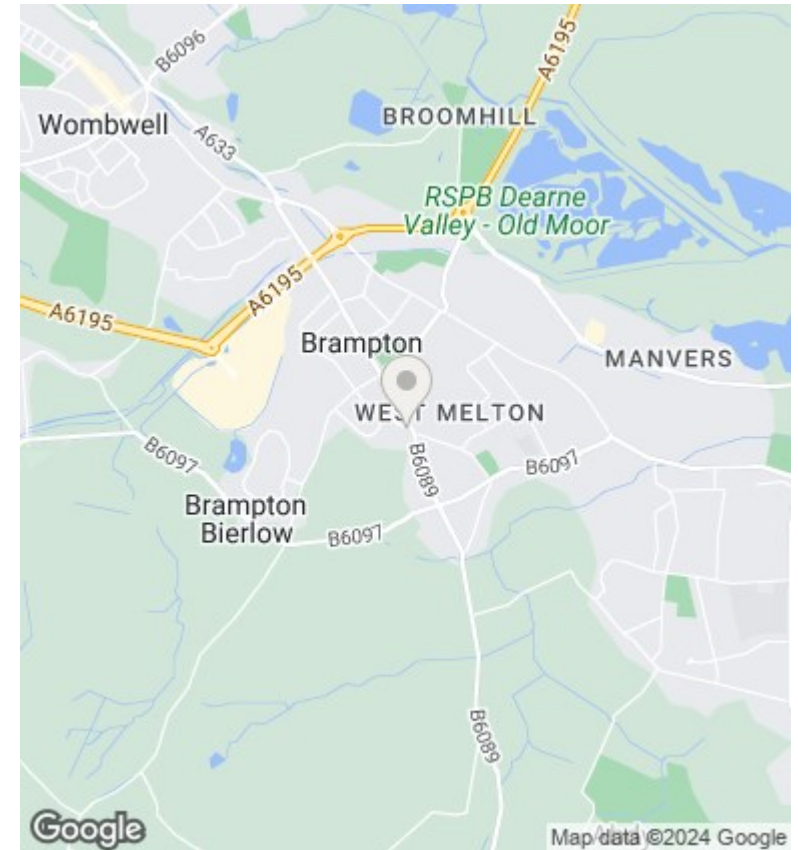
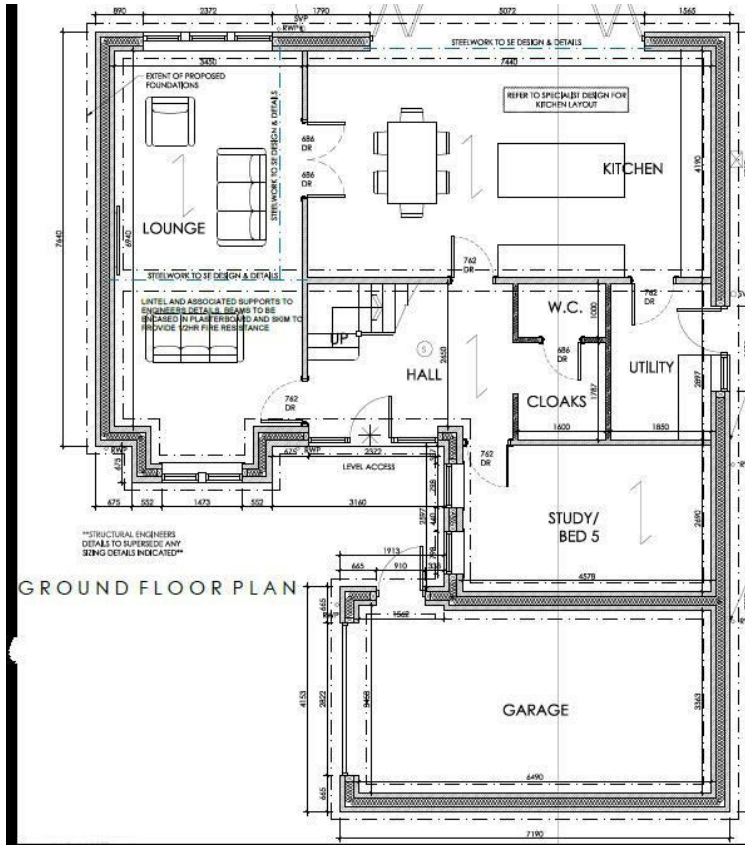


## Plot 3 Wentworth Mews Off Manor Road, Brampton Bierlow,

£539,950

- NEW ENERGY EFFICIENT HOMES
- 24FT LOUNGE
- DETACHED GARAGE
- FIVE BEDROOMS
- 24FT FAMILY KITCHEN
- HIGHLY INSULATED
- TWO EN-SUITE BEDROOMS
- SOLAR PANELS WITH BATTERY STORAGE
- GAS CENTRAL HEATING



## Directions

## Viewings

Viewings by arrangement only. Call 01226 799000 to make an appointment.

## Council Tax Band

New Build

## EPC Rating:

Energy Efficiency Rating		
	Current	Potential
<i>Very energy efficient - lower running costs</i>		
(92 plus) <b>A</b>		
(81-91) <b>B</b>		
(69-80) <b>C</b>		
(55-68) <b>D</b>		
(39-54) <b>E</b>		
(21-38) <b>F</b>		
(1-20) <b>G</b>		
<i>Not energy efficient - higher running costs</i>		
<b>England &amp; Wales</b>	EU Directive 2002/91/EC	