



WhiteAqua

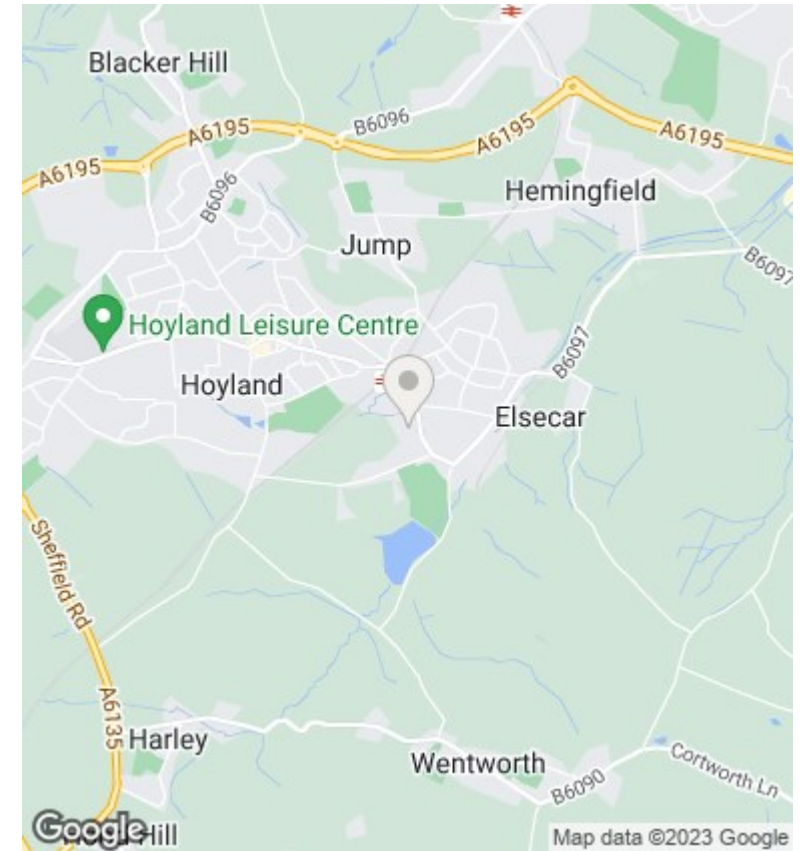
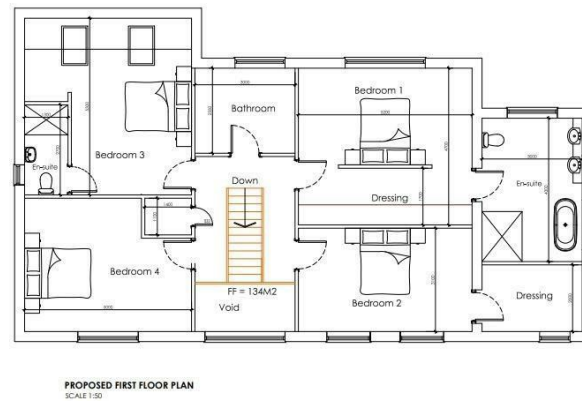
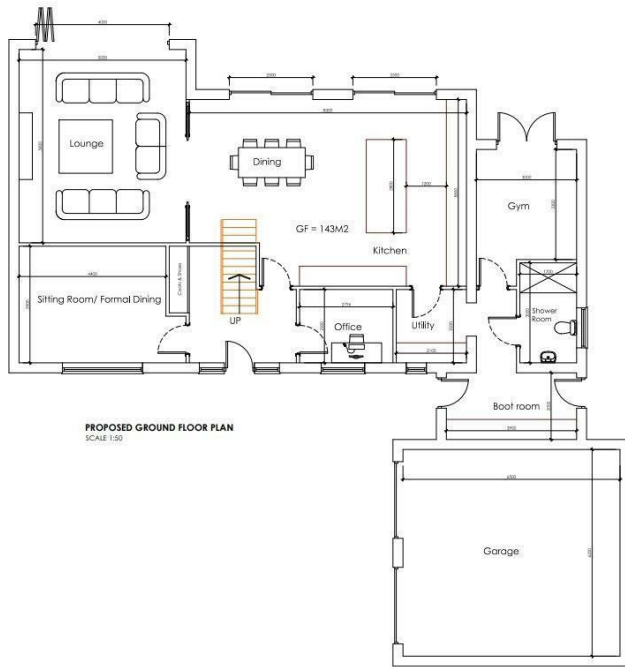


WhiteAqua

6 Hill Street, Elsecar, Barnsley, S74 8EF

£335,000

- PLANNING FOR TWO DETACHED
- 0.31 ACRE SITE
- IDEAL FOR SELF BUILD OR DEVELOPER
- OPEN ASPECT AT REAR OF SITE
- 4800 SQ FT OF ACCOMMODATION



Directions

Viewings

Viewings by arrangement only. Call 01226 799000 to make an appointment.

Council Tax Band

EPC Rating:

Energy Efficiency Rating		
	Current	Potential
<i>Very energy efficient - lower running costs</i>		
(92 plus) A		
(81-91) B		
(69-80) C		
(55-68) D		
(39-54) E		
(21-38) F		
(1-20) G		
<i>Not energy efficient - higher running costs</i>		
England & Wales	EU Directive 2002/91/EC	