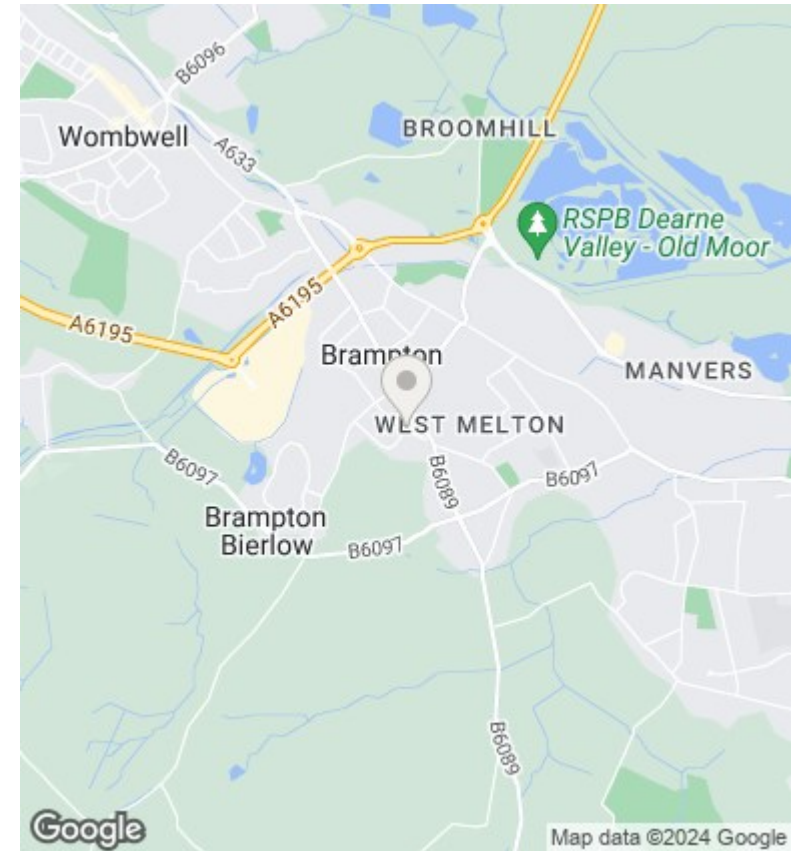
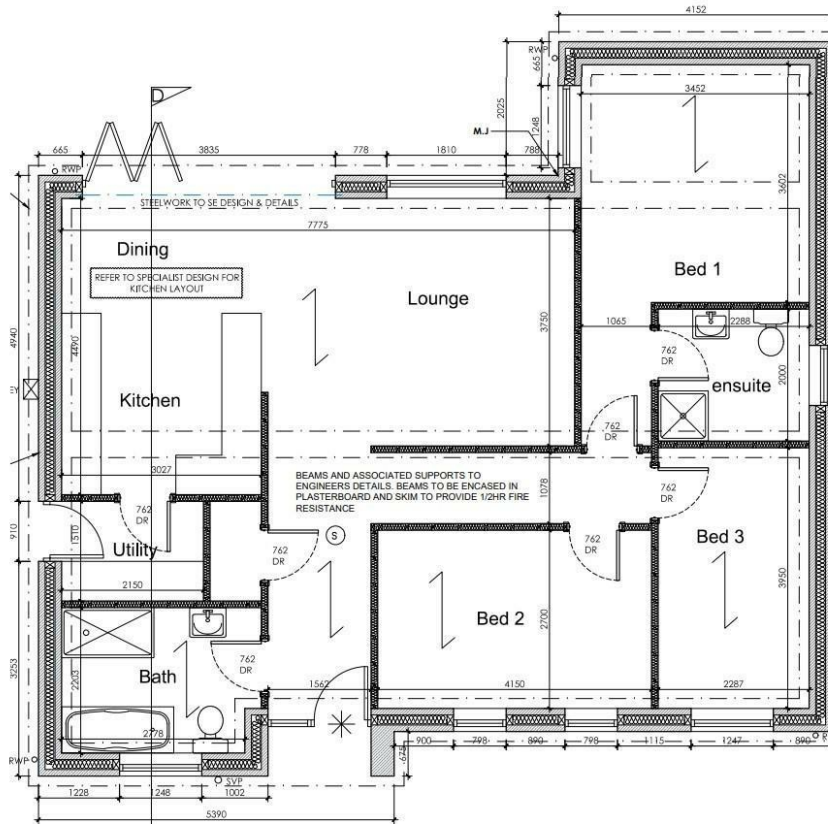


Plot 8 Wentworth Mews, off Manor Road, Brampton Bierlow,

£349,950

- OVER 1000 SQ FT
- EN-SUITE TO MASTER BEDROOM
- FLOOR COVERINGS INCLUDED
- LAST BUNGALOW REMAINING
- THREE BEDROOMS
- BI-FOLD DOORS TO LIVING AREAS
- SOLAR PANELS & BATTERY STORAGE
- HIGH STANDARD SPECIFICATION
- FULLY INTEGRATED APPLIANCES
- BENEFIT OF LOWER ELECTRIC BILLS



Directions

Viewings

Viewings by arrangement only. Call 01226 799000 to make an appointment.

Council Tax Band

EPC Rating:

Energy Efficiency Rating		
	Current	Potential
<i>Very energy efficient - lower running costs</i>		
(92 plus) A		
(81-91) B		
(69-80) C		
(55-68) D		
(39-54) E		
(21-38) F		
(1-20) G		
<i>Not energy efficient - higher running costs</i>		
England & Wales	EU Directive 2002/91/EC	