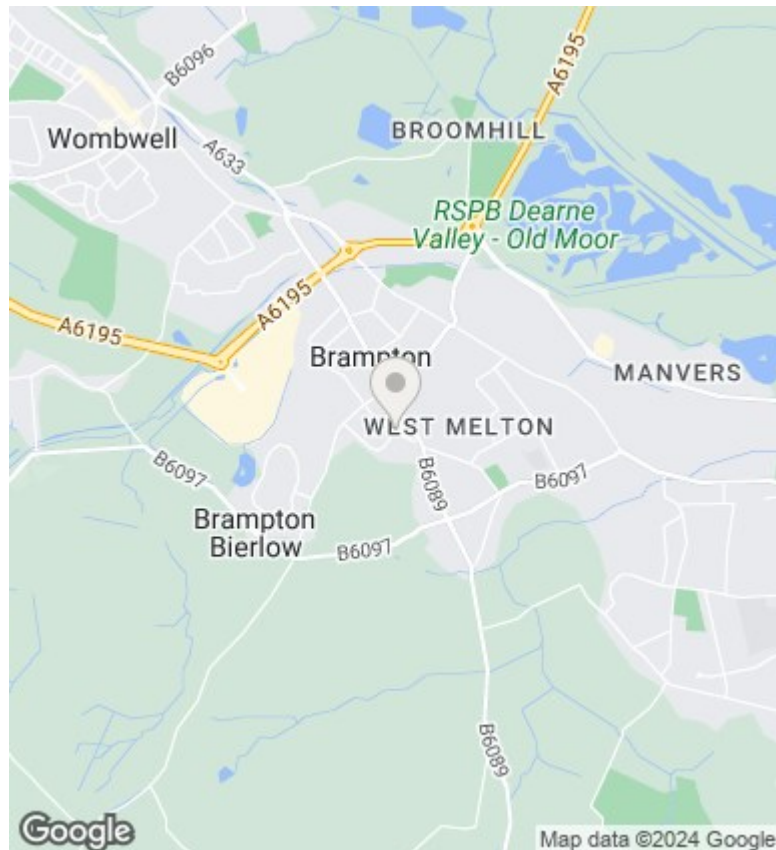
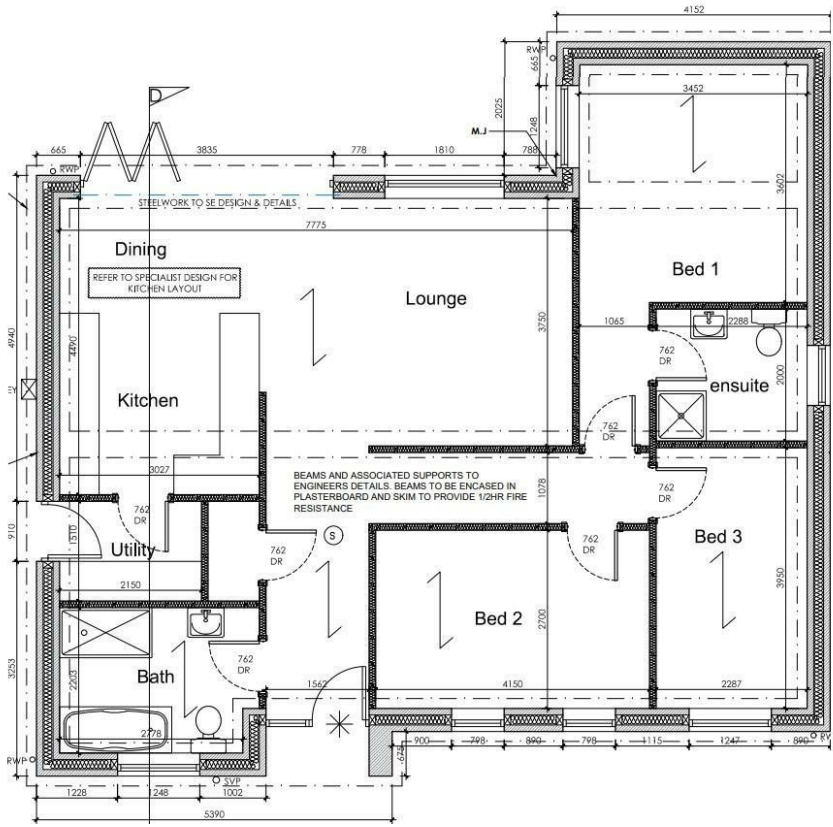


## Plot 8 Wentworth Mews, off Manor Road, Brampton Bierlow,

£349,950

- OVER 1000 SQ FT
- EN-SUITE TO MASTER BEDROOM
- FLOOR COVERINGS INCLUDED
- LAST BUNGALOW REMAINING
- THREE BEDROOMS
- BI-FOLD DOORS TO LIVING AREAS
- SOLAR PANELS & BATTERY STORAGE
- HIGH STANDARD SPECIFICATION
- FULLY INTEGRATED APPLIANCES
- BENEFIT OF LOWER ELECTRIC BILLS



**Directions**

**Viewings**

Viewings by arrangement only. Call 01226 799000 to make an appointment.

**Council Tax Band**

**EPC Rating:**

**Energy Efficiency Rating**

|  | Current                 | Potential |
|--|-------------------------|-----------|
| <i>Very energy efficient - lower running costs</i> |                         |           |
| (92 plus) <b>A</b>                                 |                         |           |
| (81-91) <b>B</b>                                   |                         |           |
| (69-80) <b>C</b>                                   |                         |           |
| (55-68) <b>D</b>                                   |                         |           |
| (39-54) <b>E</b>                                   |                         |           |
| (21-38) <b>F</b>                                   |                         |           |
| (1-20) <b>G</b>                                    |                         |           |
| <i>Not energy efficient - higher running costs</i> |                         |           |
| <b>England &amp; Wales</b>                         | EU Directive 2002/91/EC |           |