



OLD CHAPEL COTTAGE

COLD ASTON, GL54 3BJ



MAXWELL DOUGLAS
CHARTERED SURVEYORS | ESTATE AGENTS

Old Chapel Cottage

An immaculately presented period cottage in a pretty Cotswold village



- Central village location
- Energy efficient
- Immaculately presented
- High quality integrated kitchen appliances
- Hand built kitchen & wardrobes
- Garden
- Garden room/home office

Location

Bourton On The Water	2.5 miles
Stow-On-The-Wold	6 miles
Cheltenham	14 miles
Chipping Norton	15 miles
Daylesford Organic Farm Shop	9 miles
Kingham Station	12 miles
London Paddington	circa 80 mins
(all distances and times are approximate).	

Situation

Cold Aston is a pretty village within easy reach of Bourton On The Water and Stow On The Wold with wider economic and cultural amenities available in Cheltenham. Village amenities include an active village hall, The Plough pub, church, primary school, allotments and The Nuttery cafe situated on the neighbouring Notgrove estate. There are also many public footpaths and bridlepaths to explore the beautiful surrounding countryside. The property is situated on a quiet no through lane in the heart of the village.

Description

Old Chapel Cottage was a former Baptist chapel originally built in 1902 and underwent a major refurbishment in 2018. The accommodation is immaculately presented and includes a galleried entrance hall, an Evie Willow hand built kitchen (installed 2023) with integrated appliances, breakfast bar and built in dining area. Off the kitchen is a utility room and cloakroom. The sitting room is accessed from the hall and enjoys a wood burning stove and French doors to the garden. Upstairs there is a principal bedroom with built in wardrobes and an en-suite bathroom. There are two further bedrooms and a shower room.

Outside

The property benefits from off street parking, an enclosed hard landscaped private garden and a converted stone garage offering storage plus a gym or home office.

General Information

- Council Tax Band E
- Local Authority: Cotswold District Council
- Oil central heating
- Private drainage

For further information or to arrange a viewing please contact us on 01608 644 000.

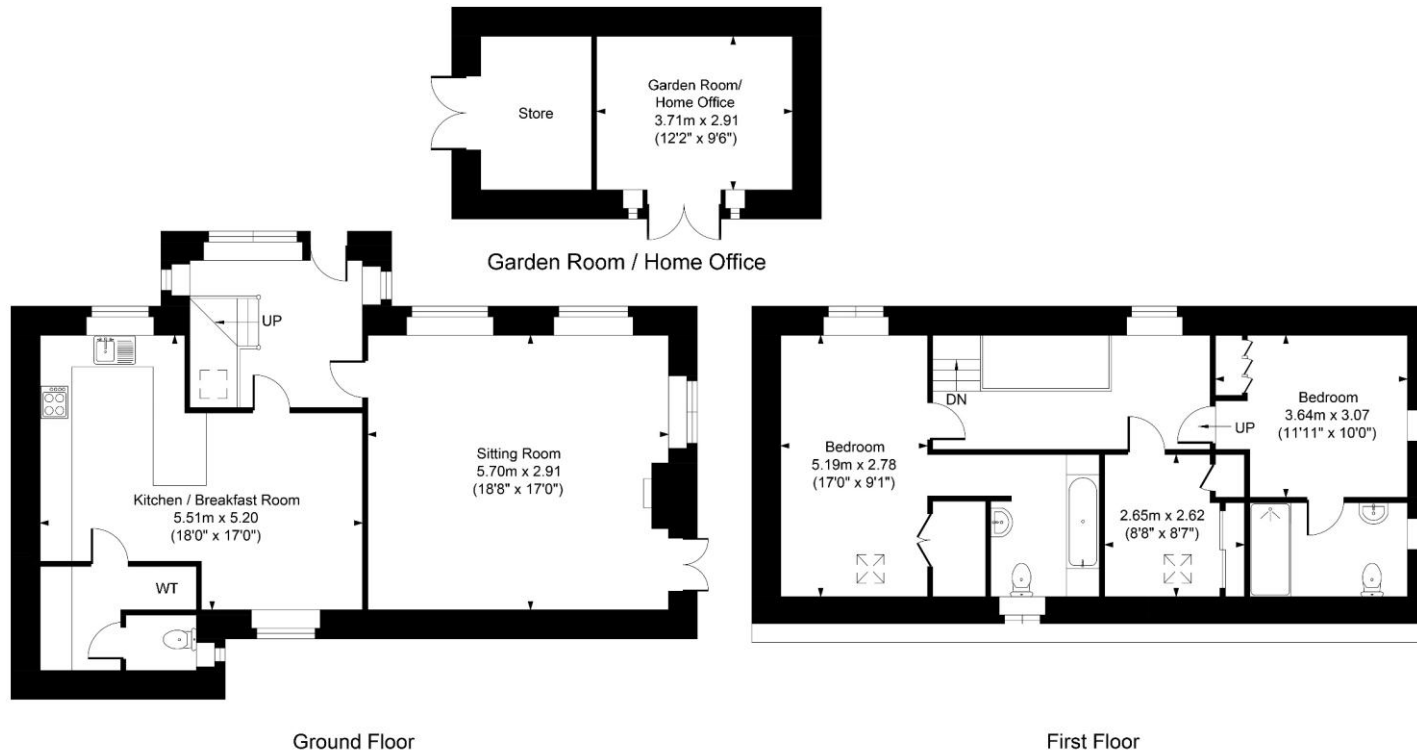


Old Chapel Cottage, Cold Aston, GL54 3BJ

Main House Approx. Gross Area:- 128.8 sq.m. 1386 sq.ft.

Garden Room / Home Office Approx. Gross Area:- 17.2 sq.m. 185 sq.ft.

Total Approx. Gross Area:- 146.0 sq.m. 1571 sq.ft.



FOR ILLUSTRATIVE PURPOSES ONLY-NOT TO SCALE

The position & size of doors, windows, appliances and other features are approximate only.

--- Denotes restricted head height

www.dmlphotography.co.uk

For further information or to arrange a viewing, please contact us on **01608 644 000** or email **info@maxwelldouglasproperty.co.uk**
www.maxwelldouglasproperty.co.uk

DISCLAIMER: MAXWELL DOUGLAS LIMITED

Maxwell Douglas on its behalf and for the Vendors or Lessors of this property, whose Agents they are, give notice that: These particulars are set out as a general outline only for guidance to intending Purchasers or Lessees, and do not constitute any part of an offer or contract. Details given without any responsibility and any intending Purchasers, Lessees or Third Parties should not rely on them as statements or representations of fact, but must satisfy themselves by inspection or otherwise as to the correctness of each of them. No person in the employment of Maxwell Douglas has any authority to make any representation or warranty in relation to this property.

XXXX Printed by Ravensworth 01670 713330

MD
MAXWELL DOUGLAS
CHARTERED SURVEYORS | ESTATE AGENTS



