

103 St. Peters Gardens | £465,000

Wrecclesham | Farnham | Surrey | GU10 4QZ

warren
powell-richards

warren
powell-richards
FOR SALE
FARNHAM 01252 715031
www.wprhomes.co.uk



103 St. Peters Gardens

Wrecclesham, Farnham, Surrey, GU10 4QZ

£465,000 Freehold

- Farnham town centre 1.6 miles
- Farnham mainline train station to Waterloo approx 53 mins
- Guildford 11.7 miles
- A31 0.7 miles
- M3 11.1 miles

An exceptionally well presented, semi detached, family home

- Three bedrooms with built in storage space
- Beautiful open plan kitchen breakfast room
- Large secluded garden
- Driveway parking for two vehicles
- Single garage

DESCRIPTION

Located within the much requested St Peters Gardens development and within catchment for Weydon school, this three bedroom semi detached family home is presented in excellent order throughout. To the rear of the property the beautifully refurbished kitchen breakfast room leads directly onto the garden area which extends to approximately 80 feet in length. Internally the house also includes a spacious lounge, three bedrooms and white bathroom suite. To the front there is parking for 2 cars and single garage. The house would be ideal for a family looking to be well located for Farnham town centre and excellent local schooling.



LOCATION

Set within close proximity to the popular market town of Farnham which offers a range of excellent shops, restaurants, open spaces and local schooling. The property itself is well situated within easy access of all major road routes and mainline station.

DIRECTIONS

From the centre of Farnham, take West Street towards the Coxbridge roundabout. Take the second exit onto the A325, continuing under the railway bridge, until you get to the mini roundabout. Take the first exit onto School Hill where St Peters Gardens can be found on the right hand side, approximately after 200 yards.

COUNCIL TAX

Waverley Borough Council. Council Tax Band D (Correct at time of publication and is subject to change following a council revaluation after a sale)

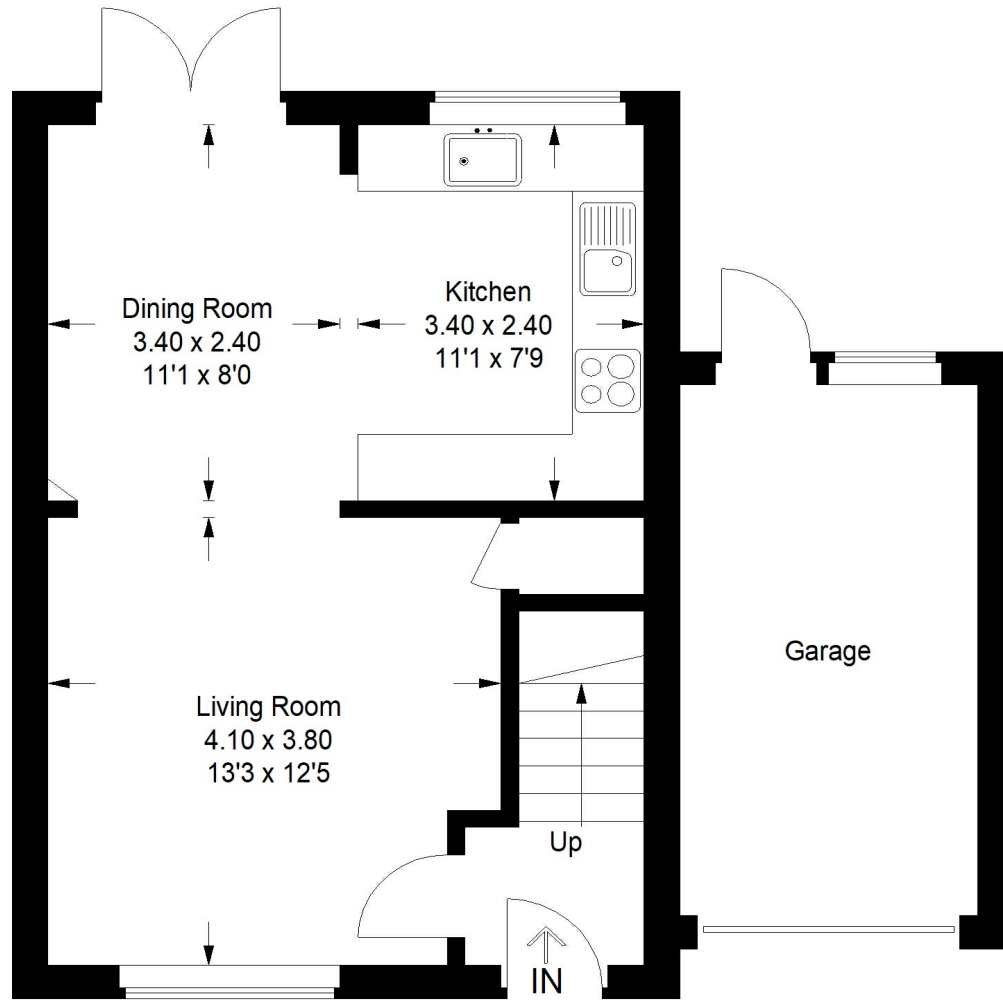
SERVICES

Gas heating and mains Services.

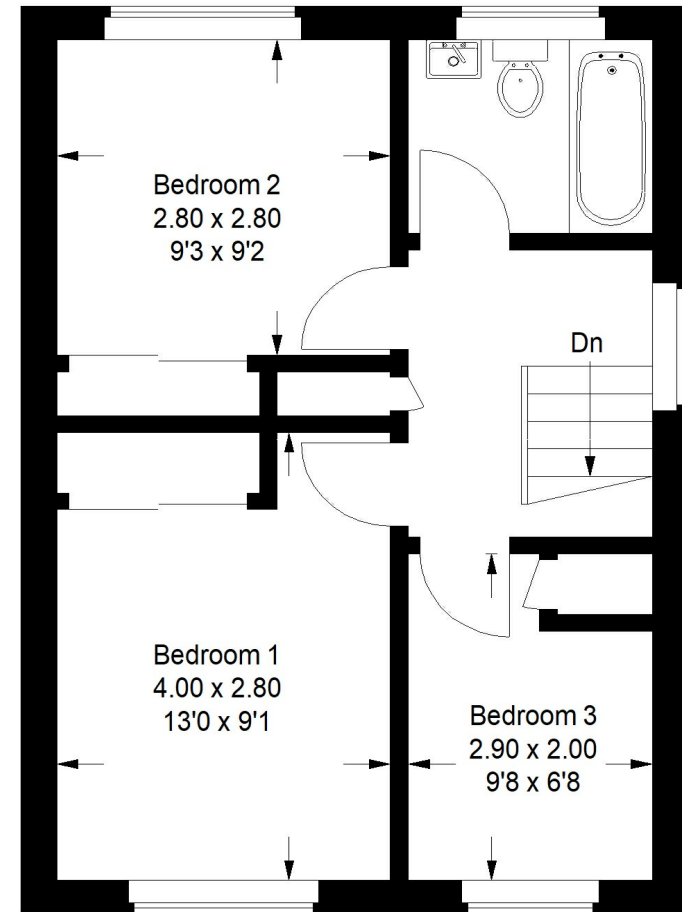


St Peter's Gardens

Approximate Gross Internal Area
 Ground Floor = 48.1 sq m / 518 sq ft
 First Floor = 35.7 sq m / 384 sq ft
 Total = 83.8 sq m / 902 sq ft

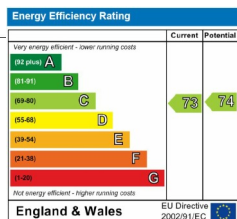


Ground Floor



First Floor

This plan is for representation purposes only. Reproduced from plans supplied by the agents. Not drawn to scale unless stated. Please check all dimensions before making any decisions reliant upon them. No guarantee is given on square footage if quoted. Any figures quoted should not be used as a basis for valuation.



Office Locations: Alton • Farnham • Godalming • Grayshott • Haslemere • London

Property details are a general outline and do not constitute any part of an offer or contract. Services, equipment, fittings or central heating systems have not been tested and no warranty is given or implied that these are in working order. Buyers are advised to obtain verification from their solicitor or surveyor. Fittings and fixtures are not included unless specifically described. Measurements, distances and areas are approximate and for guidance only. This material is protected by laws of copyright. W1110