



andrew nunn
ASSOCIATES

PER MONTH

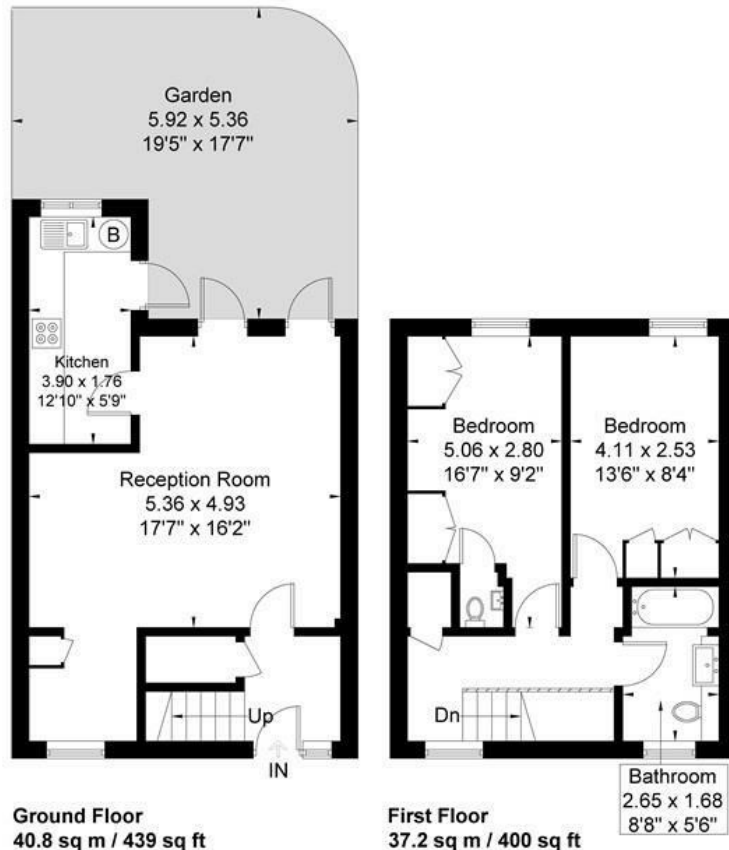
£2,895 Per Month

Winston Walk

Chiswick, W4 5SN

Winston Walk

Approximate Gross Internal Area = 78.0 sq m / 839 sq ft



Although every attempt has been made to ensure accuracy, all measurements are approximate. The floorplan is for illustrative purposes only and not to scale.
© www.perspective.co.uk

2



1

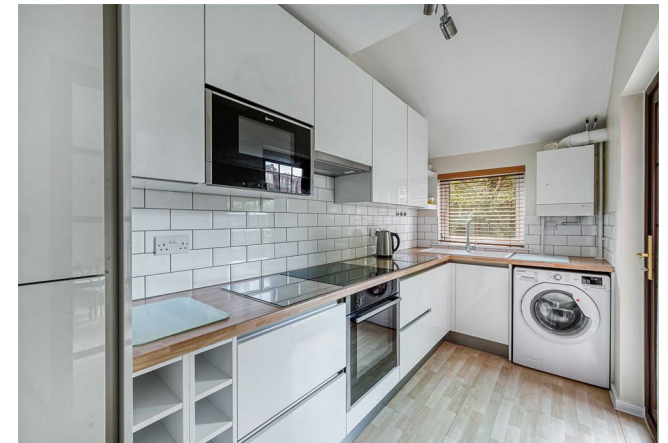


1



Energy Efficiency Rating

	Current	Potential
Very energy efficient - lower running costs		
(92 plus) A		
(81-91) B		
(69-80) C		
(55-68) D		
(39-54) E		
(21-38) F		
(1-20) G		
Not energy efficient - higher running costs		
England & Wales	69	84
	EU Directive 2002/91/EC	



Agents Note: Whilst every care has been taken to prepare these particulars, they are for guidance purposes only. All measurements are approximate and are for general guidance purposes only and whilst every care has been taken to ensure their accuracy, they should not be relied upon and potential buyers/tenants are advised to recheck the measurements

OFFICE ADDRESS

The Clock House
66 South Parade
Chiswick
London

OFFICE DETAILS

020 8995 1600
lettings@andrewnunnassociates.co.uk
andrewnunnassociates.co.uk