



andrew numan  
ASSOCIATES

PER MONTH

**£3,300 Per Month**

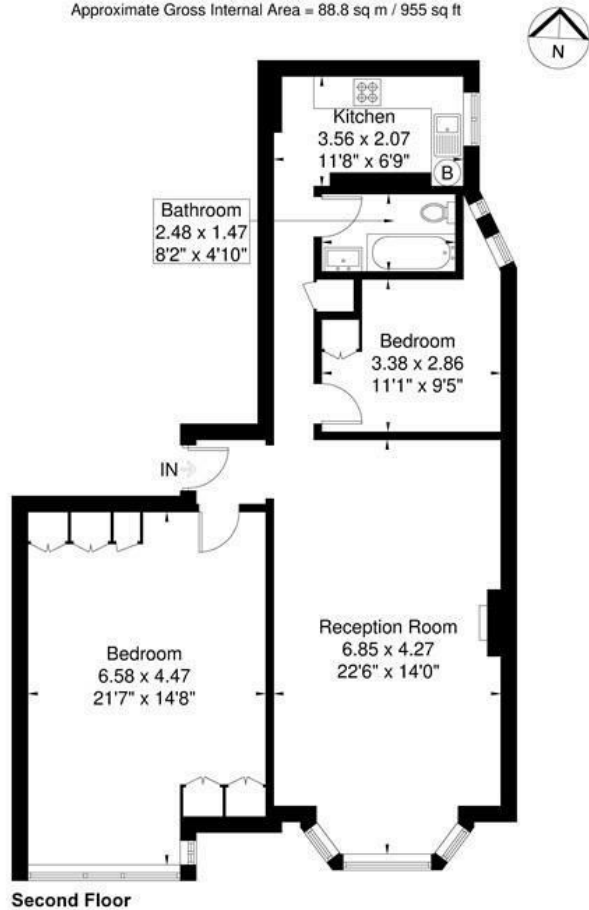
**Esmond Gardens, South Parade**

London, W4 1JT



## Esmond Gardens

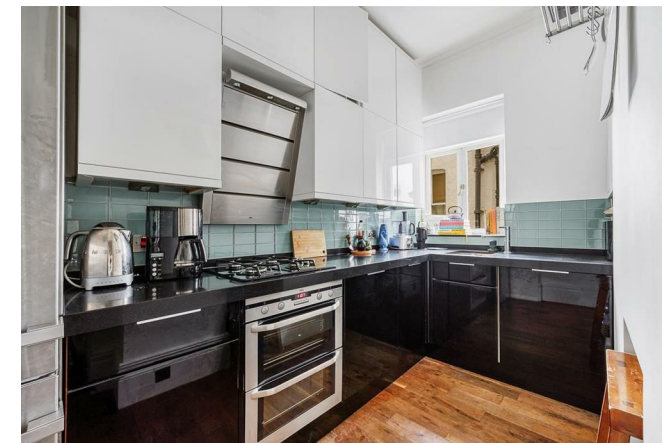
Approximate Gross Internal Area = 88.8 sq m / 955 sq ft



Although every attempt has been made to ensure accuracy, all measurements are approximate.  
The floorplan is for illustrative purposes only and not to scale.  
© www.perspective.co.uk

2  
1  
1

Energy Efficiency Rating		
	Current	Potential
Very energy efficient - lower running costs		
(92 plus) <b>A</b>		
(81-91) <b>B</b>		
(69-80) <b>C</b>		
(55-68) <b>D</b>		
(39-54) <b>E</b>		
(21-38) <b>F</b>		
(1-20) <b>G</b>		
Not energy efficient - higher running costs		
<b>England &amp; Wales</b>	74	82
	EU Directive 2002/91/EC	



Agents Note: Whilst every care has been taken to prepare these particulars, they are for guidance purposes only. All measurements are approximate and are for general guidance purposes only and whilst every care has been taken to ensure their accuracy, they should not be relied upon and potential buyers/tenants are advised to recheck the measurements