



andrew nunn  
ASSOCIATES

£775,000

**Powell Place**

London, W4 2EY



## PROPERTY SUMMARY

A fabulous two bedroom two bathroom split level apartment in this small residential development most conveniently situated just off the Chiswick High Road. The property forms part of this exclusive development of only 10 apartments set behind electric gates in Prince of Wales Terrace. The light and airy accommodation measures at 927 sqft and comprises, on the first floor, front door leading into hallway with stairs to the second floor spacious landing, sitting room with picture window, open plan kitchen with built in appliances, two equally large double bedrooms (one with a large walk in wardrobe) both with en suite bathrooms. The apartment benefits from underfloor heating throughout and has air conditioning to the bedrooms. Ideal pied a terre. Long lease and no onward chain. Prince of Wales Terrace is a discreet road running off Devonshire Road with its boutique shops and restaurants to include the Michelin star "La Trompette" and Napoli on the Road the recent winner of "best pizza in Europe 2024". It is therefore an excellent location being only a few minutes walk of all the facilities and amenities along Chiswick High Road, Turnham Green Terrace and Devonshire Road. Turnham Green tube station (District Line Zone 2) is a five minute walk.

2



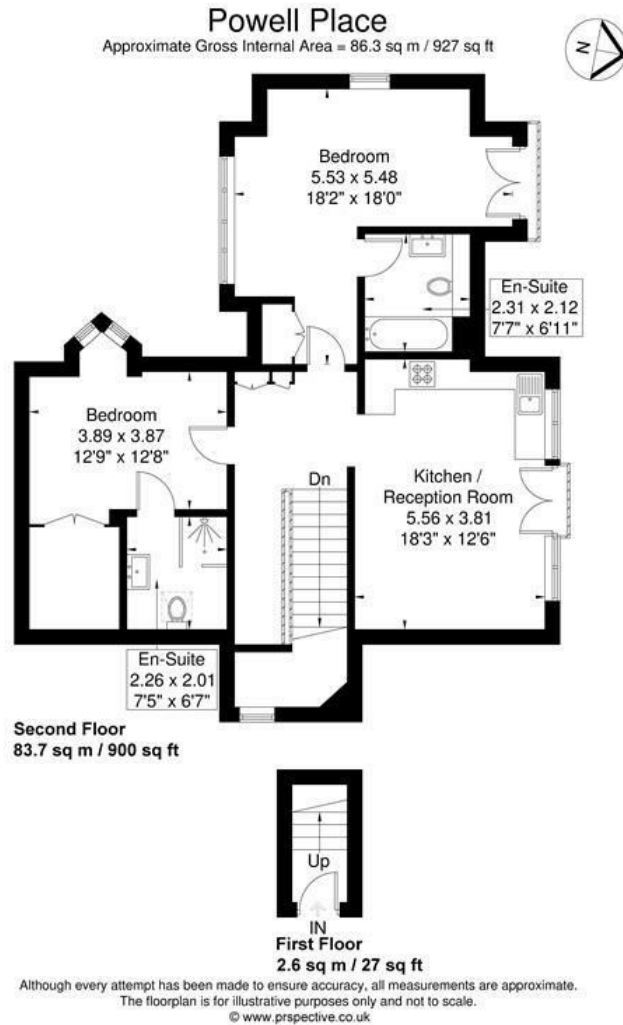
2



1







## LOCAL AUTHORITY

Hounslow

## TENURE

Leasehold

## COUNCIL TAX BAND

E

## VIEWINGS

By prior appointment only

Energy Efficiency Rating		
	Current	Potential
Very energy efficient - lower running costs		
(92 plus) <b>A</b>		
(81-91) <b>B</b>		
(69-80) <b>C</b>	78	78
(55-68) <b>D</b>		
(39-54) <b>E</b>		
(21-38) <b>F</b>		
(1-20) <b>G</b>		
Not energy efficient - higher running costs		
<b>England &amp; Wales</b>	EU Directive 2002/91/EC	

Agents Note: Whilst every care has been taken to prepare these particulars, they are for guidance purposes only. All measurements are approximate and are for general guidance purposes only and whilst every care has been taken to ensure their accuracy, they should not be relied upon and potential buyers/tenants are advised to recheck the measurements

## OFFICE ADDRESS

The Clock House  
66 South Parade  
Chiswick  
London  
W4 5LG

## OFFICE DETAILS

020 8995 1500  
sales@andrewnunnassociates.co.uk  
andrewnunnassociates.co.uk