



andrew nunn  
ASSOCIATES

£459,950

Fauconberg Court

London, W4 3JQ

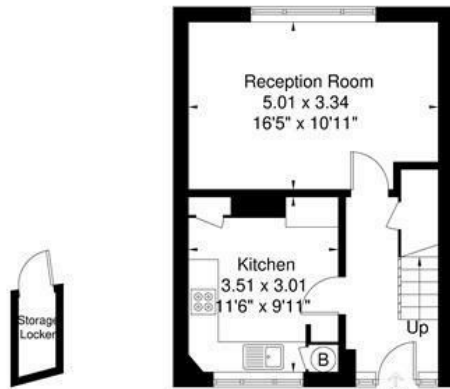


## Fauconberg Court

Approximate Gross Internal Area = 76.3 sq m / 820 sq ft  
 Storage Locker = 1.1 sq m / 11 sq ft  
 Total = 77.4 sq m / 831 sq ft



**First Floor**  
41.3 sq m / 444 sq ft



**Storage Locker** 1.1 sq m / 11 sq ft  
**Ground Floor** 35.0 sq m / 376 sq ft

Although every attempt has been made to ensure accuracy, all measurements are approximate.  
 The floorplan is for illustrative purposes only and not to scale.  
 © www.prspective.co.uk



Energy Efficiency Rating		Current	Potential
Very energy efficient - lower running costs			
(92 plus)	A		
(81-91)	B		
(69-80)	C		
(55-68)	D		
(39-54)	E		
(21-38)	F		
(1-20)	G		
Not energy efficient - higher running costs			
<b>England &amp; Wales</b>		74	79
		EU Directive 2002/91/EC	

Agents Note: Whilst every care has been taken to prepare these particulars, they are for guidance purposes only. All measurements are approximate and are for general guidance purposes only and whilst every care has been taken to ensure their accuracy, they should not be relied upon and potential buyers/tenants are advised to recheck the measurements



**OFFICE ADDRESS**  
 The Clock House  
 66 South Parade  
 Chiswick  
 London  
 W4 5LG

**OFFICE DETAILS**  
 020 8995 1500  
 sales@andrewnunnassociates.co.uk