



andrew nunn  
ASSOCIATES



PER MONTH

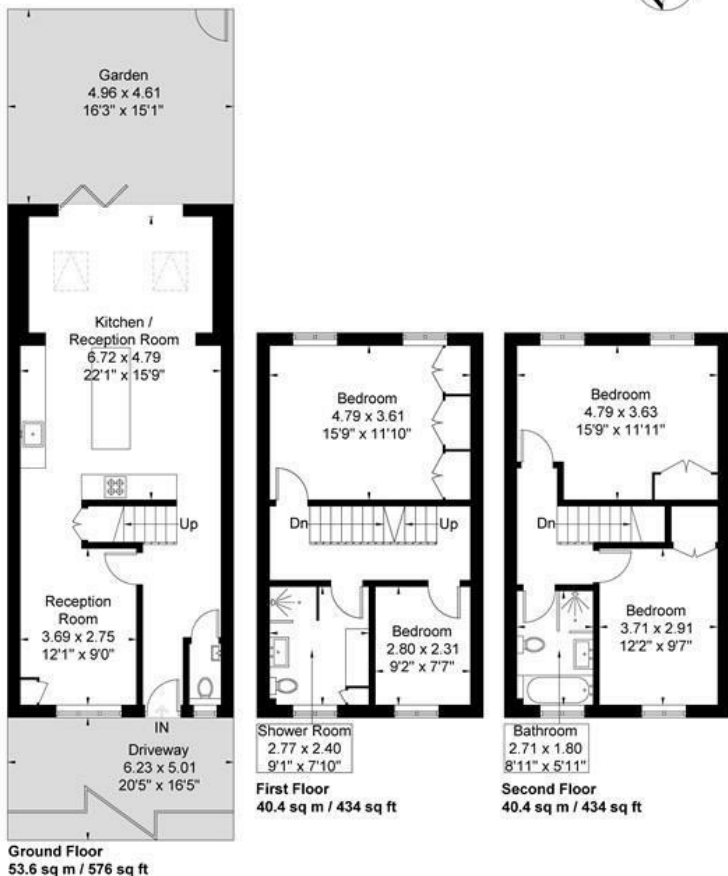
**£4,000 Per Month**

**Wilkinson Way**

Chiswick, W4 5XB

# Wilkinson Way

Approximate Gross Internal Area = 134.4 sq m / 1444 sq ft.



Although every attempt has been made to ensure accuracy, all measurements are approximate. The floorplan is for illustrative purposes only and not to scale.  
© www.perspective.co.uk



Energy Efficiency Rating		Current	Potential
Very energy efficient - lower running costs			
(92 plus)	A		
(81-91)	B		
(69-80)	C		
(55-68)	D		
(39-54)	E		
(21-38)	F		
(1-20)	G		
Not energy efficient - higher running costs			
England & Wales		77	86
		EU Directive 2002/91/EC	

Agents Note: Whilst every care has been taken to prepare these particulars, they are for guidance purposes only. All measurements are approximate and are for general guidance purposes only and whilst every care has been taken to ensure their accuracy, they should not be relied upon and potential buyers/tenants are advised to recheck the measurements



**OFFICE ADDRESS**  
The Clock House  
66 South Parade  
Chiswick  
London

**OFFICE DETAILS**  
020 8995 1600  
lettings@andrewnunnassociates.co.uk