



Eaves Lane, Bucknall

Stoke-On-Trent, Staffordshire, ST2 8JY

£254,950



NEW BUILD - This amazing four bedroom detached home is everything you've been hoping to find! We are certain this will make the perfect family home with such an inviting layout! Located on the sought after Bucknall Grange development which offers easy access to Hanley town centre & Staffordshire Moorlands. Internally the accommodation briefly comprises; Entrance hallway, downstairs WC, lounge, dining room, fitted kitchen, landing, four bedrooms, bathroom, en-suite & garage.

Hallway

Lounge

15'6" x 11'5" (4.72m x 3.48m)



Dining Room

9'3" x 8'7" (2.82m x 2.62m)

Fitted Kitchen

13'11" x 9'6" (4.24m x 2.90m)



Downstairs WC

4'8" x 3'3" (1.42m x 0.99m)

Landing

Master Bedroom

13'11" x 12'0" (4.24m x 3.66m)



En-Suite

7'10" x 4'11" (2.39m x 1.50m)



Bedroom Two

13'11" x 8'11" (4.24m x 2.72m)



Bedroom Three

12'0" x 9'3" (3.66m x 2.82m)



Front



Bedroom Four

11'4" x 7'4" (3.45m x 2.24m)



Rear

Images

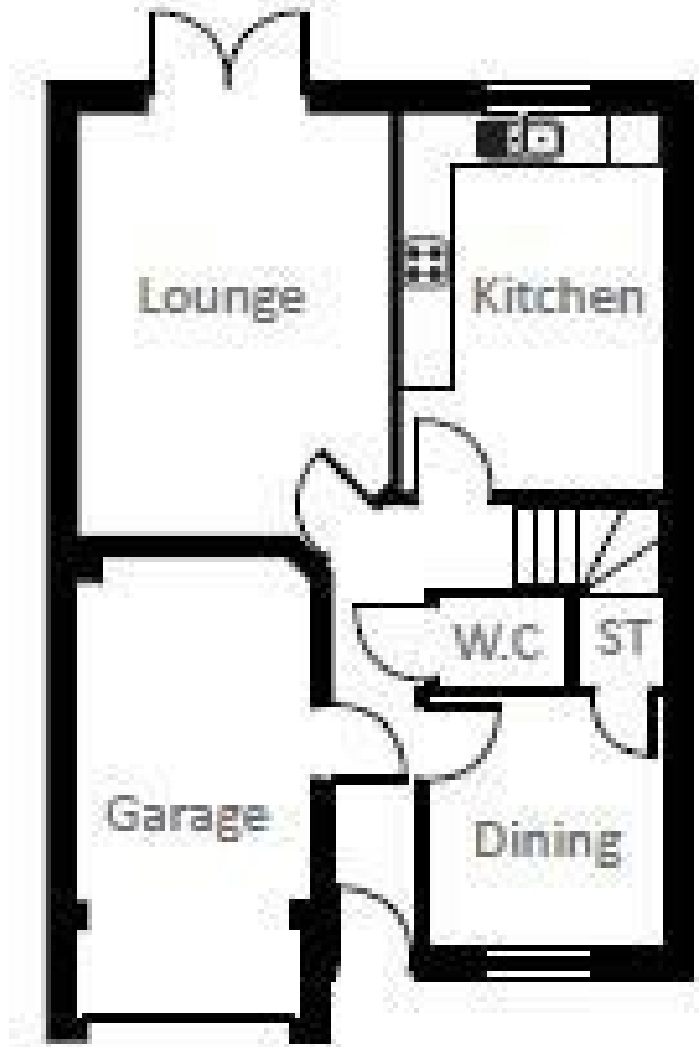
Please note these pictures are of the 'Rowingham' show home which includes extras. Please speak to the adviser to confirm what is included with the property for sale.

Bathroom

7'10" x 6'8" (2.39m x 2.03m)



Garage



t: 01782206713 e: r.norton@goodchilds-uk.com

www.goodchilds-uk.com