



Trentham Manor, Trentham

Stoke-On-Trent, Staffordshire, ST4 8GA

£243,500



An ideal starter home or perfect for small families in our opinion. It is all about open-plan living in this three-bedroom Houghton. If its light and space you are after then look no further. The kitchen-diner offers ample space for all of the household, while the master bedroom features an en-suite and fitted wardrobe – perfect for your hideaway haven. The property in brief comprises; Entrance Hallway, Downstairs WC, Lounge, Open Plan Kitchen Diner, Utility Room, Landing, Three Bedrooms, En-Suite & Family Bathroom.

Hallway

Having radiator and door to front.

Lounge

16 x 12'10 (4.88m x 3.91m)



Having storage cupboard, radiator and double glazed bay window to front.

Open Plan Kitchen Diner

15'7 x 11'3 (4.75m x 3.43m)



Having a range of wall and base units with preparation work surfaces over incorporating 1.5 sink drainer. Integrated oven with gas hobs and extractor over, space for fridge freezer, radiator and French doors to rear.

Utility Room

6 x 5'3 (1.83m x 1.60m)

Having plumbing for automatic washing machine and door to side.

Downstairs WC

6 x 4'2 (1.83m x 1.27m)



Having WC, wash hand basin, radiator and double glazed window to side.

Landing

Having radiator.

Bedroom One

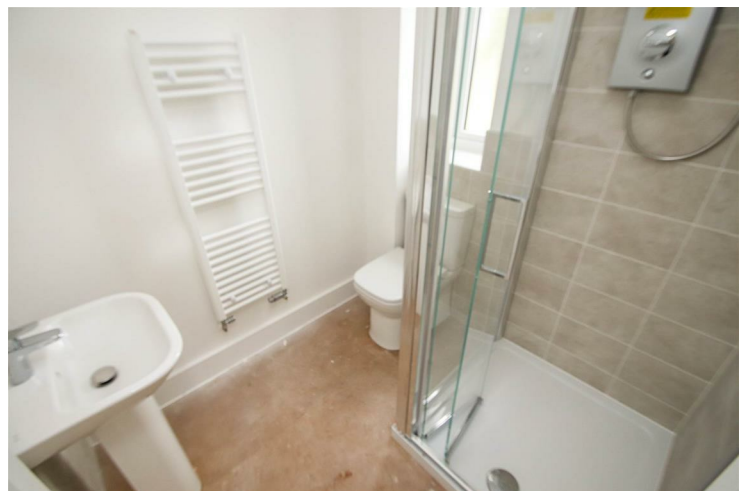
10'6 x 9'5 (3.20m x 2.87m)



Having built in wardrobe, storage cupboard, radiator and double glazed window to front.

En-Suite

6'2 x 6 (1.88m x 1.83m)



Having three piece suite comprising; shower cubicle, WC and wash hand basin. Extractor fan, radiator and double glazed window to front.

Bedroom Two

10'3 x 9 (3.12m x 2.74m)



Please note this images are of a typical 'Houghton' house type and may differ slightly to the plots on offer. Please ask for more details,

Having radiator and double glazed window to rear.

Bedroom Three

11'3 x 6'4 (3.43m x 1.93m)

Having radiator and double glazed window to rear.

Bathroom

6'2 x 5'6 (1.88m x 1.68m)

Having white three piece suite comprising; panel bath with shower off taps, WC and wash hand basin. Part tiled walls, radiator, extractor fan and double glazed window to side.

Front

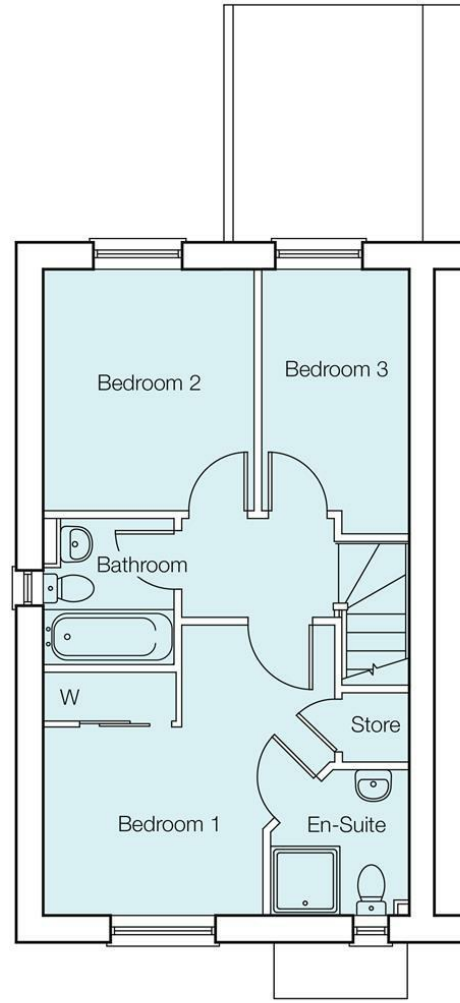
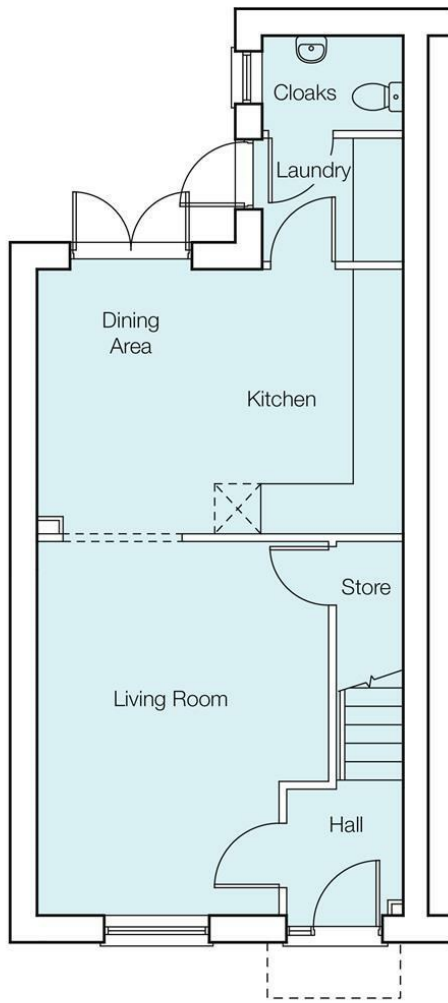


Having off road parking for two vehicles.

Rear



Disclaimer



t: 01782206713 e: r.norton@goodchilds-uk.com

www.goodchilds-uk.com