

Queen Insurance Buildings Liverpool



An attractive set of grade II listed buildings, offering high quality office space at the heart of Liverpool's traditional business quarter.



Queen Insurance buildings were originally built for the Royal Bank in 1870. Today they form one of Liverpool's finest Victorian avenues and occupy a prime business location on the corner of Dale Street and Castle Street.

Queens Insurance Buildings are surrounded by a selection of amenities including bars, restaurants and coffee shops, meaning you'll never have to travel too far for a sandwich at lunch. Moorfields and Liverpool Lime street train stations are also just a 5 minute walk away.

A selection of high specification offices are available from 250 to 3000 ft² and everything in-between. With the help of our project management team we can design an office that's bespoke to your business and makes the most of the space available. You'll also have the flexibility that should your business needs change, then you can up or downsize to one of our 90 buildings, located throughout Manchester, Leeds, Liverpool or Birmingham, within the terms of your one lease.

At Bruntwood, everything we do is centred on you, the customer. That's why like most Bruntwood buildings, Queens is managed by an on-site customer service team dedicated to delivering world class service to you and your visitors. The team are always on hand to answer any queries and look after the maintenance and smooth running of the building 24/7.

If you'd like to find out more about Queen Insurance Buildings then please don't hesitate to call, we'd love to show you around.

Jane Yates
General Manager
Queens Insurance Buildings



Office space
available from:

250 ft²

Storage space
available from:


100 ft²

A customer at Queen Insurance Buildings says...

"I've always found the team at Bruntwood and Queen Insurance Buildings in particular to be extremely helpful, accommodating and generous with their time and expertise. From the day we moved in we were made to feel welcome and valued."

Lucy Byrne - Director - Dot-art

For more information please call us on 0151 600 5353
or visit www.bruntwood.co.uk/queens

 There for you

LOCATION

At Queen Insurance Buildings you're surrounded by an excellent range of cafes, bars, restaurants and sandwich shops and the city's huge retail offering is just on your doorstep.

AMENITIES

- 1 The Olive Press: Restaurant
- 2 Slug and Lettuce: Bar
- 3 Rigby's: Bar
- 4 Toffs: Café
- 5 O'Brien's: Sandwich Bar
- 6 Café Nero: Coffee Shop
- 7 Lifestyles Millennium: Gym
- 8 Thistle Liverpool: Hotel
- 9 Sainsbury's Local: Supermarket
- 10 Johnsons Dry Cleaners

Please visit:
bruntwood.co.uk/queens
 for further info on local amenities.

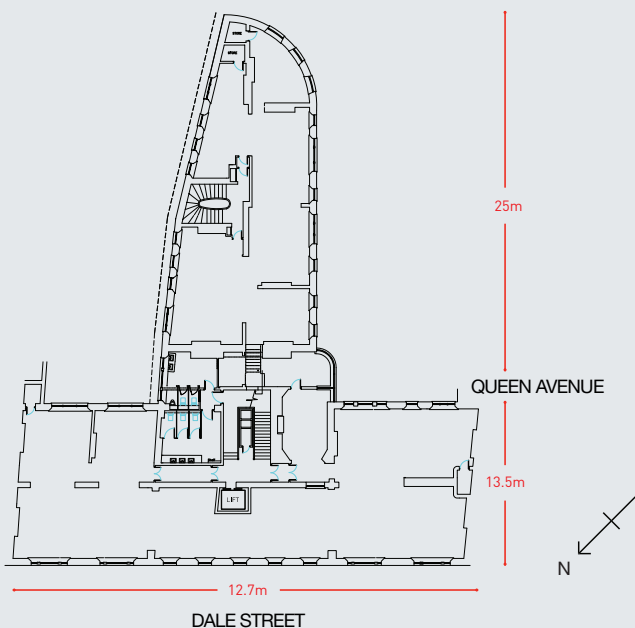


QUEEN INSURANCE BUILDINGS



FLOOR PLAN

Here is a typical floor plan from Queen Insurance Buildings. Depending on your needs the space in these buildings can be split into smaller suites or converted into an open plan office. Just let us know what you need and we can make it happen.



TECHNICAL SPECIFICATION

Here is a summary of the current specification at Queen Insurance Buildings, but please bear in mind we can bespoke any space for our customers. So if it's not on the list and you need it – just ask.

- Recently refurbished
- 24 hour access
- On-site customer service team
- LG3 lighting
- Disabled access
- Listed building
- Lifts
- On-site shop / café