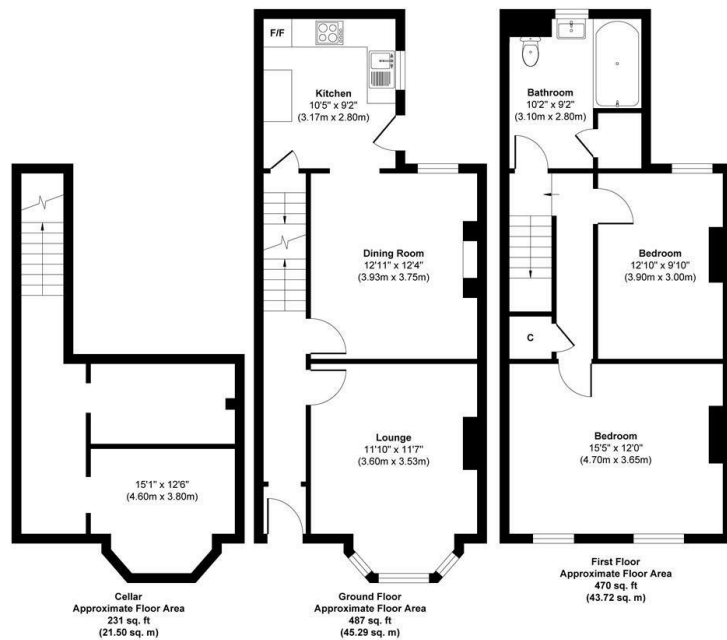




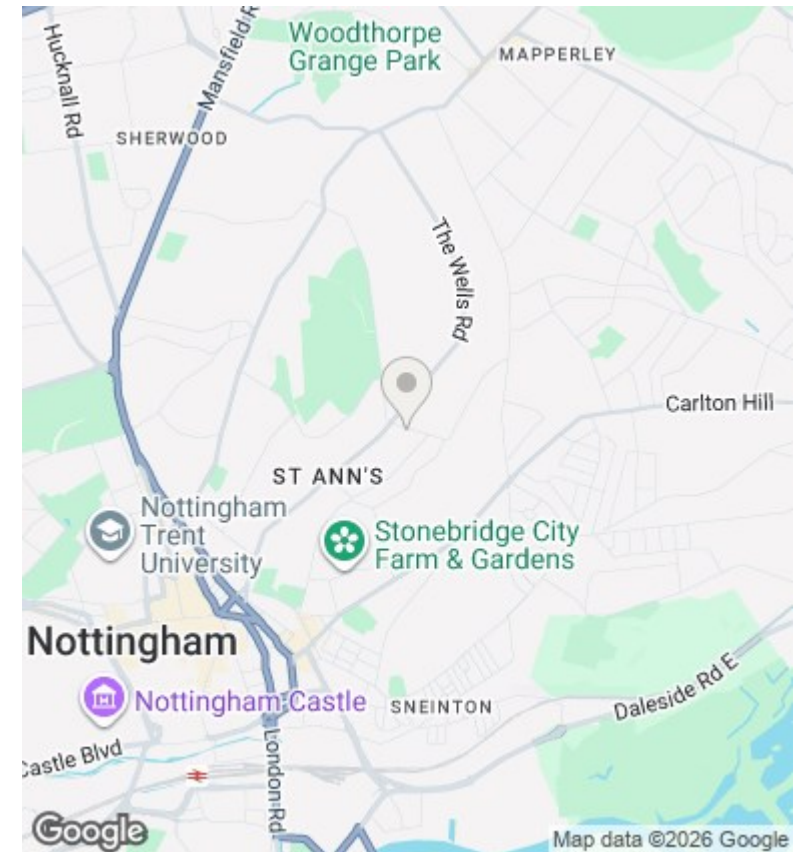
15 Ball Street, Nottingham, NG3 3AX

£995 Per Month

- Substantial Two Bedroom Semi Detached House
- Two Double Bedrooms
- Spacious Rear Garden
- Lounge and Dining Room
- Large First Floor Bathroom
- Unfurnished
- Modern Kitchen
- Large Plot with Driveway
- Available End of February



Approx. Gross Internal Floor Area 1188 sq. ft / 110.51 sq. m
 Illustration for identification purposes only, measurements are approximate, not to scale.



Directions

Viewings

Viewings by arrangement only. Call 01159625003 to make an appointment.

Council Tax Band

B

EPC Rating:

E

| Energy Efficiency Rating | | |
|---|-----------|-------------------------|
| | Current | Potential |
| Very energy efficient - lower running costs | | |
| (92-plus) A | | |
| (81-91) B | | 85 |
| (69-80) C | | |
| (55-68) D | | |
| (39-54) E | 48 | |
| (21-38) F | | |
| (1-20) G | | |
| Not energy efficient - higher running costs | | |
| England & Wales | | EU Directive 2002/91/EC |