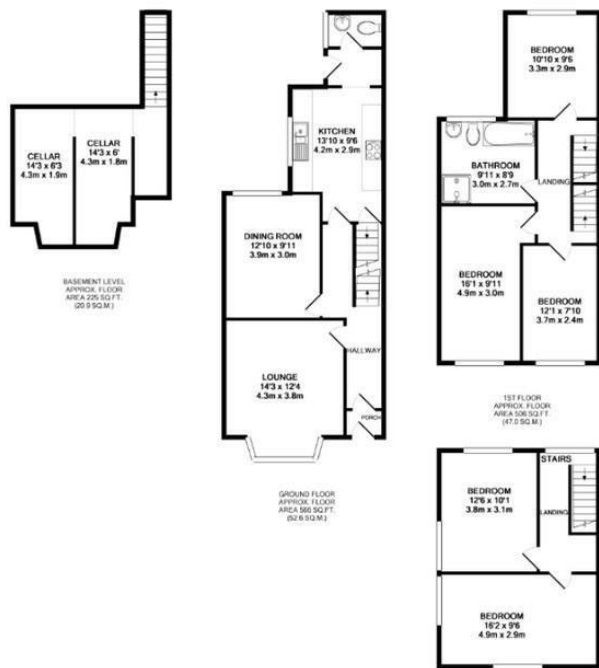




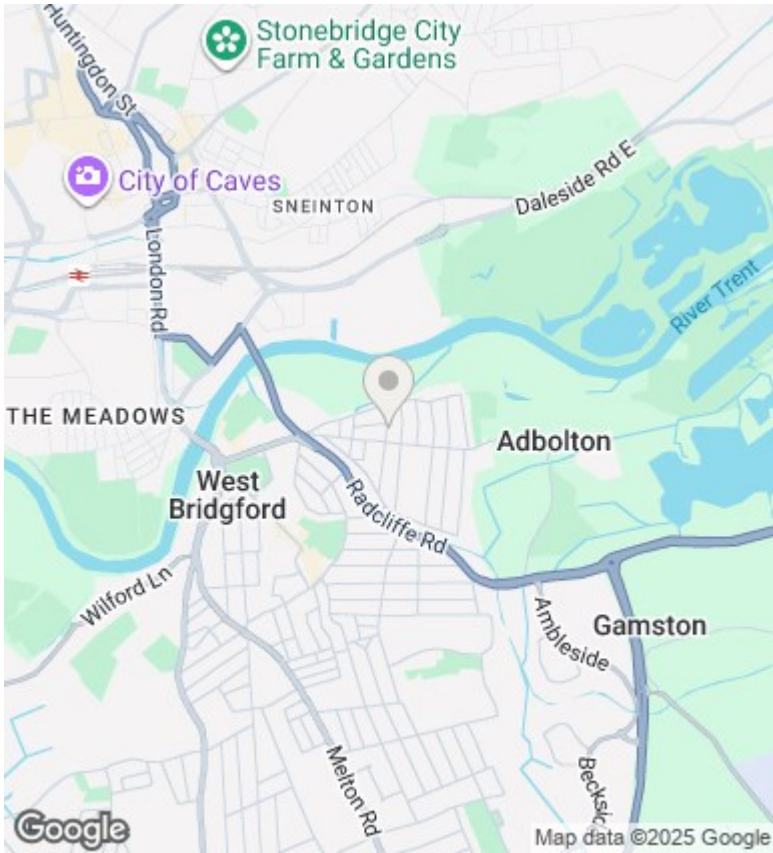
29 Lady Bay Road, West Bridgford, Nottingham, NG2 5BJ

£1,650 Per Month

- Five Bedroom Semi Detached House
- Downstairs W.C
- Furnished
- Lounge and Dining Room
- Five Double Bedrooms
- Available Now
- Spacious Kitchen
- Large Bath/Shower Room



29 LADY BAY ROAD, WEST BRIDGFORD
 TOTAL APPROX. FLOOR AREA 1622 SQ FT (151.5 SQ M.)
While every effort has been made to ensure the accuracy of the floor plan contained herein, measurements of doors, windows, rooms and any other items are approximate and no responsibility is taken for any errors, omissions or misstatements. This plan is for guidance purposes only and should be used as such for any proposed purchase. The services, contents and condition shown have not been tested and no guarantee as to their accuracy or efficiency can be given.
 ©2018 dmwps



Directions

Viewings

Viewings by arrangement only. Call 01159625003 to make an appointment.

Council Tax Band

EPC Rating:

Energy Efficiency Rating		
	Current	Potential
<i>Very energy efficient - lower running costs</i>		
(92 plus) A		
(81-91) B		
(69-80) C		
(55-68) D		
(39-54) E		
(21-38) F		
(1-20) G		
<i>Not energy efficient - higher running costs</i>		
England & Wales	EU Directive 2002/91/EC	