



The Haven Hardwick Wood, Hardwick Wood, Wingerworth, S42 6RJ

Asking Price £1,400,000

- Substantial Four Bedroom Detached House with Self Contained Apartment
- Great Equestrian Property
- Triple Garage
- No Upward Chain
- Situated on an Extensive Plot
- Stables and Tack Room
- Mature Gardens to the front and rear

The Haven Hardwick Wood, Wingerworth S42 6RJ

Impressive Four Bedroom Detached Residence with One Bedroom Self Contained Apartment. Ideal Equestrian Property. Triple Garage. Stables and Tack Room. Substantial Reception Rooms. Situated on a Extensive Plot with gated driveway and mature gardens to the front and rear. No Upward Chain.



Council Tax Band:



Main Entrance Hall
21'0 x 7'3

Lounge
21'0 x 10'10
Door to inner lobby.

Lobby
With stairs to the self contained apartment.

Reception Room
34'9 x 16'7

Snug
10'10 x 7'3

Kitchen/Diner
19'9 x 13'1
Door to rear porch. Window to the front and side elevations.

Rear Lobby
Housing oil fired heating systems. Doors to the W.C and Dining Room.

W.C

Dining Room
22'0 x 16'5
Windows to the three sides.

First Floor Landing
Doors to three bedrooms and the shower room.
Double doors into the study.

Bedroom
13'0 x 10'10

Ensuite
10'10 x 6'7

Bedroom
10'10 x 9'5

Bedroom
10'10 x 10'10
Windows to the front elevation. Built in wardrobes.

Shower Room
6'11 x 6'7
Window to the rear.

Study
9'10 x 6'11
Double doors to Master Suite.

Bedroom
22'0 x 16'5
Windows to the rear and side elevations.

Ensuite
16'5 x 13'1
Windows to the front.

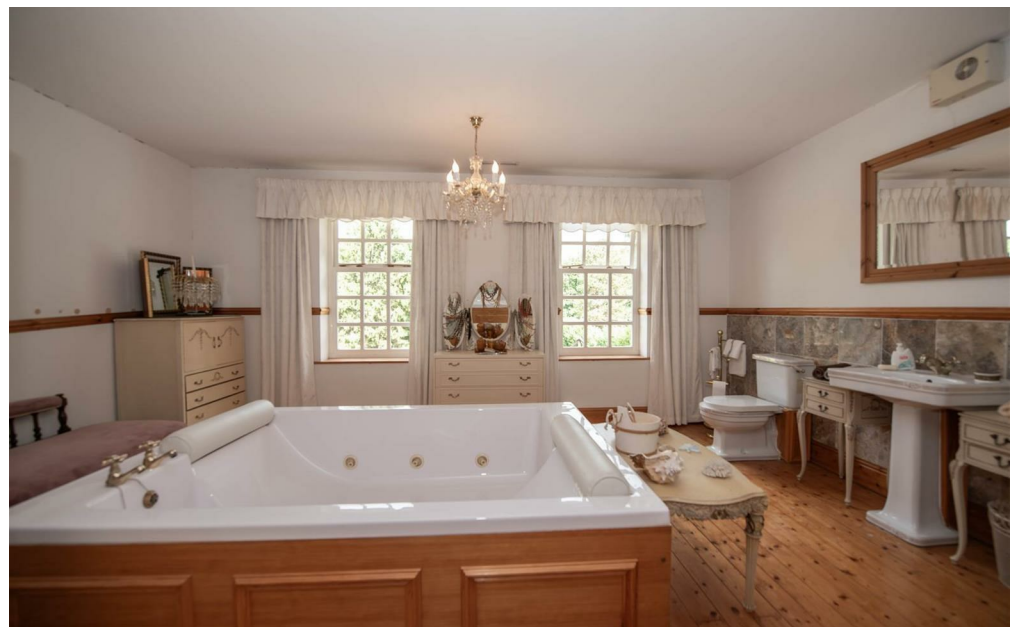
Apartment - Landing
Doors to the Bedroom, Bathroom and Kitchen.

Bedroom
12'10 x 9'2

Kitchen
11'8 x 10'2

Lounge
16'5 x 13'1

Bathroom







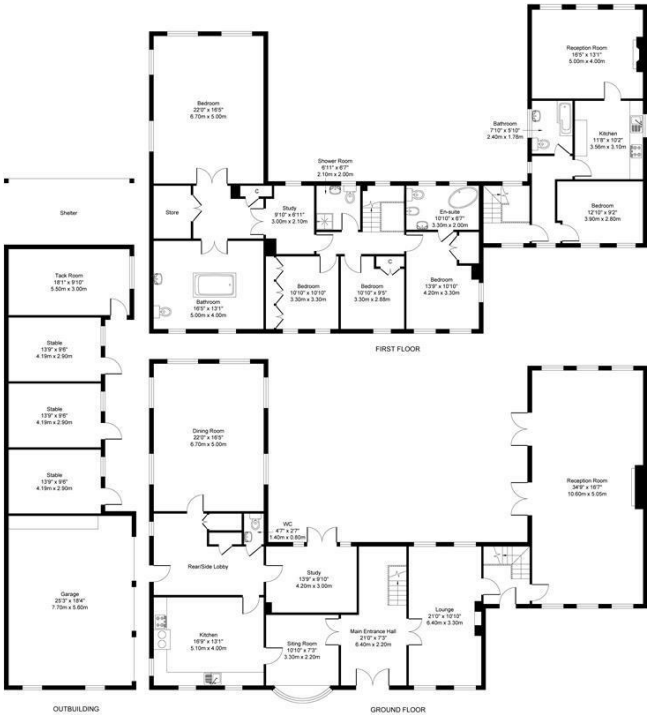
Viewings

Viewings by arrangement only. Call 01159625003 to make an appointment.

EPC Rating:

Energy Efficiency Rating		
	Current	Potential
Very energy efficient - lower running costs		
(92 plus) A		
(81-91) B		
(69-80) C		
(55-68) D		
(39-54) E		
(21-38) F		
(1-20) G		
Not energy efficient - higher running costs		
England & Wales	EU Directive 2002/91/EC	

The Haven
Approximate Gross Internal Area
House - 4153 Sq.ft. (385.83 sq.m.)
Outbuilding - 1052 Sq.ft. (97.74 sq.m.)
Total - 5205 Sq.ft. (483.57 sq.m.)



Produced By Picpreview.co.uk Ltd.