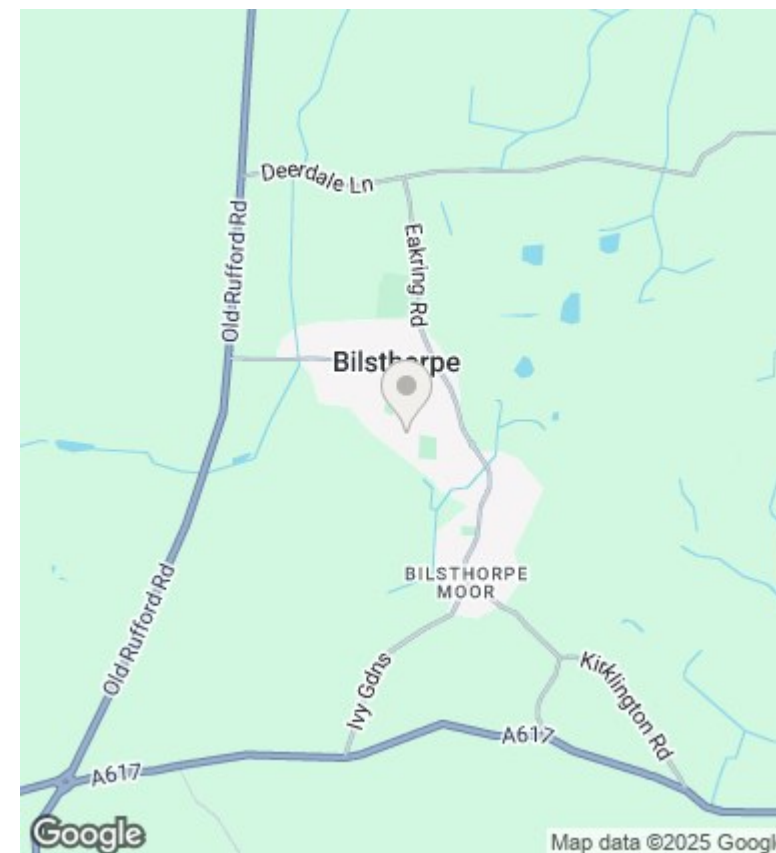
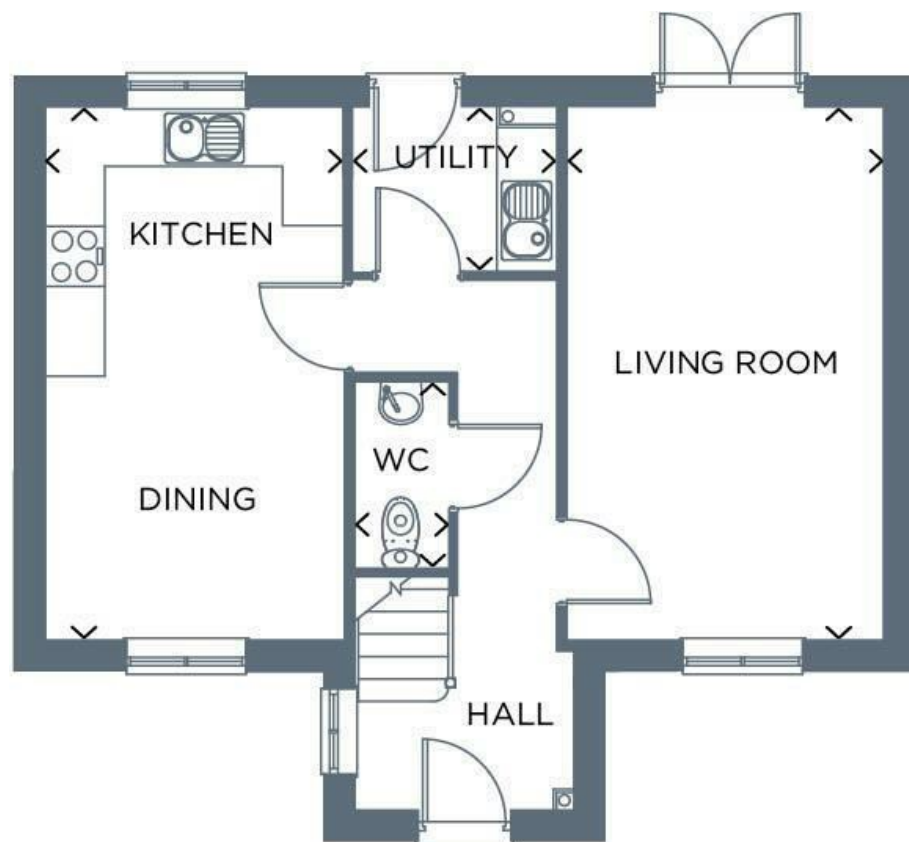




11 Bill Lane, Bilsthorpe, NG22 8GE

£1,250 Per Month

- Nearly New Four Bedroom Detached House
- Lounge and Kitchen/Diner
- Family Bathroom
- Driveway and Garage
- Utility Room and Downstairs W.C
- Front and Rear Gardens
- Spacious Throughout
- Master Bedroom with Ensuite
- Available End of July



Directions

Viewings

Viewings by arrangement only. Call 01159625003 to make an appointment.

Council Tax Band

A

EPC Rating:

B

Energy Efficiency Rating		
	Current	Potential
Very energy efficient - lower running costs		
(92 plus) A		94
(81-91) B	84	
(69-80) C		
(55-68) D		
(39-54) E		
(21-38) F		
(1-20) G		
Not energy efficient - higher running costs		
England & Wales	EU Directive 2002/91/EC	