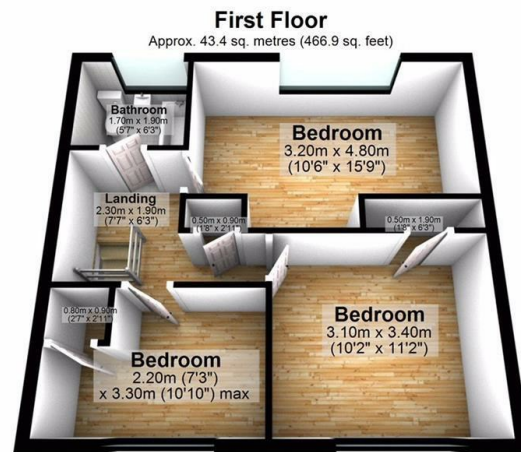
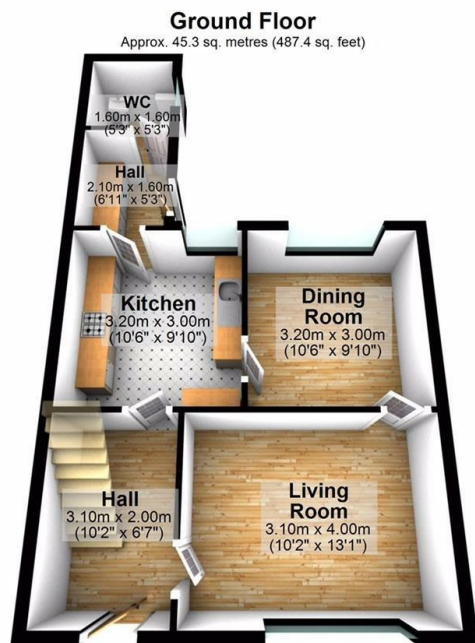




## 208 Rivergreen, Clifton, Nottingham, NG11 8AU

**£1,100 PCM**

- Family Home
- Utility Room and Downstairs W.C
- Gas Boiler
- Available June 2025.
- Spacious Three Bedroom Mid Terrace
- Three Good Size Double Bedrooms
- Driveway and Large Rear Garden
- Lounge and Dining Room
- Modern Kitchen and Bathroom
- Unfurnished



Total area: approx. 88.7 sq. metres (954.3 sq. feet)  
**208 RIVERGREEN, NOTTINGHAM**



## Directions

## Viewings

Viewings by arrangement only. Call 01159625003 to make an appointment.

## Council Tax Band

## EPC Rating:

Energy Efficiency Rating		
	Current	Potential
Very energy efficient - lower running costs		
(92 plus) <b>A</b>		
(81-91) <b>B</b>		
(69-80) <b>C</b>		
(55-68) <b>D</b>		
(39-54) <b>E</b>		
(21-38) <b>F</b>		
(1-20) <b>G</b>		
Not energy efficient - higher running costs		
<b>England &amp; Wales</b>	EU Directive 2002/91/EC	