



26 Bennett Street, Nottingham, NG3 5GP

Price Guide £200,000

- Substantial Three Storey End Terrace
- Extended to the Rear
- First Floor Bathroom
- GUIDE PRICE £200,000 - £220,000
- Three Double Bedrooms
- Dining Room, Lounge and Kitchen/Diner
- Spacious Rear Garden

26 Bennett Street, Nottingham NG3 5GP

GUIDE PRICE £200,000 - £220,000 - Substantial Three Storey, Three Bedroom End Terrace House. Accommodation comprises; Dining Room, Lounge, Kitchen/Diner, Three Double Bedrooms and a modern first floor Bathroom. Spacious Rear Garden. Extended to the Rear.



Council Tax Band: A



Dining Room

14'3 into bay x 11'9

Wood effect floor. Entered via a double glazed front porch. Cast iron fireplace. Radiator. Door to the Lounge.

Lounge

11'8 x 15'19

Wood effect flooring. Opens into the Kitchen/Diner. Understairs cupboard. Stairs to the first floor landing. Vertical radiator.

Kitchen/Diner

10'4 x 14'9

Wood effect flooring. A range of modern base and wall units with integrated dishwasher, electric double oven, fridge/freezer and extractor. Gas hob. French doors to the rear. Two roof windows. Radiator. Plumbing for washing machine.

First Floor

Doors to two bedrooms and the bathroom.

Bedroom

11'9 x 12'2

Window to the front elevation. Radiator.

Bedroom

9'8 x 8'6

Window to the rear. Radiator.

Bathroom

Panelled bath with mains mixer shower over. Vanity unit with inset sink. Low level flush toilet. Extractor. Wall mounted gas combination boiler.

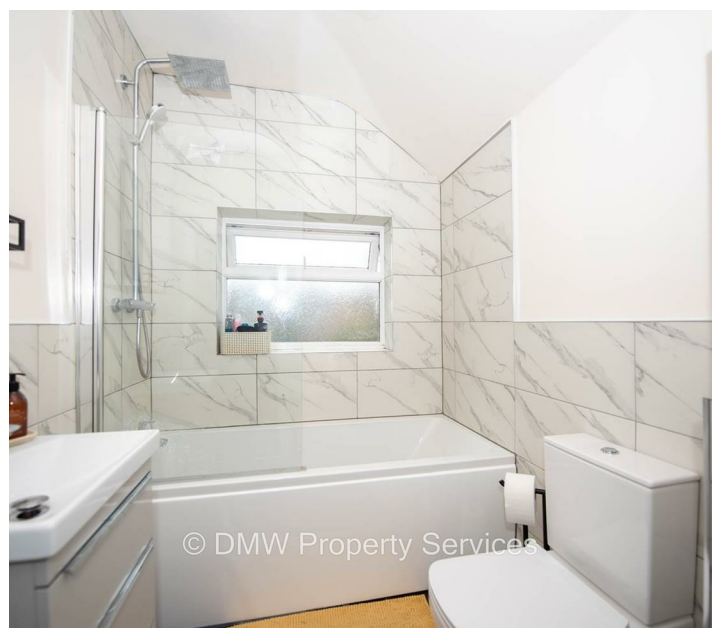
Second Floor Master Bedroom

22'12 x 11'8

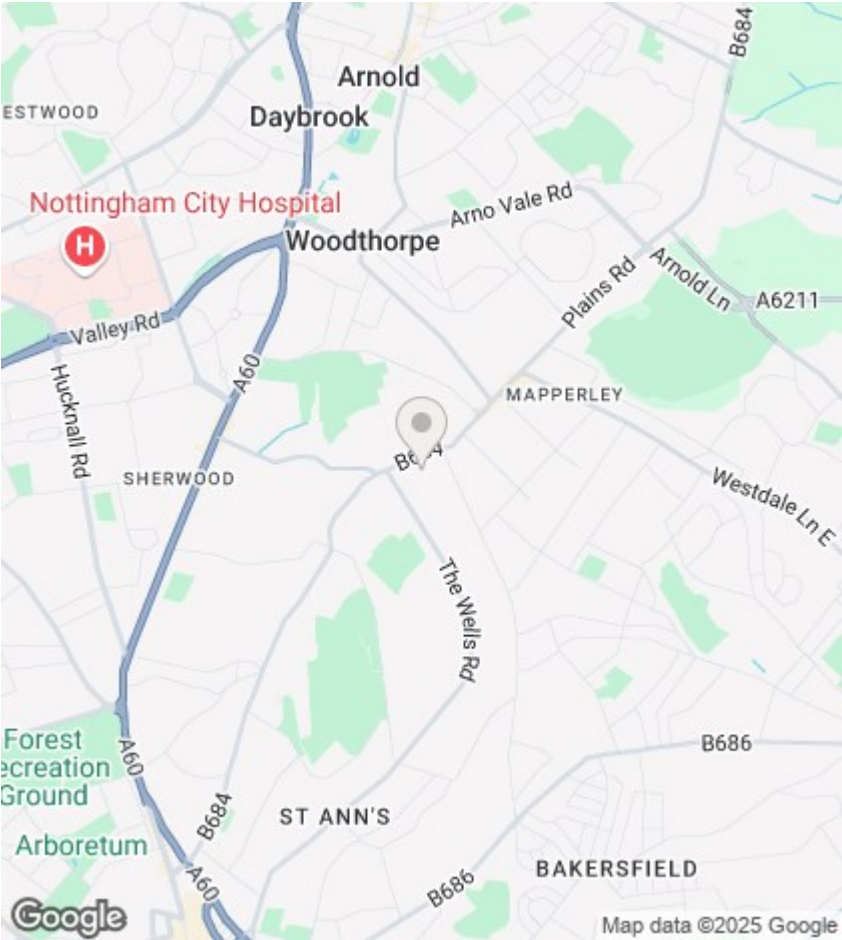
Two roof windows to the front and a dormer window to the rear elevation. Vaulted ceilings. Radiator. Eave storage.

Exterior

Good sized lawned garden.







Viewings

Viewings by arrangement only. Call 01159625003 to make an appointment.

EPC Rating:
D

Energy Efficiency Rating		
	Current	Potential
Very energy efficient - lower running costs		
(92 plus) A		84
(81-91) B		
(69-80) C		57
(55-68) D		
(39-54) E		
(21-38) F		
(1-20) G		
Not energy efficient - higher running costs		
England & Wales		EU Directive 2002/91/EC

